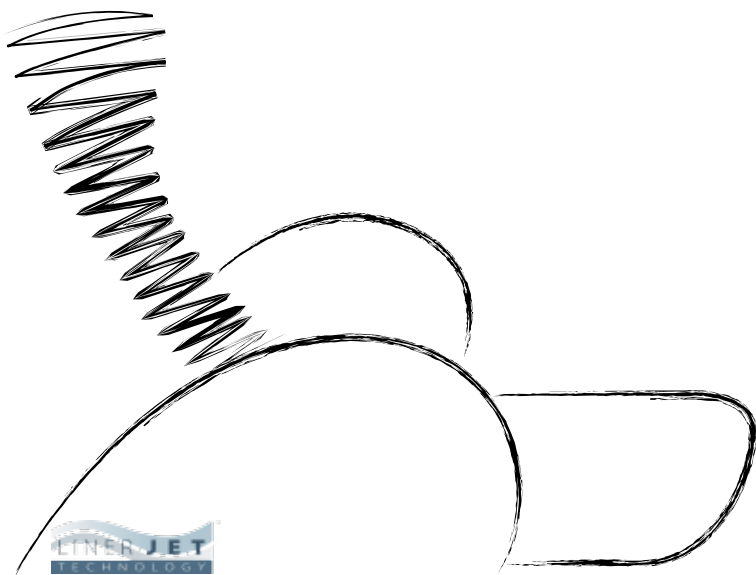


Use & Care Manual



ANS

PEDISPA





safety

IMPORTANT SAFETY INSTRUCTIONS.

Read all instructions before using this pedicure. Please keep this manual in a safe place.

DANGER: Risk of Electric Shock. Connect only to a circuit protected by a ground fault circuit interrupter

GROUNDING IS REQUIRED. The unit should be installed by a qualified service representative and grounded. Install to permit access for servicing.

CAUTION: Risk of electric shock. Disconnect electric power before servicing.

WARNING: Risk of accidental injury or drowning; children should not use hydro massage bathtub without adult supervision.

WARNING: Risk of accidental injury or drowning; do not use hydro massage bathtub unless all suction guards are installed to prevent body and hair entrapment;

WARNING: To avoid injury, exercise care when entering or exiting the hydro massage bathtub;

WARNING: Risk of accidental injury or drowning; do not use drugs or alcohol before or during the use of a hydro massage bathtub equipped with heater to avoid unconsciousness and possible drowning

WARNING: Risk of fetal injury; pregnant or possibly pregnant women should consult a physician before using a hydro massage bathtub equipped with heater;

WARNING: Risk of hyperthermia and possible drowning; do not use a hydro massage bathtub equipped with heater immediately following a strenuous exercise

WARNING: Risk of electric shock; do not permit electric appliances (such as a hair dryer, lamp, telephone, radio, or television) within 1.5M (5 feet) of this hydro massage bathtub;

CAUTION: Test the ground fault circuit interrupter protecting this appliance periodically in accordance with the manufacturer's instructions

WARNING: Risk of hyperthermia and possible drowning; water temperature in excess of 38° C (100.4° F) may be injurious to your health. Check and adjust water temperature before use.

WARNING: Risk of hyperthermia; people using medications and/or having an adverse medical history should consult a physician before using a hydro massage bathtub equipped with heater.

IL EST IMPORTANT DE LIRE ET DE SUIVRE ATTENTIVEMENT CES CONSIGNES DE SÉCURITÉ. VEUILLEZ CONSERVER CE MANUEL DANS UN ENDROIT SÛR

DANGER : Risque de choc électrique. Connecter seulement à un circuit protégé par un disjoncteur de fuite à la terre.

UNE MISE À LA TERRE EST INDISPENSABLE : L'unité doit être installée par un technicien qualifié; elle doit être mise à la terre.

Elle doit être installée de manière à permettre l'accès pour l'entretien.

ATTENTION : Risque de choc électrique. Déconnecter l'alimentation électrique avant tout entretien.

MISE EN GARDE : Risque de blessure ou de noyade accidentelle; ne pas laisser des enfants utiliser la baignoire d'hydromassage sans la surveillance d'un adulte.

MISE EN GARDE : Risque de blessure ou de noyade accidentelle; pour éviter le happement de membres ou de cheveux, utiliser la baignoire d'hydromassage uniquement lorsque les prises d'aspiration sont toutes munies d'une grille de protection.

MISE EN GARDE : Pour éviter les blessures, user de prudence en entrant dans la baignoire d'hydromassage ou en la quittant.

MISE EN GARDE : Risque de blessure ou de noyade accidentelle; afin d'éviter l'évanouissement et le risque de noyade, ne pas prendre de médicaments ni consommer de l'alcool avant ou pendant l'utilisation d'une baignoire d'hydromassage équipée d'un système de chauffage.

MISE EN GARDE : Danger pour le fœtus; les femmes enceintes, que leur grossesse soit confirmée ou non, doivent consulter un médecin avant d'utiliser une baignoire d'hydromassage équipée d'un système de chauffage.

MISE EN GARDE : Risque d'hyperthermie et de noyade; ne pas utiliser une baignoire d'hydromassage équipée d'un système de chauffage juste après un exercice intense.

MISE EN GARDE : Risque de choc électrique; ne pas placer d'appareils électriques (tels qu'un sèche-cheveux, un luminaire, un téléphone, une radio ou un téléviseur) à moins de 1,5 m (5 pieds) de cette baignoire d'hydromassage.

ATTENTION : Vérifier régulièrement le fonctionnement du disjoncteur de fuite à la terre, conformément aux instructions du fabricant.

MISE EN GARDE : Risque d'hyperthermie et de noyade; une température de l'eau supérieure à 38° C (100.4° F) peut présenter un risque pour la santé. Vérifier et régler la température de l'eau avant d'utiliser la baignoire.

MISE EN GARDE : Risque d'hyperthermie; les personnes qui prennent des médicaments ou qui ont des problèmes de santé doivent consulter un médecin avant d'utiliser une baignoire d'hydromassage équipée d'un système de chauffage.



Important Requirements

All outlets connected to pedicure spas must include a GFCI device (Ground Fault Circuit Interrupter) This will reduce the risk of electric shock.



It is important that you contact a local, licensed plumber and licensed electrician to install your new pedicure spa. Installation must be in compliance with all your local and state building codes.



Your pedicure spa cannot operate efficiently or safely unless it is provided with adequate electrical power, sufficient water pressure, proper water temperature, and required drainage capabilities.



Contact your local building inspector for information and local code compliance procedures that need to be followed when having your pedicure spa installed.



Subsequent inspections and approvals that may be required are the responsibility of the purchaser.

safety



IMPORTANT SAFETY INSTRUCTIONS.

Read all instructions before using this pedicure. For additional questions, please call our Technical Support Department at: 800-572-9938

- This pedicure spa unit should only be operated in a room temperature between 40°F (4°C) and 100°F (38°C).
- Do not use unit outdoors or in excessively humid or dusty environments.
- Do not use unit where aerosol (spray) products are being used or oxygen is being administered.
- Do not operate unit if it has been damaged.
- Always connect this unit to a properly grounded electrical outlet.
- This unit is designed only to operate on a standard 110 Volt 60Hz current. Exceeding this standard may cause injury and/or serious bodily harm and/or damage to property.
- Do not use this unit if noise above normal sound is heard.
- To reduce the risk of burns, fires, and electrical shock, never leave this unit unattended if plugged in and always unplug when not in use for an extended period, before installation, cleaning, or removal of parts.
- Keep the power cord away from heated surfaces.
- Do not operate unit if the power cord or plug has been damaged.
- If this unit is operating abnormally or malfunctioning, immediately turn off the power and disconnect the power cord from the outlet; do not operate unit if it is not working properly.
- In the event of a power failure, always turn the power switch to its OFF position.
- When not in use, always turn the power switch to its OFF position.
- To disconnect unit, turn all controls to OFF position and remove power cord from the outlet.
- Keep all electrical devices away from this unit.
- This unit only has a weight capacity of 300 pounds (136.06 kg).
- Enter and exit the unit slowly and carefully.
- Never drop or insert any object into any opening of the unit.
- Close supervision is necessary when this unit is used by, on, or near children, invalids, and disabled persons.
- Do not stand or allow anyone to stand in the spa basin.
- Please be aware that a spa basin filled with water is a potential drowning hazard.
- Check the water temperature before each use; water temperature should not exceed 105°F (41°C) and water temperature in heater should not exceed 150°F (65°C).
- Disinfect the spa basin and jets, after each use with an approved cleaner.
- Do not massage any area of the body that is swollen, inflamed, or covered with skin eruptions.
- Before operating the massage chair, make sure the chair arms are down.
- If there is severe discomfort during the massage, discontinue use and consult a physician.
- Do not use the massage chair for more than 15 minutes at one time.
- Do not put hands or fingers near massage mechanism or rollers while the chair is operating; touching the mechanism can result in injury from the rollers squeezing together.
- Keep the massage chair and its air openings clean and free of lint, hair, and dust; never operate the massage chair if the air openings are blocked.
- Misuse or failure to properly clean pedicure spa unit may result in serious health issues, bodily injury, and/or death.

Health Risk Warning

Use of the pedicure spa unit should be pleasant and comfortable; if there is any pain or discomfort, stop use of the pedicure spa immediately. A physician should be consulted before use of the massage chair by anyone with the following conditions: Malignant tumor, heart disease, pregnancy, Conditions requiring rest, and back disease or trouble from an injury or accident. A physician should be consulted before use of the spa basin and jets, by anyone with diabetes, swelling, fracture, or persistent pain. Anyone with inflamed legs or feet, open wounds, or fungal infections should not use the spa basin and jets. Misuse or failure to properly clean pedicure spa unit may result in serious health issues, bodily injury, and/or death.

WARNING: THERMAL RESETTING PROTECTION DEVICE

The massage chair is equipped with a thermal resetting protection device. This is a safety feature to protect it from overheating. If the chair should suddenly stop and will not start, turn the main power switch off, and do not operate the chair for at least 30 minutes. Failure to turn the chair off may result in the chair starting unexpectedly when the device cools.

WARNING - GROUNDING INSTRUCTIONS AND METHODS: *SAVE THESE INSTRUCTIONS*

This unit must be grounded. If it should malfunction or break down, grounding provides a path of least resistance for electrical current to reduce the risk of electric shock. All outlets connected to pedicure spas must include a GFCI device (Ground Fault Circuit Interrupter). This will reduce the risk of electric shock.

This unit is for use on a standard 110 Volt 60Hz current.

This unit is equipped with a cord having an equipment grounding conductor and a grounding plug. The plug must be plugged into an appropriate outlet that is properly installed and grounded in accordance with all local codes and ordinances.

If you are in doubt as to whether this unit is properly grounded, check with a qualified electrician or serviceman. Fatal electric shock and fire could occur with improper connection of the equipment-grounding conductor. Do not modify the plug provided with the product for any reason; if it will not fit the outlet, have a proper outlet installed by a qualified electrician.

Avant d'utiliser votre nouveau spa de pédicure, veuillez lire et respecter attentivement ces consignes de sécurité afin de réduire les risques de blessures, de dommages corporels graves, de mort accidentelle, d'incendie et/ou d'autres dégâts matériels. Pour des questions supplémentaires, veuillez vous adresser à notre service de soutien technique au : 800-572-9938

MISE EN GARDE : Il est très important de suivre scrupuleusement les procédures de nettoyage de la cuve, à la page 17, afin d'assurer que le spa soit aseptisé après chaque utilisation. Alfalfa Nail Supply ne peut, en aucun cas, être tenue responsable de cas d'infections ou de maladie pouvant découler d'un mauvais nettoyage ou d'un manquement aux exigences de désinfection.

- Ce spa de pédicure doit fonctionner uniquement à des températures ambiantes comprises entre 40 °F (4 °C) et 100 °F (38 °C).
- Ne pas utiliser le spa en extérieur ou dans les milieux très humides ou poussiéreux.
- Ne pas utiliser le spa dans des endroits où l'on emploie des produits en aérosol (pulvérisateur) ou dans des endroits où on administre de l'oxygène.
- Ne pas faire fonctionner le spa s'il a été endommagé.
- Connecter toujours ce spa à une prise électrique correctement mise à la terre.
- Ce spa est conçu pour fonctionner seulement sur alimentation secteur de 110 Volts à 60 Hz. Le faire fonctionner à des tensions supérieures risque d'entraîner de graves blessures et/ou dommages corporels, ou encore de sérieux dommages matériels.
- Ne pas utiliser ce spa s'il produit un bruit supérieur à la normale.
- Afin de réduire les risques de brûlures, d'incendie et de choc électrique, ne jamais laisser ce spa sans surveillance s'il est branché sur l'alimentation. On doit tous les jours le débrancher : s'il n'est pas utilisé pendant une longue période de temps, avant son installation, avant tout nettoyage, ou avant un démontage.
- Maintenir le cordon d'alimentation loin des surfaces chauffées.
- Ne pas faire fonctionner le spa si le cordon d'alimentation ou la fiche a été endommagé.
- Si ce spa fonctionne anormalement ou fonctionne mal, couper le courant immédiatement et débrancher le cordon d'alimentation de la prise murale; ne pas faire fonctionner le spa s'il ne fonctionne pas correctement.
- En cas de panne électrique, placer toujours l'interrupteur d'alimentation sur la position ARRÊT (OFF).
- Lorsque le spa n'est pas utilisé, placer toujours l'interrupteur d'alimentation sur la position ARRÊT.
- Pour déconnecter le spa, placer toutes les commandes sur la position ARRÊT et débrancher le cordon d'alimentation de la prise murale.
- Garder tous les appareils électriques loin du spa.
- Ce spa a une capacité de 300 livres (136 kg) seulement.
- Les personnes traitées dans le spa doivent s'y installer et le quitter lentement et prudemment.
- Ne jamais insérer ou laisser tomber un objet, quel qu'il soit, dans une des ouvertures du spa.
- Une stricte surveillance est nécessaire lorsque ce spa est utilisé pour traiter des enfants, des personnes invalides ou handicapées, ou qu'il est utilisé par ou proche d'eux
- Ne pas se tenir debout (en ne laissant personne se tenir debout) dans la cuve du spa.
- On doit tenir compte du fait qu'une cuve de spa remplie d'eau constitue un risque possible de noyade.
- Vérifier la température de l'eau avant chaque utilisation; la température de l'eau ne doit pas dépasser 105 °F (41 °C) et celle de l'eau dans le réchauffeur ne doit pas dépasser 150 °F (65 °C).
- Désinfecter la cuve et les buses du spa après chaque usage, à l'aide d'un agent de nettoyage approuvé.
- Éviter de masser toute région du corps qui est enflée, irritée ou couverte d'éruptions cutanées.
- Avant de mettre en marche la chaise de massage, s'assurer que les bras de la chaise sont abaissés.
- En cas de malaise grave pendant le massage, arrêter le traitement et consulter un médecin.
- Ne pas utiliser la chaise de massage pendant plus de 15 minutes à la fois.
- Éviter de mettre les mains ou les doigts près du mécanisme ou des galets de massage pendant que la chaise fonctionne; un contact avec ce mécanisme risque d'entraîner des blessures résultant de l'action de pincement des galets.
- S'assurer que la chaise de massage et ses ouvertures d'air sont propres et exemptes de peluche, de cheveux et de poussière; ne jamais faire fonctionner la chaise de massage si les ouvertures d'air sont obturées ou bloquées.
- Une mauvaise utilisation, un abus ou un manquement à nettoyer correctement le spa de pédicure, peut se traduire par de graves problèmes de santé, des blessures et/ou même une mort accidentelle.

Mise en garde relative au risque pour la santé

L'usage du spa de pédicure devrait procurer des effets plaisants et de bien-être; en cas d'apparition de douleur ou de malaise, on doit interrompre immédiatement l'utilisation du spa.

Toute personne qui souhaiterait utiliser la chaise de massage doit consulter un médecin si elle est enceinte ou si elle souffre des troubles suivants : tumeur maligne, maladie cardiaque, conditions exigeant le repos, maux de dos chroniques ou problèmes imputables à une blessure ou un accident. Toute personne qui souhaite utiliser la cuve ou les buses du spa doit consulter un médecin si elle souffre des troubles suivants : diabète, enflures, fracture ou douleurs persistantes. Il est recommandé à toute personne présentant une irritation des pieds, des plaies ouvertes ou des infections fongiques, de ne pas utiliser la cuve et les buses du spa. Une mauvaise utilisation, un abus ou un manquement à nettoyer correctement le spa de pédicure, peut se traduire par de graves problèmes de santé, des blessures et/ou même une mort accidentelle.

MISE EN GARDE – DIRECTIVES ET MÉTHODES DE MISE À LA TERRE :

CONSERVER CE MODE D'EMPLOI

Ce spa doit être mis à la terre. En cas de défaillance ou de panne éventuelles, la mise à la terre fournit au courant électrique un chemin de moindre résistance qui réduit le danger de choc électrique. Toutes les prises connectées aux spas de pédicure doivent comprendre un disjoncteur de fuite à la terre (ou GFCI). Ce dispositif réduira les risques de choc électrique.

Ce spa est conçu pour fonctionner sur une alimentation standard de 110 Volts à 60 Hz. Ce spa comporte un cordon d'alimentation muni d'un conducteur de mise à la terre de l'équipement et d'une fiche avec broche de terre. La fiche doit être branchée dans une prise murale appropriée correctement installée et mise à la terre conformément à tous les règlements et ordonnances municipaux.

En cas de doute quant à la mise à la terre adéquate de l'équipement, communiquer avec un électricien ou technicien agréé. Une mauvaise connexion du conducteur de mise à la terre de l'équipement risque de provoquer une électrocution ou un incendie. Ne modifier en aucun cas la fiche à trois broches fournie avec l'équipement; si elle n'entre pas dans la prise murale, faire installer une prise appropriée par un électricien agréé.

MISE EN GARDE : DISPOSITIF DE RÉINITIALISATION THERMIQUE DE PROTECTION

La chaise de massage est équipée d'un dispositif de réinitialisation thermique de protection. Il s'agit d'une fonction de sécurité qui protège l'appareil contre la surchauffe. Si la chaise s'arrête soudainement et ne peut être remise en marche, mettre l'interrupteur principal à la position ARRÊT (OFF), et ne pas faire fonctionner la chaise pendant au moins 30 minutes. L'omission de couper l'alimentation électrique peut causer un démarrage inattendu de la chaise pendant que dispositif refroidit.

utility

Electrical Service:

A 110V, 60 Hz, 15 Amp GFCI protected grounded circuit must be used to supply power to the pedicure spa.

Water Supply:

- Observe and follow all local codes in regards to plumbing connections.
- 30 to 80 PSI water pressure is needed to correctly fill the basin a correct level.
- The hot water supply temperature must not exceed 150° F (65° C); exceeding this temperature may cause damage to your unit and injury. If the temperature is higher than this, then please lower your water heater to the correct and acceptable temperature.
- Carefully connect the incoming water supply lines to the appropriate fittings located on the back of the pedicure spa.
- For hot and cold water supply fittings (see figure 2) below. For power drain/floor drain fittings location, page 8.
- Shut-off valves are recommended.

To prevent the water supply contamination, our shower head includes a back flow preventer. (see figure 1)
We also highly recommend you to install a Reduced Pressure Back Flow (RPBP) for each hot & cold water supply line. Please check with your local plumbing code requirements.

You are responsible for your valves, connections, and compliance to local codes.

figure 1

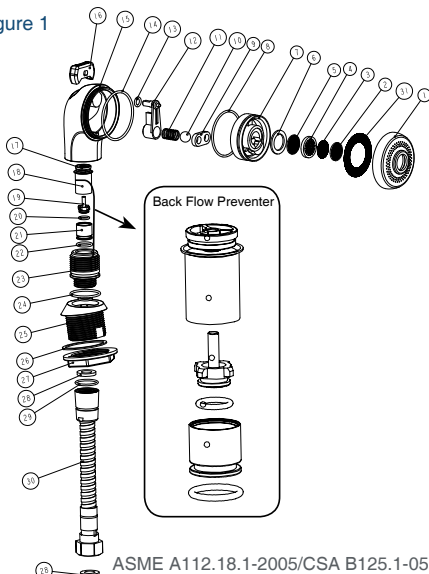


figure 2

Attach hose with red markings to hot water line.



Our Hot & Cold 8' Stainless Steel Hoses are UPC Approved

installation

Location and Support

The pedicure spa must be on a level location. The floor structure of that location must be capable of supporting both the pedicure spa and its occupant at the same time.

To fully recline the pedicure chair, the base of the unit must be positioned to a minimum of 25" from the wall.

Minimum installation dimensions:

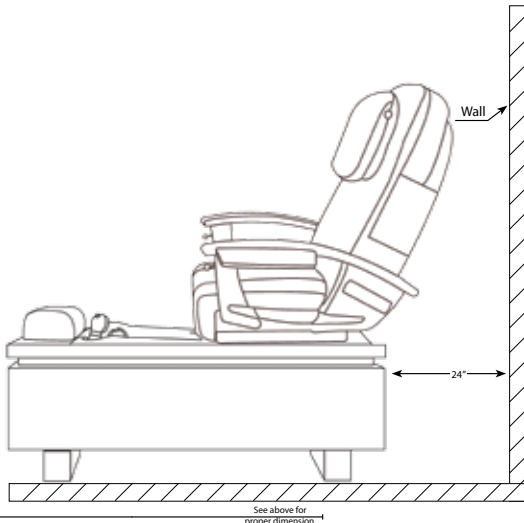
Everest SeriesW 34" x L 80"
IspaW 36" x L 80"
Other Spas.....W 30" x L 69"

Licensed Installation Required

Please check your local plumbing and electrical codes. Installation of this pedicure spa must comply with both. You must hire a licensed plumber and a licensed electrician to complete the applicable connections to your pedicure spa.

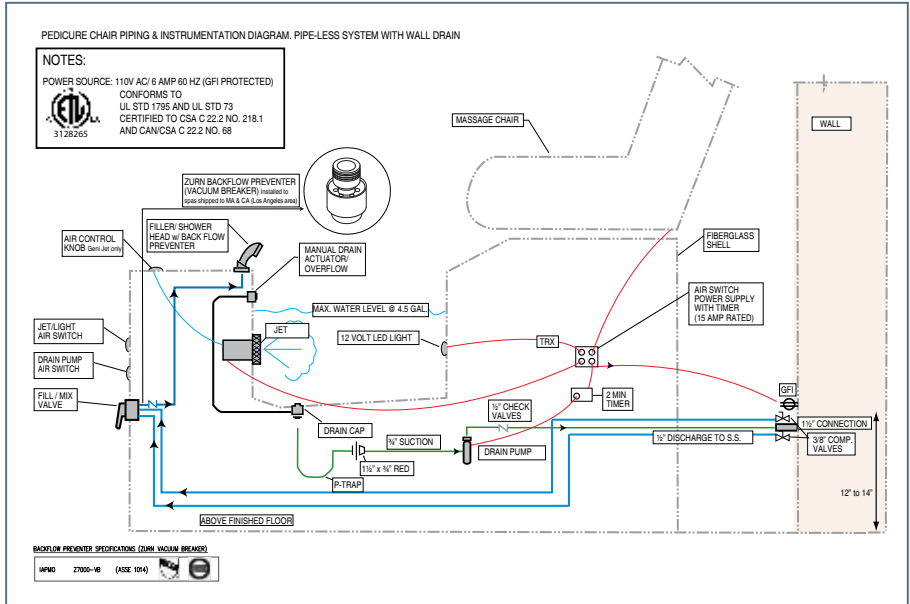
NOTE: Failure to comply with federal, state, or local codes will result in the warranty being null and void.

Parts Included:
5 bolts, 1 Allen Wrench

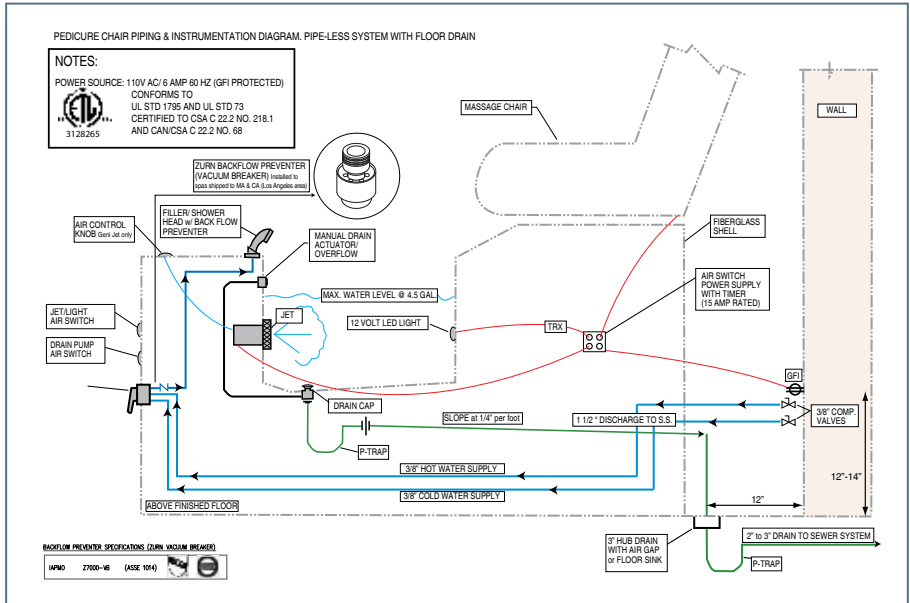


drain installation

Wall Drain Installation

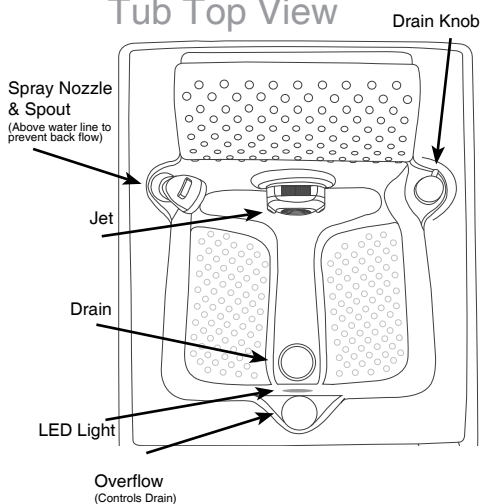


Floor Drain Installation

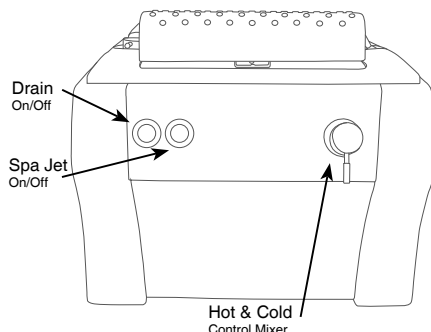


spa basin operation

Tub Top View



Front View



Preparing the Pedicure Spa for Operation:

Clean and disinfect the basin following the instructions on page 17 before initial use.

Operating the Pedicure Spa:

Add Water to the Pedicure Spa Basin:

1. Turn the overflow knob counter-clockwise until it stops to close drain.
 2. Lift upward on the hot & cold control mixer to add water to the basin. Turn the handle in a counter-clockwise direction for cold water or clockwise for warm water as indicated by the red (hot) and blue (cold) markings under the handle. Continue to add water until the fill line is reached. The fill line is indicated by the wavy (~~~~) line in the basin.
- CAUTION:** Always check water temperature before use; hot water can burn skin and can cause serious injuries. Water temperature should not exceed 105° F (41° C).
3. Turn the off water by pushing the handle downward. Start or stop the whirlpool by pressing the jet button.

Remove water from the Pedicure Spa Basin: Make certain the whirlpool jets are turned off by pressing the jet button.

For use with a floor drain, simply open the drain by turning the overflow knob in a clockwise direction until it stops. You should see the water level lowering as water exits the basin.

For use with the optional drain pump feature, open the drain by turning the overflow knob in a clockwise direction until it stops. Press the silver button marked "Drain" on the front panel. The water level will lower as water is pumped out of the basin. Turn the pump off by pressing the "Drain" button on the front panel once the basin is fully drained (NOTE: the drain pump will automatically shut off after 2 minutes.) We recommend turning off the pump manually if all water has drained before automatic shut-off. Drain pump may overheat if operated more than 10 minutes.

NOTE: If you are using a wall drain, it is very important that you close the drain cap for each use. Failure to do so will result in contamination of the system.

Note: Failure to follow these necessary maintenance instructions will void warranty.

Chair Maintenance:

Lubrication is required on the drive shaft every 6 months. Yellow or white grease sold at auto part stores can be used. Please refer to pages 19 and 20, "Greasing Drive Shaft" for further instructions.

Remove dust on the backrest or armrest with a vacuum.

Do not use benzene, thinner or any other solvents on your massage chair.

If the backrest or a armrests become soiled, wipe with a damp cloth, then a dry cloth. (Common vinyl cleaners may be used for tough stains.)

Use a dry cloth only to clean the controller and around the power switch.

Foreign objects should not be inserted between the massage nodes or the unit housing.

Cover the chair when not in use for a long period of time.

If chair will be out of use for a long period of time, unplug and coil the power cord and cover the chair or place in an environment free for dust and moisture.

Prolonged exposure to direct sunlight can cause color fading and/or damage to the massage chair.

Pedicure Product Guidelines:

Please follow these guidelines when choosing products to use in your pedicure spa.

Always use pedicure products and cleaning solutions in accordance with each manufacturer's directions. Understand and follow your state regulations regarding proper product use and disinfecting requirements. This is solely your responsibility.

- Avoid products that contain a foaming agent; this will cause excessive foam.
- Products containing non-dissolving abrasives (such as sand and sea salts) will not harm the internal component structure of your pedicure spa as long as the spa cleaning requirements are followed after each use and each night.
- Oil based products may be used in your pedicure spa as long as the cleaning requirements are followed after each use and each night.

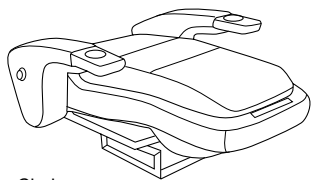
If you follow the operating, cleaning, and maintenance procedures, this pedicure spa can give you many years of service.

If you experience problems with your spa, please contact our Technical Support line at 1-800-572-9938 or email info@buynailsdirect.com

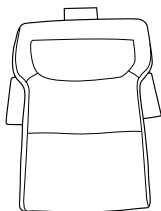
HT-245-PS installation



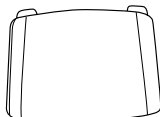
CAUTION: Massage chair is heavy. To install chair to basin two people are required. Risking and attempting to install by yourself could result in serious injuries or damage to the products.



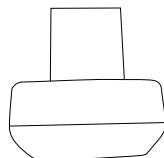
Chair



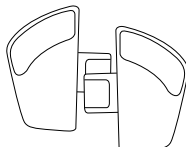
Backrest Pad



Seat Pad



Head Pillow



Manicure Trays



Control Dock

box contents



1.



2.



3.



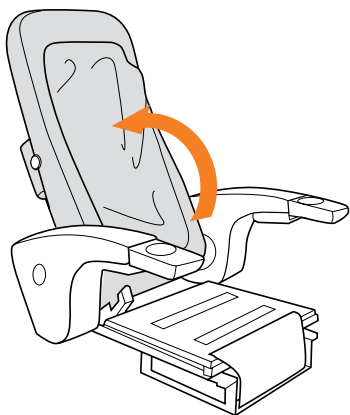
4.



5.

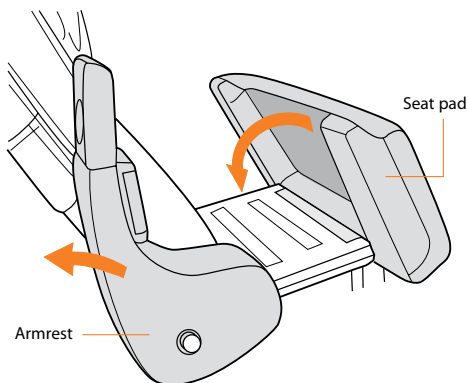


6.



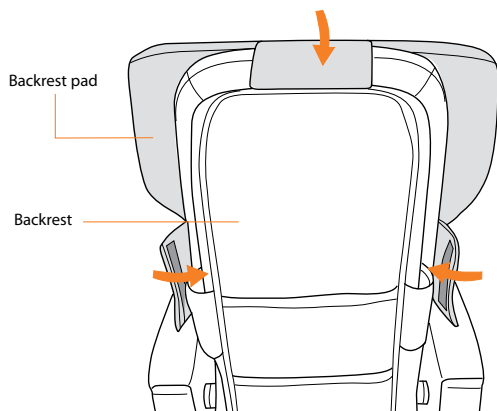
1. Unfold the chair

Remove all packaging materials from the chair. Pull gently up on the backrest to unfold the chair to an upright position. The backrest locks into place automatically.



2. Attach the seat pad

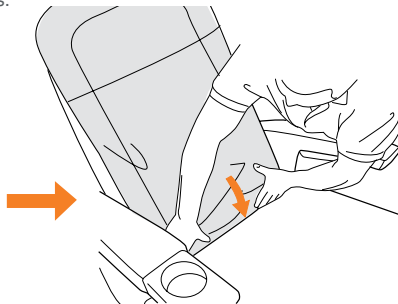
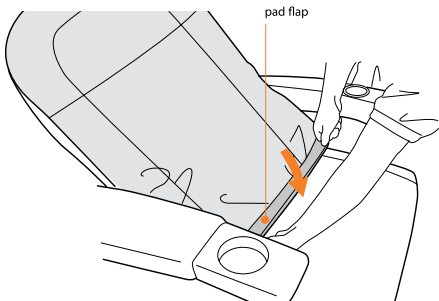
Raise both armrests. Place the seat pad into position, with the front edge placed firmly against the front of the seat frame. While holding the front of the seat pad to ensure that it remains flush with seat frame, press down firmly on the seat pad to secure it to the seat canvas support.



3. Attach the backrest pad

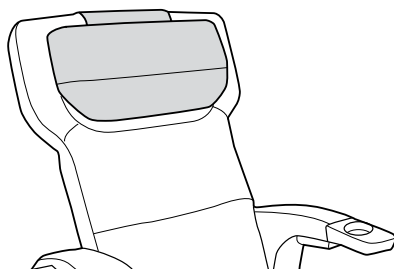
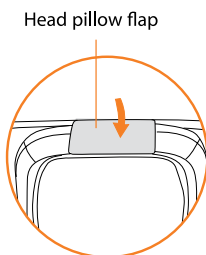
Attach the two side flaps to the backrest using the hook-and-loop fasteners.

From the front of the chair, grasp the bottom backrest pad flap and pull downward to detach the hook and loop fasteners from the back of the backrest pad. Pulling firmly down on the backrest pad, attach the bottom flap to the bottom of the backrest using the hook and loop fasteners.



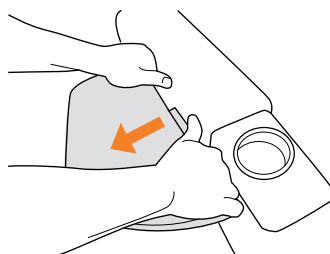
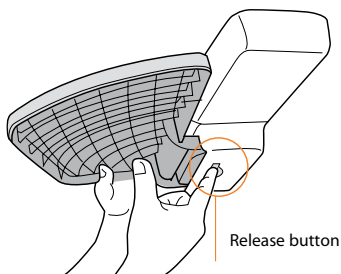
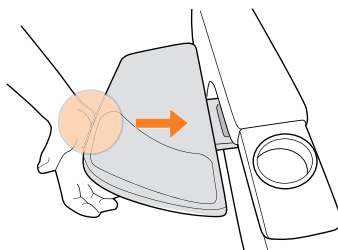
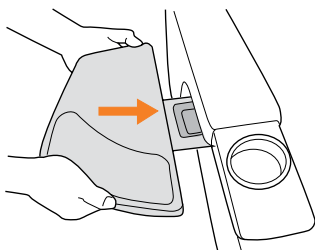
4. Attach the head pillow

Attach the head pillow flap to the backrest at the desired height using the hook-and-loop fasteners



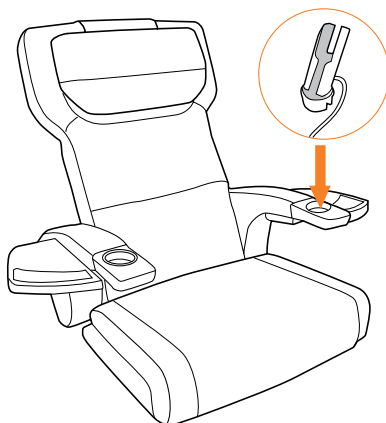
5. Attach the manicure trays

Holding the tray with two hands, align the locking tongue with the mounting dock and insert the tongue straight into the dock. Use the palm of your hand to tap the tongue into the dock until the tray edge is flush with the armrest. To remove the tray, use your fingers to press and hold the release button on the bottom of the tray while pulling outward on the tray with your other hand to release the locking tongue from the dock. Once the tongue is unlocked, use both hands to pull the tray straight out from the dock. When not in use, store the trays in the convenient storage pocket in the back of the back rest.



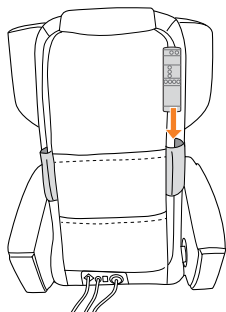
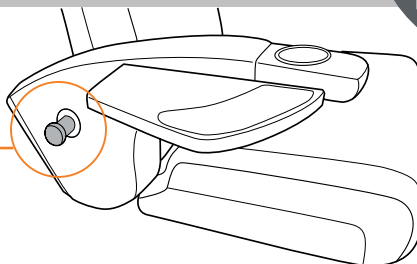
6. Install the controller dock

Remove the cup holder from the armrest in which you want to install the controller dock, then place the controller dock into the armrest receptacle. The controller slides easily into the dock, which rotates 360 degrees for your convenience. Secure the controller dock by installing the screw knob beneath the armrest. Tighten the knob to lock the controller dock into position or leave it loose to allow 360-degree rotation.



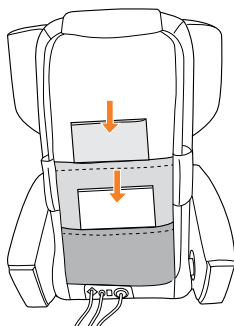
PURSE HANGER

Pull gently outward on the purser hanger for a convenient place to store purses.



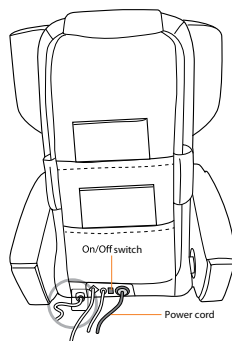
CONTROLLER POCKETS

If your controller holder is not installed in one of the armrests, you can still store the controller conveniently out of the way using one of the controller pockets, located on the each side of the backrest.



TWO STORAGE POCKETS

Two convenient pockets located on the backrest provide handy storage for clip boards and manicure tables.



POWER ON

Plug the power cord into a ground power source, then turn the on/off switch on the back of the backrest to ON. Press the red button on the GFI breaker at the end of the power cord to activate power to the chair.

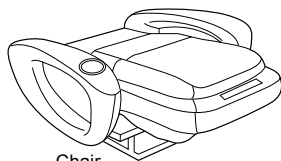
MASSAGE TECHNIQUES

Massage Techniques	What it Does	Benefits
KNEADING 	Kneads your back in a small circular motion on both sides of your spine simultaneously	Relieves tension and soreness by lifting and stretching muscles. Improves circulation and helps bring vital nutrients to the spinal area.
KNEADING PERCUSSION 	Combines circular kneading motion with rapid-tapping percussion strokes.	Relieves muscle tension and spinal pressure, improves circulation and invigorates the back all at once.
PERCUSSION 	Alternates rapid-tapping strokes along the spine to stimulate both spinal muscle and spinal joint areas, emulating the percussive massage technique used in sports medicine for deep muscle therapy	Flexes spinal joints and relieves pressure on the spinal column, invigorates the entire back area.
ROLLING 	Rolls gently up and down your back near your spine.	Warms and loosens your muscles, preparing your back for deeper massage. Relieve muscle tension, improves circulation and relaxes the back.

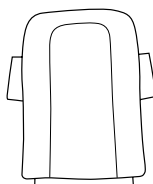
HT-045-PS installation



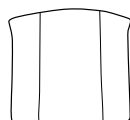
CAUTION: Massage chair is heavy. To install chair to basin two people are required. Risking and attempting to install by yourself could result in serious injuries or damage to the products.



Chair



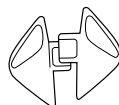
Backrest Pad



Seat Pad



Head Pillow



Manicure Trays

box contents



1.



2.



3.



4.



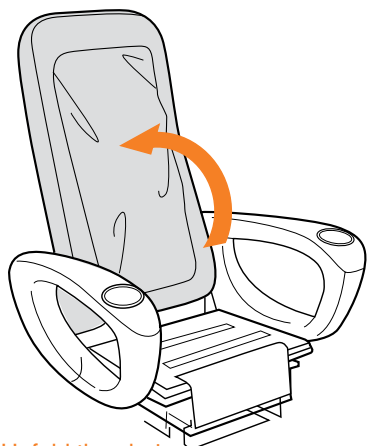
5.



6.

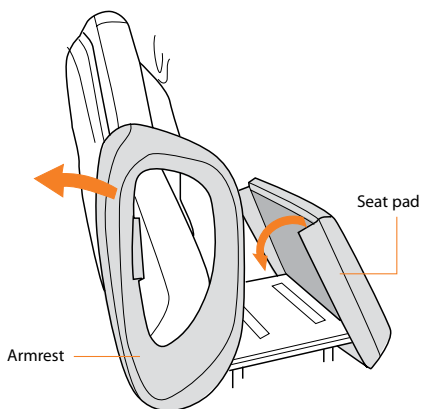


7.



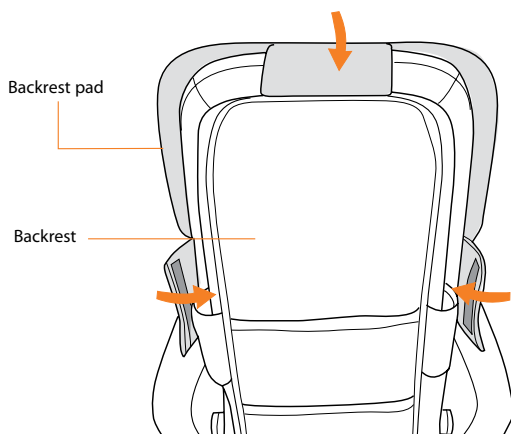
1. Unfold the chair

Remove all packaging material from the chair. Pull gently up on the backrest to unfold the chair to an upright position. The backrest locks into place automatically.



2. Attach the seat pad

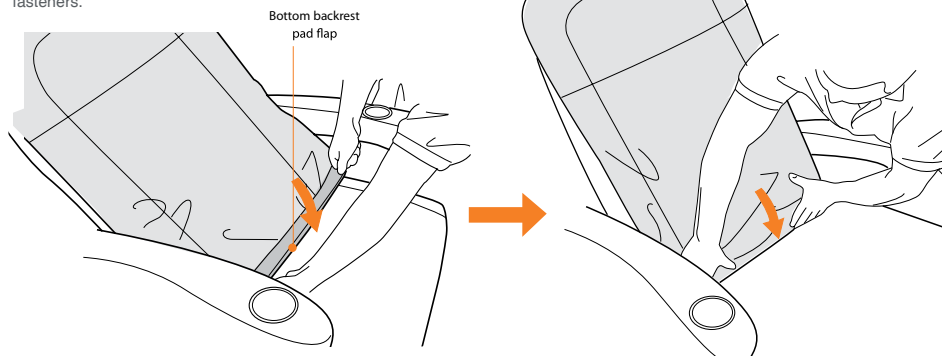
Raise both armrest. Place the seat pad into position, with the front edge placed firmly against the front of the seat frame. While holding the front of the seat pad to ensure that it remains flush with the seat frame, press down firmly on the seat pad to secure it to the seat canvas support.



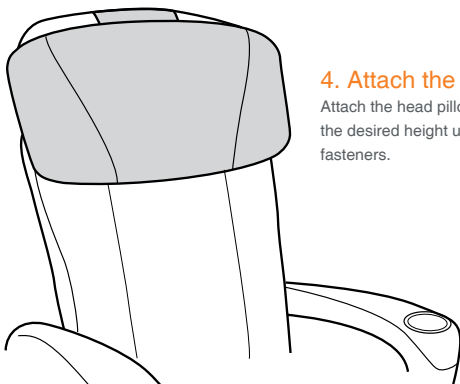
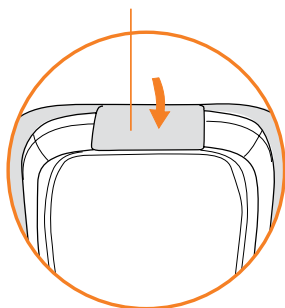
3. Attach the backrest pad

Place the backrest pad into position, then attach the top flap to backrest using the hook-and-loop fasteners. Attach the two side flaps to the backrest using the hook-and-loop fasteners.

From the front of the chair, grasp the bottom pad flap and pull downward to detach the hook and loop fasteners from the back of the backrest pad. Pulling firmly down on the backrest pad, attach the bottom flap to the bottom of the backrest using the hook and loop fasteners.



Head pillow flap

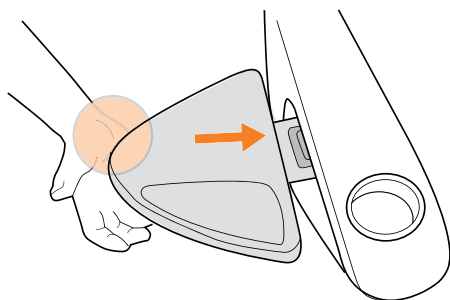
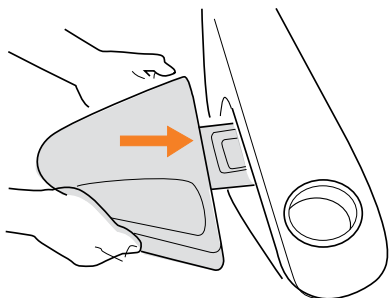


4. Attach the head pillow

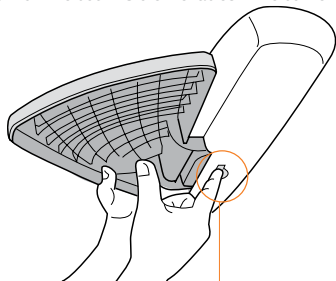
Attach the head pillow flap to the backrest at the desired height using the hook-and-loop fasteners.

5. Attach the manicure trays

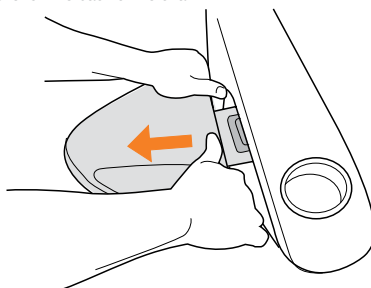
Holding the tray with two hands, align the locking tongue with the mounting dock and insert the tongue straight into the dock. Use the palm of your hand to tap the tongue into the dock until the tray edge is flush with the armrest.



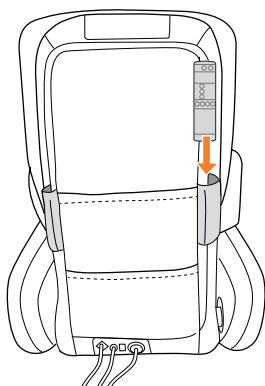
To remove the tray, use your fingers to press and hold the release button on the bottom of the tray while pulling outward on the tray with your other hand to release the locking tongue from the dock. Once the tongue is unlocked, use both hands to pull the tray straight out from the dock. Store the tables in the convenient table storage pocket on the back of the chair.



Release button

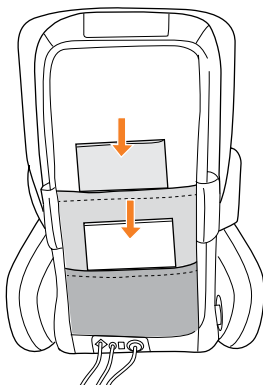


HT-045-PS features



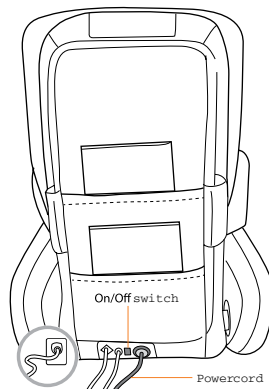
CONTROLLER POCKETS

If your controller holder is not installed in one of the armrests, you can still store the controller conveniently out of the way using one of the controller pockets, located on the each side of the backrest.



TWO STORAGE POCKETS





Two convenient pockets located on the backrest provide handy storage for clip boards and manicure tables.



POWER ON

Plug the power cord into a ground power source, then turn the on/off switch on the back of the backrest to ON. Press the red button on the GFI breaker at the end of the power cord to activate power to the chair.

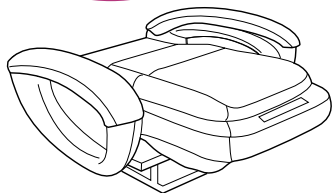
MASSAGE TECHNIQUES

Massage Techniques	What it Does	Benefits
KNEADING 	Kneads your back in a small circular motion on both sides of your spine simultaneously	Relieves tension and soreness by lifting and stretching muscles. Improves circulation and helps bring vital nutrients to the spinal area.
KNEADING + PERCUSSION 	Combines circular kneading motion with rapid-tapping percussion strokes.	Relieves muscle tension and spinal pressure, improves circulation and invigorates the back all at once.
PERCUSSION 	Alternates rapid-tapping strokes along the spine to stimulate both spinal muscle and spinal joint areas, emulating the percussive massage technique used in sports medicine for deep muscle therapy	Flexes spinal joints and relieves pressure on the spinal column, invigorates the entire back area.
ROLLING 	Rolls gently up and down your back near your spine.	Warms and loosens your muscles, preparing your back for deeper massage. Relieve muscle tension, improves circulation and relaxes the back.

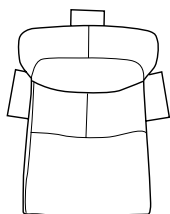
HT-044-PS installation



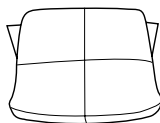
CAUTION: Massage chair is heavy. To install chair to basin two people are required. Risking and attempting to install by yourself could result in serious injuries or damage to the products.



Chair
box contents



Backrest Pad



Seat Pad



Manicure Trays



1.



2.



3.



4.



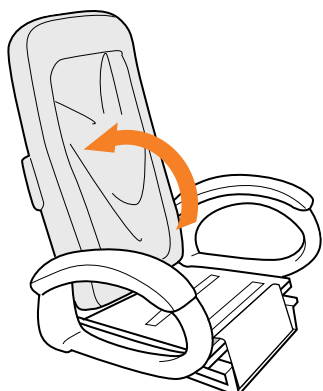
5.



6.

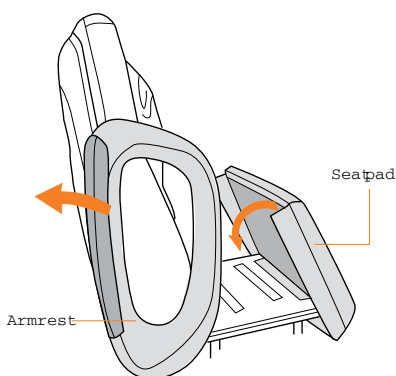


7.



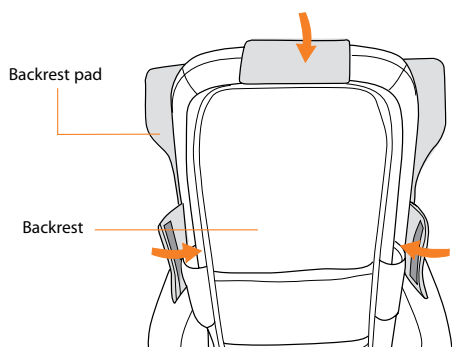
1. Unfold the chair

Remove all packaging material from the chair. Pull gently up on the backrest to unfold the chair to an upright position. The backrest locks into place automatically.



2. Attach the seat pad

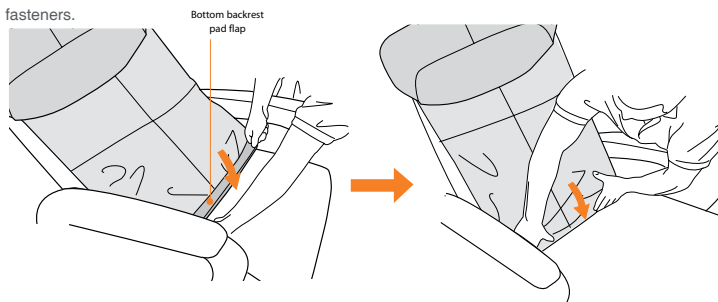
Raise both armrest. Place the seat pad into position, with the front edge placed firmly against the front of the seat frame. While holding the front of the seat pad to ensure that it remains flush with the seat frame, press down firmly on the seat pad to secure it to the seat canvas support



3. Attach the backrest pad

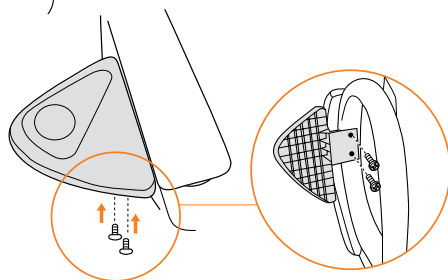
Place the backrest pad into position, then attach the top flap to backrest using the hook-and-loop fasteners. Attach the two side flaps to the backrest using the hook-and-loop fasteners.

From the front of the chair, grasp the bottom pad flap and pull downward to detach the hook and loop fasteners from the back of the backrest pad. Pulling firmly down on the backrest pad, attach the bottom flap to the bottom of the backrest using the hook and loop fasteners.

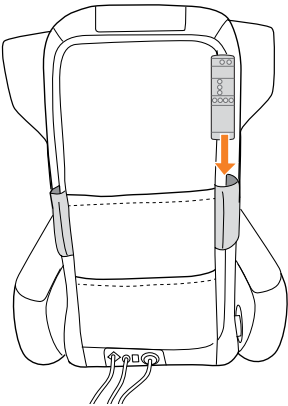


4. Attach the manicure trays

- Use Phillips-head screwdriver, remove the two screws that secure the spacer on the underside of the armrest.
- Place the manicure tray into position, aligning the screw holes with the holes in the armrest.
- Replace the two screws to secure the manicure tray to the chair

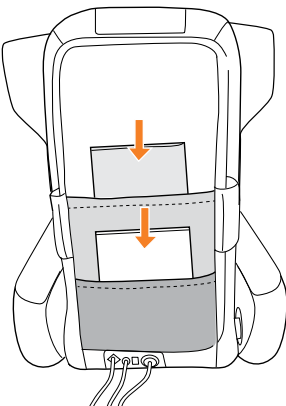


HT-044-PS features



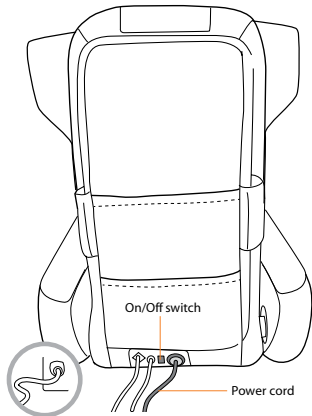
CONTROLLER POCKETS

If your controller holder is not installed in one of the armrests, you can still store the controller conveniently out of the way using one of the controller pockets, located on the each side of the backrest.



TWO STORAGE POCKETS





Two convenient pockets located on the backrest provide handy storage for clip boards and manicure tables.



POWER ON

Plug the power cord into a ground power source, then turn the on/off switch on the back of the backrest to ON. Press the red button on the GFI breaker at the end of the power cord to activate power to the chair.

MASSAGE TECHNIQUES

Massage Techniques	What it Does	Benefits
KNEADING 	Kneads your back in a small circular motion on both sides of your spine simultaneously	Relieves tension and soreness by lifting and stretching muscles. Improves circulation and helps bring vital nutrients to the spinal area.
KNEADING + PERCUSSION 	Combines circular kneading motion with rapid-tapping percussive strokes.	Relieves muscle tension and spinal pressure, improves circulation and invigorates the back all at once.
PERCUSSION 	Alternates rapid-tapping strokes along the spine to stimulate both spinal muscle and spinal joint areas, emulating the percussive massage technique used in sports medicine for deep muscle therapy	Flexes spinal joints and relieves pressure on the spinal column, invigorates the entire back area.
ROLLING 	Rolls gently up and down your back near your spine.	Warms and loosens your muscles, preparing your back for deeper massage. Relieve muscle tension, improves circulation and relaxes the back.

– Stops the massage and parks the massage mechanism at the top of the backrest.

– Lights to indicate that the power switch is on.

– Slides the chair forward and backward for ideal pedicure position.

Auto Massage Experiences – Three unique auto massage experiences automatically massage your back for 15 minutes, using a variety of massage techniques. The LED lights to indicate which massage technique is currently in use.



Restore – Automatically restores the backrest to the full upright position.

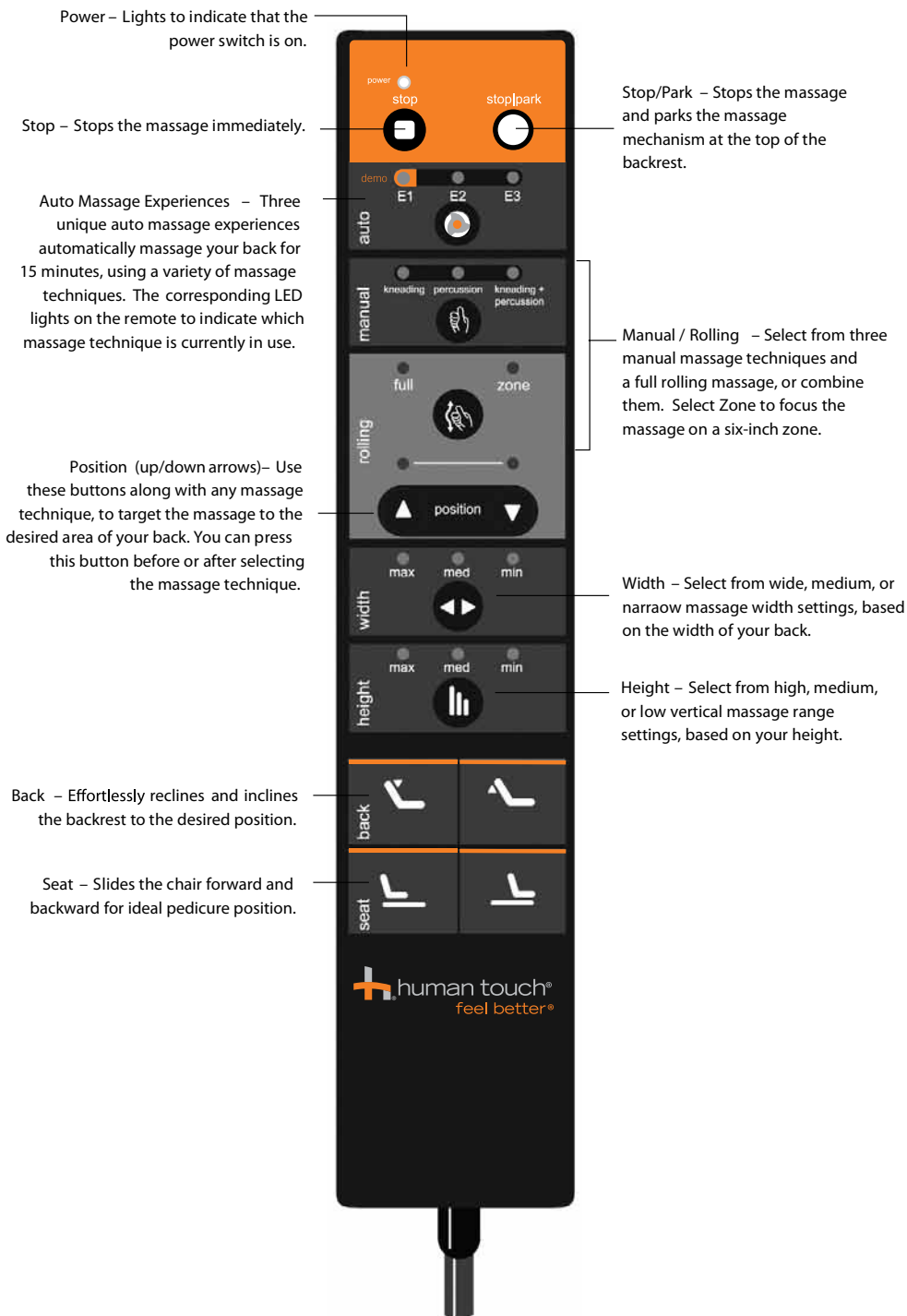
Back – Effortlessly reclines and inclines the backrest to the desired position.

Range – Select from high, medium, or low vertical massage range settings, based on your height.

Width – Select from wide, medium, or narrow massage width settings, based on the width of your back.

Massage techniques – Select from four massage techniques to customize your massage. Rolling can be combined with any of the other three techniques.

Where do you want to feel better?
– Simply press the number that corresponds with the area of your back you want to feel better, then sit back and let the chair do the rest!





Master Power Switch

Before starting, please read all Safety Warnings and Cautions at the beginning of this manual. Plug the massage chair into a grounded 110 VAC power source and turn on the master power switch located on the back side of the backrest, next to the power panel.



Stop Button

Use Stop/Park to cancel all massage sessions and park rollers at the top of the back rest.



Restore Button

Auto Restore functions the same as Stop/Park plus resets backrest to normal upright position.



Seat Power Recline Buttons

Use the "back" buttons to recline seat. Use the "seat" buttons to move seat forwards and backwards.



Auto Massage Programs

Choose from 3 different fully automatic massage programs, which concentrate on certain areas of the back. Programs run for 15 minutes each. (See next page for details.)



Range

Adjusts chair to proper shoulder height.



Width

Focus or diffuse massage pressure by adjusting the width of the precision massage rollers. Select narrow, standard, or wide roller setting while in Percussion, Roll Full Back and Roll Partial Back massage modes.



Position: Use with manual massage buttons.

Allows you to customize the massage for your individual needs. Fine tune the position and focus of your massage with finger tip control. Select custom massage functions, and pinpoint the massage anywhere on your back.



Zone

Concentrates massage in a 5" spot wherever you hit this button.



Roll

Use with manual massage modes. Press roll for full back massage.

HT-135-PS1 installation

CAUTION: Massage chair is heavy. To install chair to basin two people are required. Risking and attempting to install by yourself could result in serious injuries or damage to the products.



1. Please write down all of your serial #s and important information on page 3 in this manual. Register your spa and HT massage chair by filling out and return warranty registration form or fill out form on buynailsdirect.com



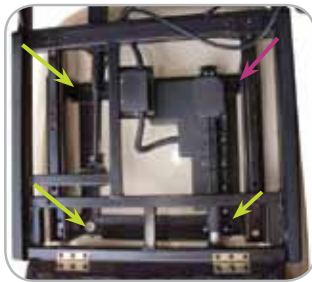
2. Remove chair out of the box carefully, make sure that you do not grab the armrest. Lifting the chair incorrectly may cause damage to the chair.



3. Place chair on the tub.



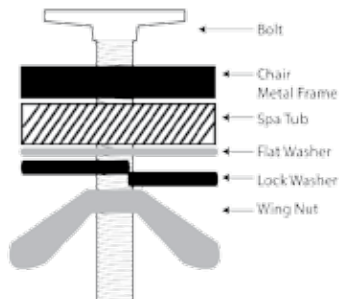
4. While one person holds the chair in place, the second person flips up the bottom cover.



5. Lift the bottom cover. Plug chair in. Move chair forward / backward with remote control to clear the holes. Align bolt holes in chair with holes in spa.



6. Place the 3 regular bolts into holes. Place 1 moon shaped bolt in back right corner. (see figure 5) Add the washers according to the following drawing (figure 7)



7. Install bolt and washers in order shown here. Tighten bolts by reaching underneath the chair. Bolt is not tight until lock washer is fully flat. This will prevent the chair's vibration from unscrewing the bolt.



8. After placing the screws, lock the backrest of chair by pushing the back until it locks. To unlock the chair, pull down lever.

Cushion Installation- HT-135-PS1



1. After attaching the chair to the pedicure tub, simply flip back the bottom cover to install the seat covers.



2. Place the back cushion first.



3. Attach all the velcro areas in the correct location.



4. Your chair should resemble image number 4.



5. Place the bottom cushion next.



6. Your chair should resemble image 6.



7. Attach the two straps of headrest pillow



8. OPTIONAL: Install the provided back softening pad for a softer massage. Unzip very top zipper and insert pad.

Side Tray Installation - HT-135-PS1



1. Remove trays from protective packaging.



2. Lift the chair arm to begin installation of the side tray.



3. Unscrew the bolts under armrest with the Allen Wrench tool that is included with chair.



4. Align holes on tray with holes on armrest.



5. Replace bolts and hand tighten.



6. Secure the bolts tightly with the Allen Wrench tool that is included with chair.



7. To lock trays, simply lift the side tray up.



8. Pull the lever underneath the tray down to unlock.

Please note: Side trays are not for support when entering or leaving chair. Manicure trays are NOT under warranty.

greasing drive shaft

Greasing the drive shaft every 6 months - more if in dusty conditions is recommended. Failure to follow this procedure will void warranty.



HT-135-PS Greasing Drive Shaft



1. First, remove chair cushions.



2. Locate zipper pull on bottom of chair. Carefully cut off plastic zip tie blocking zipper.



3. Unzip cover to expose roller mechanism

suggested item:



4. Use white or yellow colored grease. DO NOT use black. Grease can be bought at any hardware or auto parts store.



5. Apply grease along coiled pole and at the very bottom of pole. Use remote to move mechanism down, and grease top of pole.



6. Also apply grease at the joints of robotic arms.



7. Replace mechanism cover and cushions.

HT-115-PS Greasing Drive Shaft



1. First, remove chair cushions.



2. Locate zipper pull on bottom of chair.



3. Unzip cover to expose roller mechanism

suggested item:



4. Use white or yellow colored grease. DO NOT use black. Grease can be bought at any hardware or auto parts store.



5. Apply grease along coiled pole and at the very bottom of pole. Use remote to move mechanism down, and grease top of pole.



6. Also apply grease at the joints of robotic arms.



7. Replace mechanism cover and cushions.

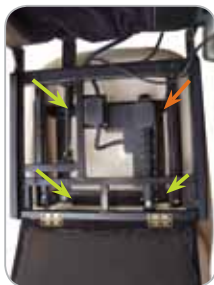


CAUTION: Massage chair is heavy. To install chair to basin two people are required. Risking and attempting to install by yourself could result in serious injuries or damage to the products.

HT-115-PS1 installation



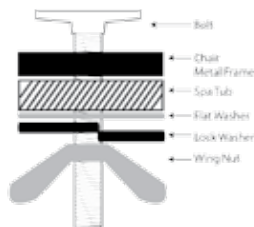
1. Carefully remove chair from packaging. Place chair on top of spa. While one person holds the chair in place, flip up the bottom cover.



2. Plug chair in. Move chair forward/backward with remote control to clear the holes. Align bolt holes in chair with holes in spa



3. Place the 3 regular bolts into holes. Place 1 moon shaped bolt in back right corner. (see figure 2) Add the washers according to the following drawing.



4. Install bolt and washers in order shown here. Tighten bolts by reaching underneath the chair. Bolt is not tight until lock washer is fully flat. This will prevent the chair's vibration from unscrewing the bolt.



5. Place back cushion first.



6. Place flap on seat bottom, then place bottom cushion.



7. Attach head rest cushion



8. To recline chair, pull lever on left side and pull top of chair down.

HT-115-PS1 remote features



Master Power Switch

Before starting, please read all Safety Warnings and Cautions at the beginning of this manual. Plug the massage chair into a grounded 110 VAC power source and turn on the master power switch located on the back side of the backrest, next to the power panel.



Stop Button

Use Stop to cancel all massage sessions and park rollers at the top of the back rest.



Manual Massage Programs

Choose from kneading or compression massage, press one of these then use rolling to move mechanism up or down, and press rolling again to stop.



Auto

Fully automatic massage program.



Seat Forward/Backward Buttons

Use the "forward" button to move seat forward.
Use the "backward" button to move seat backwards.



Our spas feature Liner™ Jet Technology with the innovative SaniSmart® Jet. Paired with disposable liners, buffers, files, and pedicure sponges, our pedispas make it easy to keep your customers safe, and your salon clean and sanitary.

SaniSmart®

Vệ sinh an toàn số một™ • Every visit a clean visit™



ATTENTION!

- Do not run SaniSmart® jet without water. This will void your warranty
- Do not place two wet ends into same bowl when cleaning. The jet's strong magnets could cause injury.
- Do not attach two wet ends to each other. Doing so will cause breakage to wet ends and will void the warranty.

Troubleshooting:

Why is SaniSmart® Jet not on?

1. Make sure water is above the wet end.
2. Turn off for 3 seconds to reset the SS jet, then turn on again.
3. Make sure the magnetic disk is freely rotating.
4. Make sure all power connections are connected properly.
5. Make sure you have 110V-120V power from your wall outlet.
6. Make sure clear air tube from push button labeled Jet is connected to the power supply (black box)
7. Wet-end must be in place. SaniSmart® dry-end (motor) will automatically turn off if wet end is not detected.

Turn off for 3 seconds to reset the SaniSmart® jet, then turn on again.

Why is SaniSmart® Jet making noise or vibrating?

The alignment is not correct.
Remove SaniSmart® wet-end and reattach.
Adjust to align accordingly.



1. Insert disposable liner



2. Cradle SaniSmart® wet-end in your palm. Do not hold with your thumb. Jet will attach itself to dry-end. Adjust to align accordingly.

3. Fill water to 2 inches above SaniSmart® wet-end

4. Press jet button. Light and SaniSmart® jet will turn on.



5. After completing pedicure, drop wet end into concentrated disinfectant solution.

6. Each day, clean impeller with a soft brush.



SaniSmart®



INSERT

Insert SaniSmart® Liner



PLACE

Place Jet and fill water



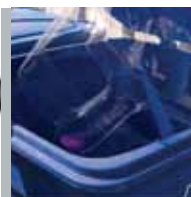
SERVICE

Service your customers with SaniSmart® disposable files and buffers



SANITIZE

Simply remove the wet end of the jet, disassemble, and immerse into concentrated Pedicure disinfectant solution.



DISCARD

Pull long tab, drain water then wipe entire basin with disinfectant wipes. Go green and recycle the liner

1 - INSERT Liner

A fast and sanitary solution!

Liners are inexpensive, disposable and easy to use.



SaniSmart® Liners
Use with round glass bowl
\$1 ea

SaniSmart® Liners
Use with square fiberglass sink
\$1 ea



Econo™ Liners
50¢ ea

Fits most bowls. Simply slip on the liner onto the basin and footrest, then place the SaniSmart® Jet. Square basin requires the assist of two 3M hooks.



Econo™ Liners covers basin and footrest.

2 - PLACE Jets



SaniSmart® Jet

Place the jet in the designated area. The jet's mechanism operates by a magnetic disk in an encased propeller that produces a powerful current.

Patent Pending

3 - SERVICE SaniSmart® Disposables

Use once, then throw away or give to your customer.



Disposable Buffer
Grit: 100/120
dimensions:
L 2 5/8" x W 1 1/4"
x 1/2" thick
\$120 case/1000ct



Disposable Acrylic / Manicure File
Grit: 80/120
dimensions:
L 4 1/4" x W 5/8"
\$100 case/1000ct



Pedicure Sponge
Coarse
dimensions:
L 3 1/8" x W 1 5/16"
x 1/2" thick
\$85 case/500ct

SaniSmart® SS2Jet Retrofit Kit Installation Instructions



Easily update any pedicure spa by replacing your old jet with the innovative SaniSmart® Retrofit Jet.



Insert rubber gasket, smooth side facing plate.



Insert motor through 3.5 inch hole from inside of sink



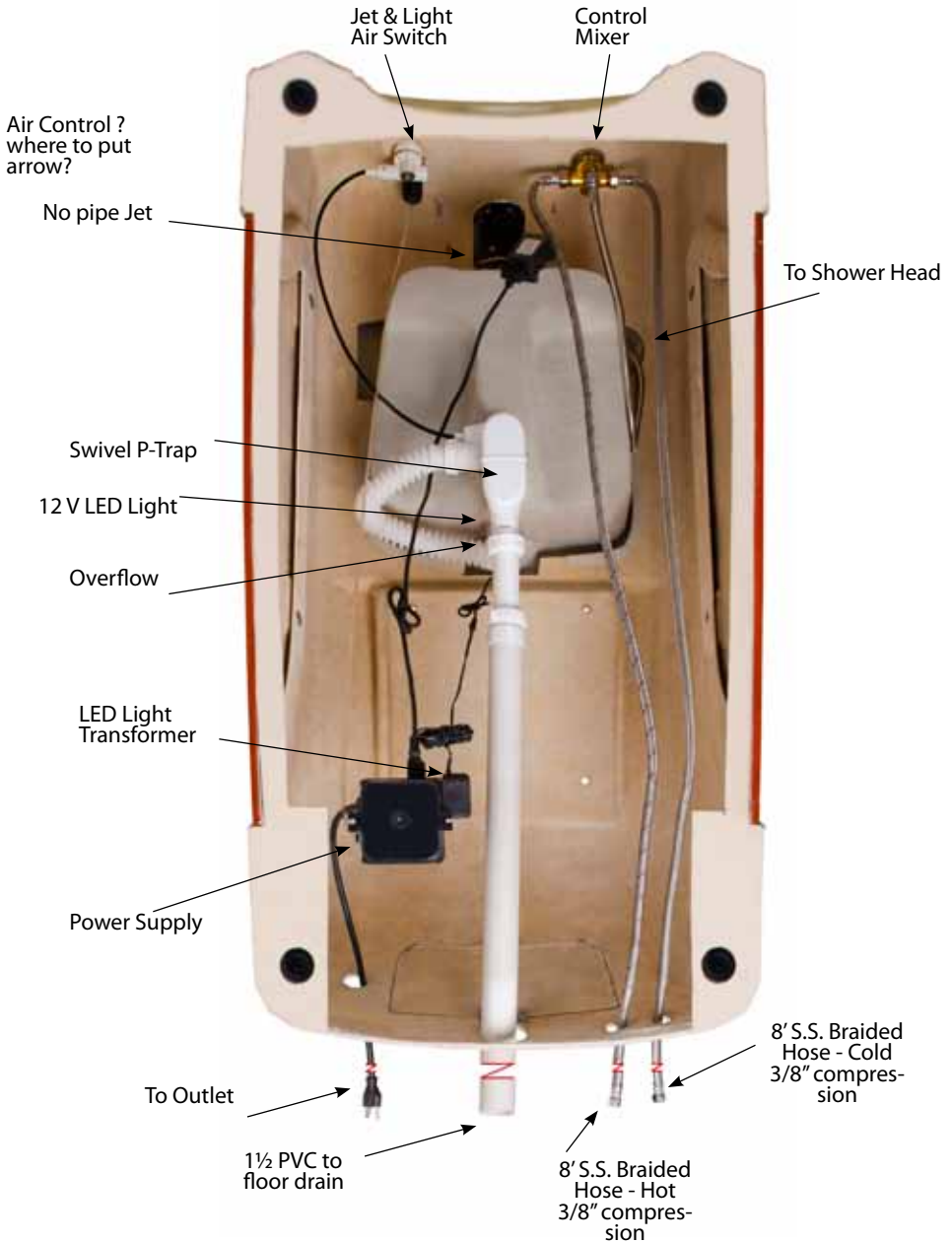
Make sure four dimples on the plate will make two lines parallel to the ground before tightening the screws. Tighten screws position #1 then #3, and #2 then #4.



Please SaniSmart Wet End and installation is complete.

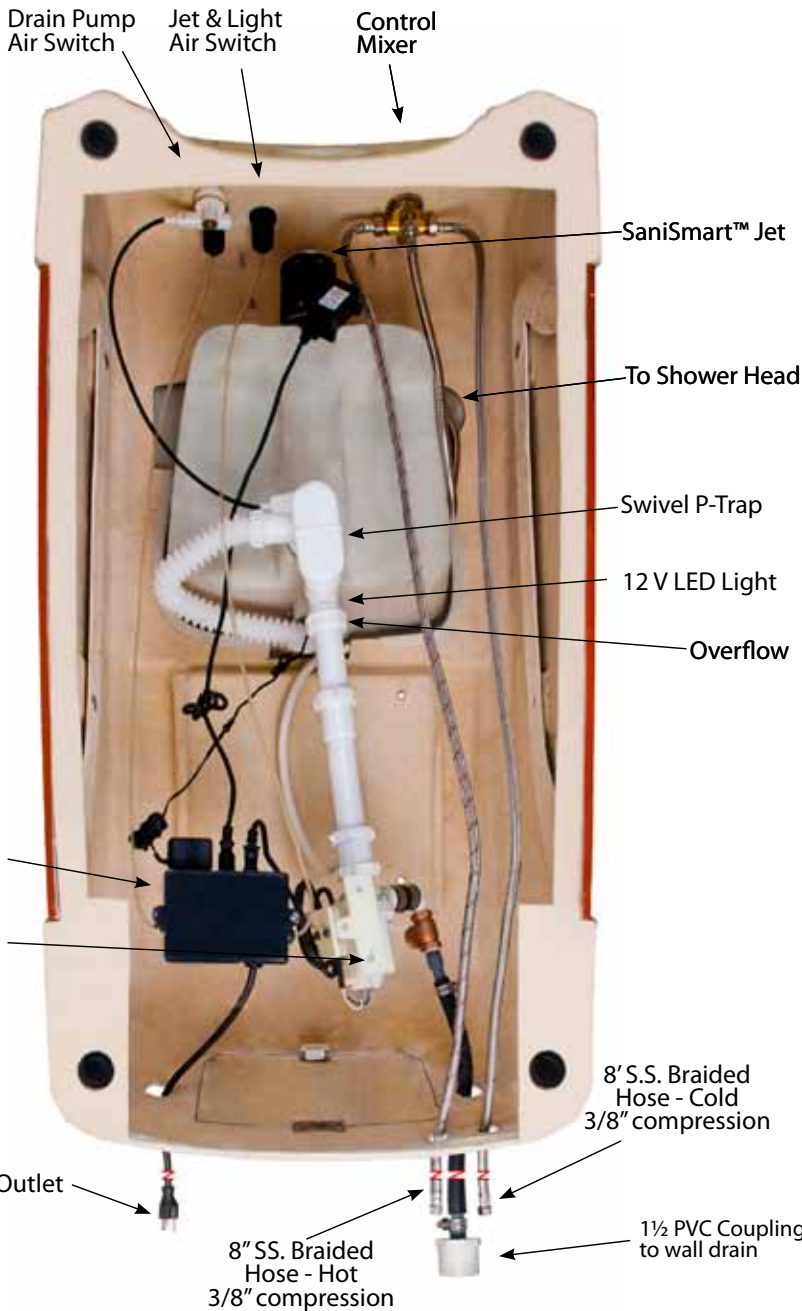
Do not use drill gun. Please hand tighten.

Floor Drain



Parts Identification

Wall Drain



Quality parts for your pedispa.

SPA JETS

SaniSmart™ Jet 24VDC

\$250

Set: dry end, wet
end, & transformer



Dry End Only
(motor & board)
\$140

Wet End Only
\$75

New Technology. Works
with spa liners. No drilling
necessary. Patent Pending

Transformer
24W DC
\$35

SaniSmart™ Jet 120VAC / 650 mA

\$175

Set: dry end,
& wet end



Dry End Only
(motor & board)
\$100

Wet End Only
\$75

New Technology. Works with spa
liners. Needs 3.5" hold drilled.
Patent Pending

D29 Jet 120V / 85W

\$110



Jets are angled to 29° for precise
whirlpool action. Patent Pending

PLUMBING ACCESSORIES

Level Controller with Solenoid Valve

\$250



1 1/2" Swivel P-Trap

\$6



Eliminates odors from drain.

Overflow Assembly

PRC \$37
ITALY \$49.92



Outside Overflow Assembly

\$59



PLUMBING ACCESSORIES

8' Stainless Steel Braided Hoses

HOT \$12
COLD \$11



1/2 NPSF x 3/8 compression
Flexible Tube.

DRAIN PUMP ASSEMBLIES

Little Giant Drain Pump Assembly

\$250



Includes check valve & P-Trap 110V 2.5A

Drain Pump Assembly

\$150



Includes check valve & P-Trap 110V 1A

CHECK VALVES

Dual Check Valve

\$159



Some cities require a backflow preventer to be installed on hot/cold water line.

CSA approved.

1/2" Check Valve

\$7



Use with drain pump.

HARDWARE

1/2" Diverter Tee

\$17.90



Allows 1 direction flow to spray nozzle or filler spout. (for older spa designs)

SHOWERHEAD AND HOSE

Shower Head Complete

\$41.58



Includes shower head,
angle holder & stainless steel hose.

Shower Head Only

\$24.95



Stainless Steel Hose Only

\$9.92



POWER SUPPLY

Floor Drain Power Supply \$39.⁹²



3 on/off, 1 continuous
Activate by air switch.

Wall Drain Power Supply \$82.²⁷



2 on/off, 1 timer (2 minutes),
1 continuous
Activate by air switch.

PUSH BUTTON

Engraved Metal Push Button \$8.²⁵



Push Button Tube



\$40.67
1/8" Clear tubing. 500' Roll

\$.15 Per Foot

CONTROL MIXER

Control Mixer Single lever \$72



1/2" NPSM Connections

Econo Control Mixer 59



1/2" NPSM Connections

Single Lever Replacement Cartridge \$9.¹⁷



LED LIGHTS

LED Light Set \$49.⁹²



Set includes:
18 LED bulbs, AC 12V transformer, reflector housing, nut & gasket, light holder. Bulb and transformer also available separately.

LED Light Set PRC \$26.⁶⁷



Set includes:
18 LED bulbs, AC 12V transformer, reflector housing, nut & gasket, light holder. Bulb and transformer also available separately.

AIR CONTROL

Silent Air Control \$5.⁴³



For use with Geni Jet.
Controls air mixed with water jet.

Air Control Tube



\$40.67
3/8" 100' Roll
\$.50 Per Foot

Air Control Barbs

a. 3/8 barb x 1/2 spg \$.83



b. 3/8 barb tee \$.92



Drain Stopper



specifications

HT-245PS Chair Specifications

Massage Robot: 3 Motor/ 4 Roller
Operating Voltage: AC110 -120 V 60 Hz
Power Consumption:65 Watts
Size: Chair (upright) 31" L x 30" W x 42" H
Size: Chair (reclined) 50" L x 30" W x 35" H
Recline Angle: 165 Degrees
Forward/Backward: 7" distance

Chair Weight - 89 lbs
Maximum load weight - 285 lbs

Number of Massage Functions: Four (4)
(Rolling, Kneading, Kneading & Percussion, Percussion)
Unique Body Map function
Programmed Function: 4 Steps (Repeating)
Massage Head Storage: Auto at Top
Automatic Timer Shut-Off: 15 minutes
Total Massage Stroke Length: 18.0 Inches
Rolling: 15 In/Minute
Kneading: 50 - 35 - 20 Cycles/Minute
Compression: 70 - 50 Cycles/Minute
Percussion: 135 -110 Cycles/Minute
Up/Down: 25 - 35 - 45 In/Minute
Cover Fabric Material: Polyurethane
Accessories: Manicure Trays and remote control dock.
Hand-held low voltage remote control for massage chair.

*Specifications are subject to change without prior notice.

HT-045PS Chair Specifications

Massage Robot: 3 Motor/ 4 Roller
Operating Voltage: AC110 -120 V 60 Hz
Power Consumption:65 Watts
Size: Chair (upright) 31" L x 30" W x 42" H
Size: Chair (reclined) 50" L x 30" W x 35" H
Recline Angle: 165 Degrees
Forward/Backward: 7" distance

Chair Weight - 89 lbs
Maximum load weight - 285 lbs

Number of Massage Functions: Three (3)
(Kneading, Percussion, Kneading & Percussion)
Massage Head Storage: Auto at Top
Automatic Timer Shut-Off: 15 minutes
Total Massage Stroke Length: 18.0 Inches
Rolling: 15 In/Minute
Cover Fabric Material: Polyurethane
Accessories: Manicure Trays
Hand-held low voltage remote control for massage chair.

*Specifications are subject to change without prior notice.

HT-044PS Chair Specifications

Massage Robot: 3 Motor/ 4 Roller
Operating Voltage: AC110 -120 V 60 Hz
Power Consumption:65 Watts
Size: Chair (upright) 31" L x 30" W x 42" H
Size: Chair (reclined) 48" L x 30" W x 36" H
Recline Angle: 165 Degrees
Forward/Backward: 7" distance

Chair Weight - 88 lbs
Maximum load weight - 285 lbs

Number of Massage Functions: Three (3)
(Kneading, Percussion, Kneading & Percussion)
Massage Head Storage: Auto at Top
Automatic Timer Shut-Off: 15 minutes
Total Massage Stroke Length: 18.0 Inches
Rolling: 15 In/Minute
Cover Fabric Material: Polyurethane
Accessories: Manicure Trays
Hand-held low voltage remote control for massage chair.

*Specifications are subject to change without prior notice.

HT-135-PS1 Chair Specifications

Massage Robot: 3 Motor/ 4 Roller
Operating Voltage: 110 -120 V / 50 Hz
Power Consumption: 70 Watts
Size: Chair (reclined) 61"L x 28"W x 34"H
Recline Angle: 165 Degrees
Forward/Backward: 7" distance

Chair Weight -150lbs
Maximum load weight- 285 lbs

Number of Massage Functions: Four (4)
Programmed Function: 4 Steps (Repeating)
Massage Head Storage: Auto at Top
Automatic Timer Shut-Off: 15 minutes
Total Massage Stroke Length: 18.0 Inches
Full Length Travel: 43 seconds (25 - 35 - 45 In/Min)
Rolling: 25 - 35 In/Minute
Kneading: 50 - 35 - 20 Cycles/Minute
Compression: 70 - 50 Cycles/Minute
Percussion: 135 -110 Cycles/Minute
Up/Down: 25 - 35 - 45 In/Minute
Cover Fabric Material: Polyurethane
Accessories: Massage Softening Pads
Hand-held low voltage remote control for massage chair.

*Specifications are subject to change without prior notice.

HT-115-PS Chair Specifications

Massage Robot: 2 Motor/ 4 Roller
Operating Voltage: AC110 -120 V 60 Hz
Power Consumption:50 Watts
Size: Chair (reclined) 45" L x 28" W x 32" H
Recline Angle: 165 Degrees
Forward/Backward: 5" distance

Chair Weight - 80 lbs
Maximum load weight - 285 lbs

Number of Massage Functions: Three (3)
(Rolling, Kneading, Percussion)
Automatic Massage Mode - (1)
Massage Head Storage: Auto at Top
Automatic Timer Shut-Off: 15 minutes
Cover Fabric Material: Polyurethane
Hand-held low voltage remote control for massage chair.

*Specifications are subject to change without prior notice.

Basin Specifications

Hot and cold water supply lines required (hot and cold shut offs
may be installed under or behind pedicure spa basin) see pg 6

Drain installation: Reference note on page 8; can be installed with
optional drain pump for wall drain or a gravity drain.

Capacity of basin: 4.5 U.S. Gallons (17.03L) = Traditional Whirlpool
(with Jets)*
Power source: 110V AC / 15 Amp, 60 Hz (GFCI Protected)
Caution: Pedicure spa must be installed by a licensed electrician
and a licensed plumber, conforming to all local and national electrical codes.

Jet System: Pipe free whirlpool pedicure spas: 1 jet, LED lights,
optional drain pump.
Jets: (may contain either)
Geni Jet Motor: 120V AC, 60Hz, 1.2A
D-29 Jet: 120V, 85W, 60Hz, 1A
Sanismart Jet: 110V AC, 60 Hz

Drain Pump Motors: (may contain either)
Little Giant - Model # 3E-34N, 115V, 60 Hz, 2.5A,
T4-DPH: 120 V AC, 85W, 60Hz, 1 A

LED Lights: (may contain either)
L18: input: 120V AC, 60Hz, 28VA Output: 12V, 60 Hz, 1.67A
L18C: input: 120V AC, 60Hz, 28 VA, Output: 12V Ac 1.67A, 20VA,
Class 2

Electrical switches: On/Off air switch for Geni Jet & Led Light. On/
Off air switch for drain pump.

Limited warranty: One (1) year from date of purchase for parts only,
labor services are not included.
Due to our policy of continuous improvements, all specifications are
subject to change without notice.

*Note: All dimensions and weights are approximate

Shipping Weights (complete spa):

Atlantis	255lbs
Avanti	255lbs
Bellini	260lbs
Bipa	?
GSpaF	360lbs
Gspa W	400lbs
Ion	295lbs
Ion II	300lbs
Jaguar	255lbs
Jaguar II	180lbs
Katali	300lbs
Katali II	325lbs
Kata-Gi	310lbs
Orenza	280lbs
Panther	275lbs
Tivoli	315lbs
Tiwala	?
Tra	?
Vira	250lbs

Limited Warranty • PRE-REGISTRATION REQUIRED

Alfalfa Nail Supply Pedicure spas are manufactured with the highest standards for quality and workmanship. Accordingly, Alfalfa warrants its products as follows:

To the original owner of the Alfalfa Nail Supply, Inc. pedicure spas, Alfalfa may repair or replace at its option any pedicure spa deemed to be defective in material or workmanship upon inspection by an authorized representative of Alfalfa. This warranty covers only the listed components for the following time periods:

- Recirculating Pump: One (1) year from date of shipment
- All other components: One (1) year from date of shipment
- There are no other warranties, express or implied.

Owner must pay all labor and shipping charges necessary to replace or repair the pedicure spa. Alfalfa will not be liable for any consequential, incidental, or contingent damages. Some states do not allow the exclusion or limitation of incidental or consequential damages, so the above limitation or exclusion may not apply to you.

If a pedicure spa needs to be exchanged, it will be limited to supplying a replacement pedicure spa of comparable style and size. Alfalfa may at its own discretion use refurbished parts or pedicure spas for repair and replacement purposes.

This warranty is null and void if the pedicure spa is removed from its place of initial installation or is not installed in accordance with federal, state, or local codes and ordinances. Furthermore, this warranty does not apply if the pedicure spa has been subject to misapplication, misuse, improper installation or maintenance, negligence, improper cleaning, or other circumstances beyond Alfalfa's control. Alfalfa Nail Supply, Inc Pedicure spas have a maximum weight capacity of 300 lbs. Any use exceeding this limit voids the warranty.

The following are examples of what is not covered by the warranty:

- 1) Natural wear and tear
- 2) Staining, fading, or discoloration of the vinyl seat, armrests, or footrest.
- 3) Manicure trays
- 4) Damage resulting from standing in the basin.
- 5) Damage to pump parts and/or motor parts due to obstruction in plumbing lines, etc.
- 6) Staining, fading, or discoloration of plastic surfaces due to exposure and/or the use of harmful cleaning agents or chemicals.
- 7) Staining, fading, or discoloration caused by improper or poor water additives not related to maintenance of proper water.
- 8) Malfunctions or damage caused by improper installation, including not meeting local and state plumbing, electrical, and building codes.
- 9) Freight damage, misuse, neglect, abuse, and natural disaster
- 10) Unauthorized repairs.
- 11) Repair service.

Some states do not allow limitations on how long an implied warranty lasts, so the above limitations may not apply to you.

Should service be required for defect or malfunction during the warranty period, please contact:

Alfalfa Nail Supply, Inc.
Customer Service
11488 S. Choctaw Dr.
Baton Rouge, LA 70806
Toll Free: 1-888-533-7066 • Fax: 225-236-0290 • Info at buynailsdirect.com • <http://www.buynailsdirect.com>

By using this pedicure spa, Owner agrees that the obligation of Alfalfa shall not extend to indirect or consequential damage, injury or serious bodily harm, which may result from pedicure spa use. Owner agrees that the obligations of Alfalfa are limited to those set herein and that there are no other obligations except those expressly agreed to in writing by Alfalfa. No dealer or other person has any authority to bind Alfalfa to changes or additions to this warranty or its products; accordingly, Alfalfa is not responsible for any such warranties or representations.

Terms and Conditions: All returned or exchanged items must be in new condition, in their original packaging, and must include all packing material, blank warranty cards, manuals and all accessories. Defective items may, at Alfalfa's option, be repaired or exchanged for the same model or manufacturer's equivalent model. Alfalfa is not responsible for any consequential or incidental damage resulting from use of any merchandise bought from us. No refunds are given on shipping and handling charges. Alfalfa is not responsible for lost or damaged packages.

To register for your warranty: (Warranty will not be honored without prior registration.)

Please copy this page, fill out section below and attach a copy of your sales receipt and mail to us.

(Some states do not allow registration to be a requisite of warranty, so the above may not apply to you.)

Company: _____ Contact: _____

Address: _____

City/State/Zip _____

Telephone: _____ Email: _____

☐ Yes, Please send me updates and news on the latest Alfalfa Nail Supply, Inc. products and promotions

PediSpa Model: _____

Tub Color: _____

Sink Color: _____

Spa Serial #: _____

Chair Model: _____

Chair Serial #: _____

Place of Purchase: _____

Purchase Date: _____

Purchase Price: _____

Address: _____

City/State/Zip _____

Telephone: _____