

LCG
System

By LC CORP



Owner's manual

Model: L-280

Owner's manual

Table of Contents

Inspection of the LCG - model L-280	3
Introduction	4
Specification	5
Identified parts	6
Spa Installation Instruction	7
Safety Instruction	9
Health risk warning	11
Operation & use Adjust footrest	12
Cleaning & Maintenance	13
Warranty & Service	14

Introduction

LCG System would like to thank you for your purchase of the L-280. With an impressive design and a highly quality control production, L-280 of LCG System surpasses the industry's standard for performance and comfort.

With LCG L-280, you can be assured of an uncompromised cleaning standard and safe pipe-less technology; Pipe-less jet features a convenient, removable screen plate for easy cleaning. You will be pleased with our world-class massage chair; a full function massage system includes kneading, tapping, rolling system that provide your clients with the ultimate relaxing moment. All parts in L-280 are made to the highest safety standard.

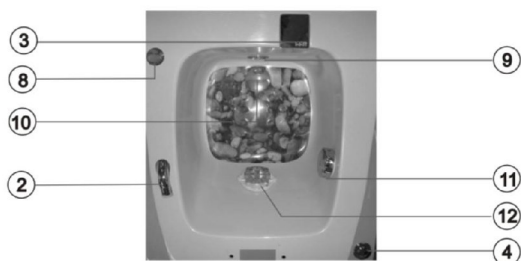
With minimal maintenance and care, your LCG L-280 will give you years of carefree service.

Specifications:

. Dimension: (with seat back)	54" L x 26" W x 53" H
. Net weight:	240 Lbs
. Shipping weight:	290 Lbs
. Capacity of tub:	5 US gallons
. Spa Base:	Fiber glass with steel frame
. Power source:	120V AC/ 12 Amp 60 Hz



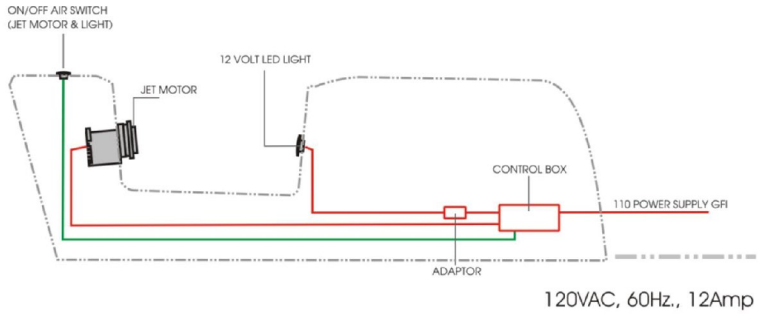
Identifying the part.



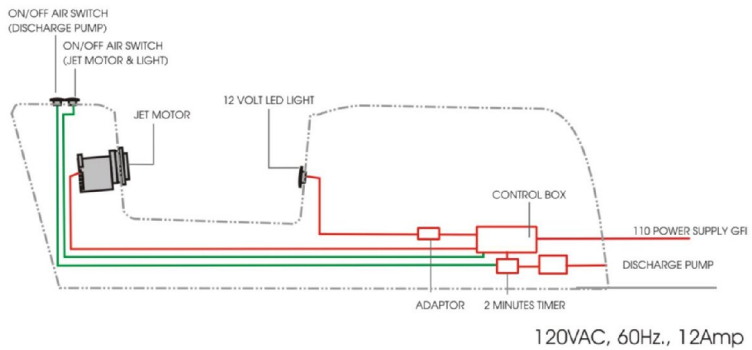
1. Chair with massage system
2. Hand shower
3. Water spout
4. On/Off Air Switch
5. Massage & recline control
6. Hot & Cold mixing valve

7. Adjustable footrest
8. Air control
9. LED light
10. Drain plug
11. Drain control Knob
12. Jet motor

Electric wiring diagram- w/o Drain pump



Electric wiring diagram- with Drain pump (optional)



Spa Installation Instruction:

Electrical Service

An 120 V, 60 Hz, 12 Amp GFCI protected grounded circuit must be used to supply power to the LCG L-280. The Service must performed by qualified licensed electrician.

Water Supply

All plumbing connections must conform to local codes.

For the state of MA: proper backflow protection shall be installed.

Hot water supply temperature

The hot water supply temperature must not exceed 120 degree F (48 degree Celsius).
Adjust your hot water heater accordingly.

Hot and Cold water supply lines

Carefully connecting the incoming water supply lines to the appropriate hoses locate on the back of the LCG L-280. It is recommended to shut off valves during installation.

Massage chair assembly: *(See details in chair user's manual)*



Drain line Installation:

Warning

The Spa must be installed by a qualified, licensed plumber. Failure to comply may result in serious injuries and Warranty will be voided.

- Gravity drain:

LCG L-280 uses a standard gravity drain. A floor drain is the recommended P-Trap is supplied.

- Discharge pump: (Optional)

Discharge pump is installed by manufacturer

Safety instruction

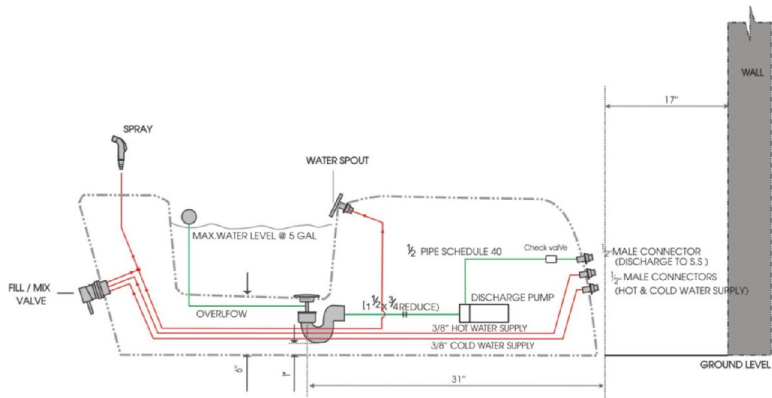
Caution: Basic precaution should always be observed, including the followings:

Those with the following conditions, but not limited to, should consult with their physician prior to using this product.

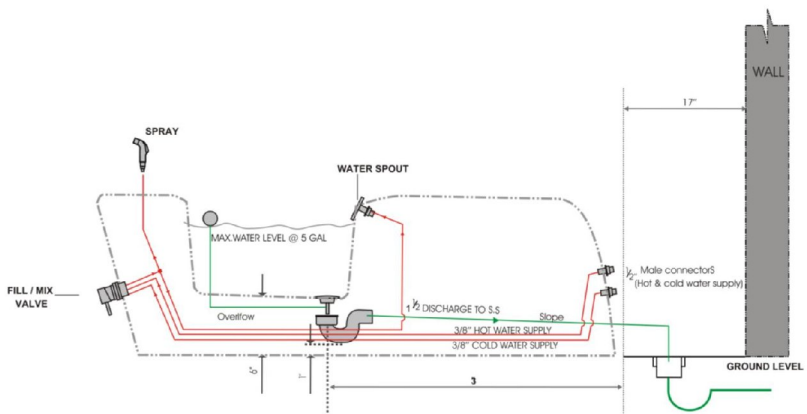
- A - Malignant tumor
- B - Heart disease
- C - Conditions requiring rest
- D - Back disease or back trouble from injury by accident.

- Always enter and exit the pedicure spa slowly and carefully.
- Do not permit children to use this unit unless they are supervised at all time.
- Do not use outdoors
- Do not use this unit if abnormal sound is heard.
- Make sure all operation switches are in OFF position before connecting the power cord to an electrical outlet.

Pump Drain Installation (optional)



Gravity Drain Installation



Health risk warning

Individuals whose feet or legs are inflamed or have open wounds should not be allowed to use the pedicure spa at any time. Nail technicians should advise clients to consult their physician before using the pedicure spa if there is any sign of fungal infection, swelling, fracture, or persistent pain. In some cases diabetics may experience improved circulation in their feet, but should first consult their physician prior to receiving a pedicure. The client's massage and pedicure spa experience should be pleasant and comfortable.

Warning

Grounding instructions and methods:

We strongly recommend that all outlets connected to the pedicure spas to include a GFCI device (Ground Fault Circuit Interrupter) in order to reduce the risk of electric shock.

In the event of break down or malfunction, the grounding provides a part of the least resistance for electrical current to reduce the risk of electric shock.

Operation and use

1 - Fill Sink:

Your LCG L-280 is provided with a single hot and cold mixing valve, located on the Front Center of the Spa. This is a pressure balance valve that requires you to lift the handle to start the water flow and turn the valve to the temperature level desired. Fill water until the jet motor is completely submerged.

2 - Start Whirlpool

Press ON / OFF power button, located next to the footrest, to launch the jet motor and Spa light. To stop the whirlpool function, press the button again.

3 - Adjust air control

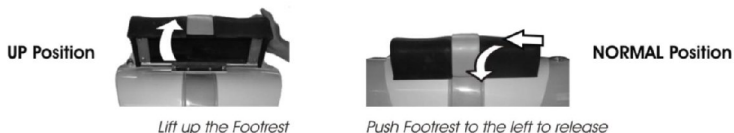
The air control button is situated on the Spa base, just under the chair. You can control the supply of air to the jet motor by turning this chrome knob in a clockwise direction.

4 - Hand shower

The LCG is equipped with a hand-held sprayer, located under or to the right of the footrest. To activate the hand shower pull the hand shower, lift handle of hot and cold mixing valve and depress the thumb control on the sprayer handle.

5 - Adjust footrest

LCG allows you to adjust the height of the footrest by lifting its front end up. To have the footrest back to normal position, push the footrest side way. (See picture below).



6 - Drain whirlpool sink

A - Gravity Drain

Open the drain plug by turning the control knob on the right of the spa tub.

B - Discharge pump (Optional)

Open the drain plug by turning the control knob. Press discharge pump button, located on front side of spa base.

7 - Massage chair

Please see chair User's Manual for operation and use of the chair

Cleaning & Maintenance

Pedicure Spa owner should always contact your local governing agency for their specific cleaning, disinfecting requirements and regulations for pedicure spas. For your clients safety, always use the regulations as a minimum standard for cleaning and disinfecting. Combining your state's standards with the regimen listed below may provide your clients with a safe and healthy pedicure spa environment experience.

See Exhibit A for the completed list of state board contacts

Below is the recommended Cleaning and Disinfection Procedures for Foot Spa Basins in Salons by Environmental Protection Agency (EPA) - December 2006

Customer precautions - protecting the client

1. **Check the condition of the client's feet and legs:** If open sores or skin wounds are present (including insect bites, scratches, scabbed-over wounds, or any condition that weakens the skin barrier), explain to the client why they should not use the foot bath.
2. **Complete pedicure or wax after the foot bath soak:** Any procedure that risks damage to a client's skin should not be done before soaking feet in the foot spa basin.

Step by step instructions for disinfecting pedicure foot spa equipment

After Each Client: (this can take place any time after the client's feet are out of the footbath, while feet are massaged, toes are painted, or other opportunities)

1. Drain the water from the foot spa basin or bowl and remove any visible debris.
2. Clean the surfaces of the foot spa with soap or detergent, rinse with clean water, and drain.
3. After cleaning, disinfect* the surface with an EPA-registered hospital disinfectant (for description) according to the manufacturer's directions on the label. Surfaces must remain wet with the disinfectant for **10 minutes or the time stated on the label**, which may be shorter.
* For whirlpool foot spas, air-jet basins, "pipe-less" foot spas, and other circulating spas: It is best to disinfect by filling the basin with clean water, adding the appropriate amount of liquid disinfectant, and turning the unit on to **circulate** the disinfectant for the entire contact time.
4. After disinfection, drain and rinse with clean water.

Nightly:

* For whirlpool foot spas, air-jet basins, "pipe-less" foot spas, and other circulating spas:

1. **Remove** the filter screen, inlet jets, and all other removable parts from the basin and clean out any debris trapped behind or in them.
2. Using a brush, **scrub** these parts with soap or disinfectant (following cleaning directions).
3. **Rinse** the removed parts with clean water and place them back in to the basin apparatus.
4. **Fill** the basin with clean water and add an **EPA-registered hospital disinfectant**, following label directions. Turn the unit on and **circulate** the system with the liquid for 10 minutes, or the label- indicated time if different. (The whirlpool mechanism of the tub must be operating for the entire disinfection period so the piping and internal components that contain hidden bacteria are disinfected).
5. **After disinfection, drain, rinse, and air dry.**

* For simple basins (no circulation):

1. **Drain** the basin and remove any visible debris.
2. **Scrub** the bowl with a clean brush and soap for disinfectant (following cleaning directions). **Rinse and drain.**
3. Disinfect basin surfaces with an **EPA-registered hospital disinfectant**, following manufacturer's instruction. Surfaces must remain wet with the disinfectant for 10 minutes or the contact time stated on the label.
4. **Drain** the basin, **rinse** with clean water, and let air-dry.

Important additional measures

- * **Follow your state guidelines and regulations:** Some states require a weekly flush of the whirlpool mechanism with bleach and that the bleach remain in contact for over eight hours. Salons should consult state cosmetology regulations to make sure they are in compliance.
- * **Read all labels and instruction manuals:** Always follow label directions for disinfectant products, and consult operating manuals for foot spa basins. Care should be taken to use appropriate doses of products to prevent damage to foot spas.
- * **Know the condition of your equipment:** If your whirlpool foot spa has not been regularly cleaned and disinfected, you may need to do more than just the maintenance steps listed above to remove bacterial buildup from the system. Consult the foot spa manufacturer for further information. A higher level EPA-registered disinfectant, such as those labeled "Tuberculocides," may be used initially (refer to the listing of these products on the [List B: EPA Registered Tuberculocide Products Effective Against Mycobacterium tuberculosis \(PDF\)](#) (33pp, 167.1 KB). Once the system has been adequately disinfected, regular maintenance with cleaning and use of a hospital disinfectant, as described in this document, may be used.

NOTE:

Cleaning or sanitizing is NOT disinfecting. According to the Centers for Disease Control and Prevention (CDC), and the US Environmental Protection Agency (EPA), disinfecting occurs only when there is a reduction of pathogenic microbes at 99.000%. Sanitizing is only a reduction of 99.9%. Cleaning of whirlpool pedicure spas requires surfactants and chelating detergents that are low-foaming and have the ability to remove body oils, organic oil additives, mineral oil, skin cells, nail clippings etc that can accumulate both in the basin and the jets which may become a fertile are for micro organisms grow.

The use of oil based products can build up in the whirlpool system causing clogging in the jets. Adherence to the above cleaning will minimize build up. Spa Zi does not recommend the use of mineral oil based products.

Disclaimer:

LC Corp recommend that all salon owners must follow the most restricted guideline of the EPA and/or the local governing agency on sanitation and disinfection to protect his/her customers'health. Because health risks and infections are depended on the sanitation and disinfection measurements taken by the salon owner, of which LC Corp does not have any control; Therefore, LC Corp is not responsible for this matter.

Warranty & Service

Purchasers MUST mail in Registration Form in order to have the warranty to be effective.

LCG warrants to the original purchaser that the new pedicure spa will be defect free during the Standard Warranty Period (listed below). The shipping date and the unique Serial Number on the back of each spa will justify the start of the warranty period for the product. The warranty is null and void if the pedicure spa is taken from its initial place of installation, or it is not installed in accordance with federal, state or local codes and ordinances. Also, this warranty does not apply if the pedicure spa has been subject to misapplication, improper installation or maintenance, negligence, improper cleaning or other circumstances beyond LCG's control.

Warranty

1. Limited one Year warranty on Spa Shell.
2. Limited One Year warranty on the Jet motor.
3. Limited One Year Parts-Only warranty which covers the Hydraulic System, Discharge Pump, Massage System and All Electrical Components.
4. LCG will pay shipping charges on all replacement parts during the first 90 Days of the Warranty Period. After 90 days, the consumer is responsible for all labor and shipping costs incurred.

Exclusions

1. Damage to pump parts and/ or motor parts due to obstruction in plumbing lines etc.
2. Staining, fading or discoloration of fiber glass surfaces due to exposure and / or the use of harmful cleaning agents or chemicals.
3. Staining, fading or discoloration caused by improper or poor water additives not related to the maintenance of proper water are not covered by this warranty.
4. Staining, fading or discoloration of the seat, armrests or footrests.
5. Freight damage without stating on BOL, misuse, neglect, unauthorized repairs, accident, natural disaster and unreasonable use.

Service

1. The Dealer shall forward all warranty-related matters to our Customer Service Department.
2. Serial Number and Original Invoice must accompany all warranty claims.
3. Customers are responsible for shipping defective parts back to LCG. These parts must be packaged correctly in order to protect against any further damage.
4. All parts are to be shipped by UPS Ground Service - average 2-5 days.
5. All defective parts must be shipped back to LCG within 30 days of receiving the new replacement parts or warranty will be void.
6. Warranty claim will not be honored if Registration form is not received by LC.
7. Any service performed on the product without LCG authorization will also void the Warranty.
8. Each service call from the customer will be assigned a Claim Number. The Claim Number will stay open until the problem is resolved.