

EPISODE SPA

Owners Manual



Tables of contents

Introduction	-----1
Consideration	----- 2
Connection	----- 3
Installation	----- 4-6
Specification	----- 7
Operation	----- 8
Massage system	-----9
Maintenance	----- 10
Trouble shooting	----- 11-13

Warranty

EPISODE

----- 14

**All electrical and plumbing components are
in compliance with the following :**



Quality Components Install

Warning

Prior to installation you MUST have a Qualified, licensed electrician and plumber to install Episode spa safely. Failure to do so may result in serious injury and/or death due to improper installation of electric equipment and /or plumbing parts. In addition, Warranty will be null and void, J&A USA Inc will not be responsible for the injuries and/or death resulted by improper installation of the unit/s.

Introduction

Congratulations on your purchase of the most innovate Episode pedi - spa .You just have become the owner of the finest pedicure spa in the spa industry. It is strongly recommended that you read and follow the instructions carefully prior to installing and using the spa. Once installed, we here at J&A USA Inc, are confident that you ll be entirely satisfied with decision that you ve made. Our after - sale service will further extend your satisfaction throughout using Episode pedicure spa. Our designing and engineering staffs interrelated to make Episode to be perfectly suitable for the professional and customers.

Important Installation Considerations

Electrical Service

A 110V, 60 Hz, 15 Amp GFCI protected grounded circuit must be used to supply power to the Pedicure spa.

Water Supply

Water supply to the Episode pedicure spa should consist of a system that will provide both adequate water pressure and water temperature. All plumbing connections must conform to local codes.

Water Pressure

Normal water pressure of 30 to 120 P.S.I is required to correctly fill the tub to the proper level.

Water temperature

The hot water supply should never exceed 100 F. Be sure your water heater in your facility is set accordingly.

Back Flow Prevention Device

The hand held sprayer does not have a back flow prevention device. You are required check your local plumbing codes to see if a back flow prevention device is required.

Drain Facilities

Connect the Episode Spa drain to meet local plumbing codes .Please refer to the installation drawings.

Episode Spa must be securely fastened to the floor

Fastened the unit with at least two fasteners.

Installation Summary

The installation must comply with local, state, and national building, plumbing and electrical codes, where applicable. A licensed plumber should complete the plumbing of the Episode spa. Electrical wiring must be completed by a licensed electrician.

Note: The Failure to comply with federal, state or local codes and ordinances will result in warranty being null and void.

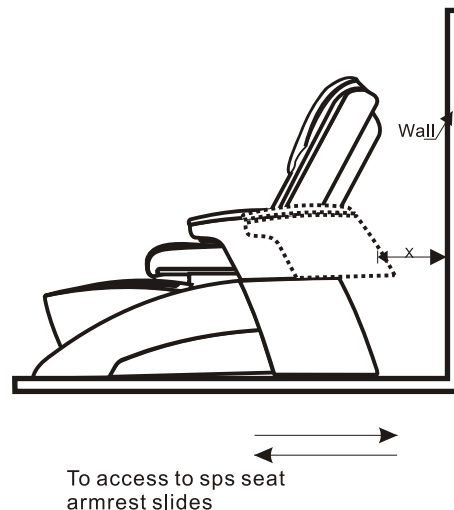
Location and support

Select a level location where the floor structure beneath the episode spa is capable of supporting the spa.

For the seat back to fully recline the spa base must mounted a minium distance from the wall.

Episode ----- 12 In.
Episode with full recline ----- 22 In.

Please refer to installation drawings.

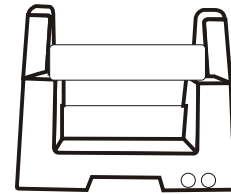


Plumbing Connection

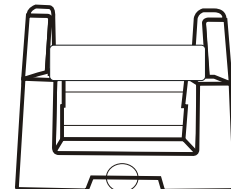
All plumbing connections should be made by qualified, licensed plumber in accordance

Hot and Cold Water Supply

Carefully connect 0.5 in. supply tubes to fresh water source. Shut off valve should be utilized.



Easy connection to water supply line



Easy access panel to connect drain

Drain Connection

Using 1-1/2in.schedule 40 PVC drain pipe and appropriate trap, connect drain to meet local plumbing codes

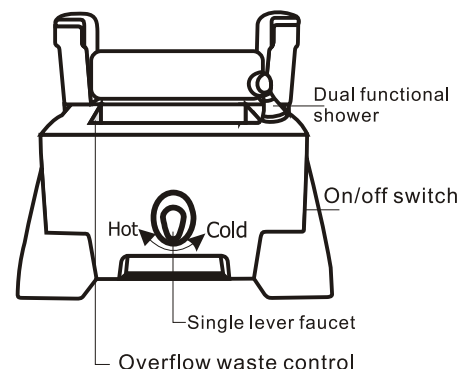
Electrical Connections

The Episode spa must plugged into a GFCI protected outlet. A licensed electrician install the outlet and can also be hard wired direct with dedicate line for each unit.

Testing the episode spa

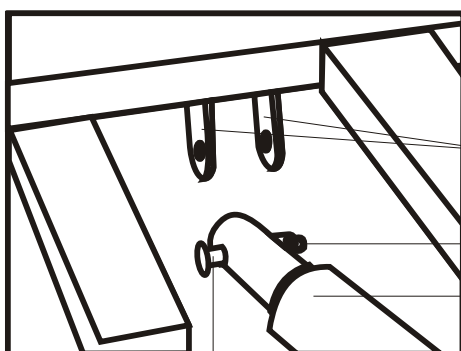
After the plumbing and electrical connections have been made and the units been secured to the floor, Clean the tub and fill the water up to its level.

When the tub is filled with water, turn the switch on the right side of the unit to activate the whirlpool pump. Water should coming out of the jets, Check for leaks at the drain overflow and all pipes and fittings. After checking under the tub for leaking, use same switch to turn off the whirlpool pump and drain the tub basin by turning the overflow waste control.

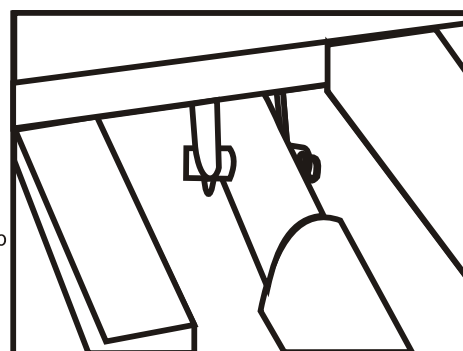


Attachment of the back seat

Your Episode shipped with seat bottom and seat back already attached to the base. However, you must attach the support arm bracket to the seat back motor arm using supplied clevis pine and hitch pine clip.



Support arm bracket
Hitch pine clip
Seat back motor arm
Clevis pine



BACK FLOW PREVENTION DEVICE (DUAL CHECK VALVE)

June 15, 2005

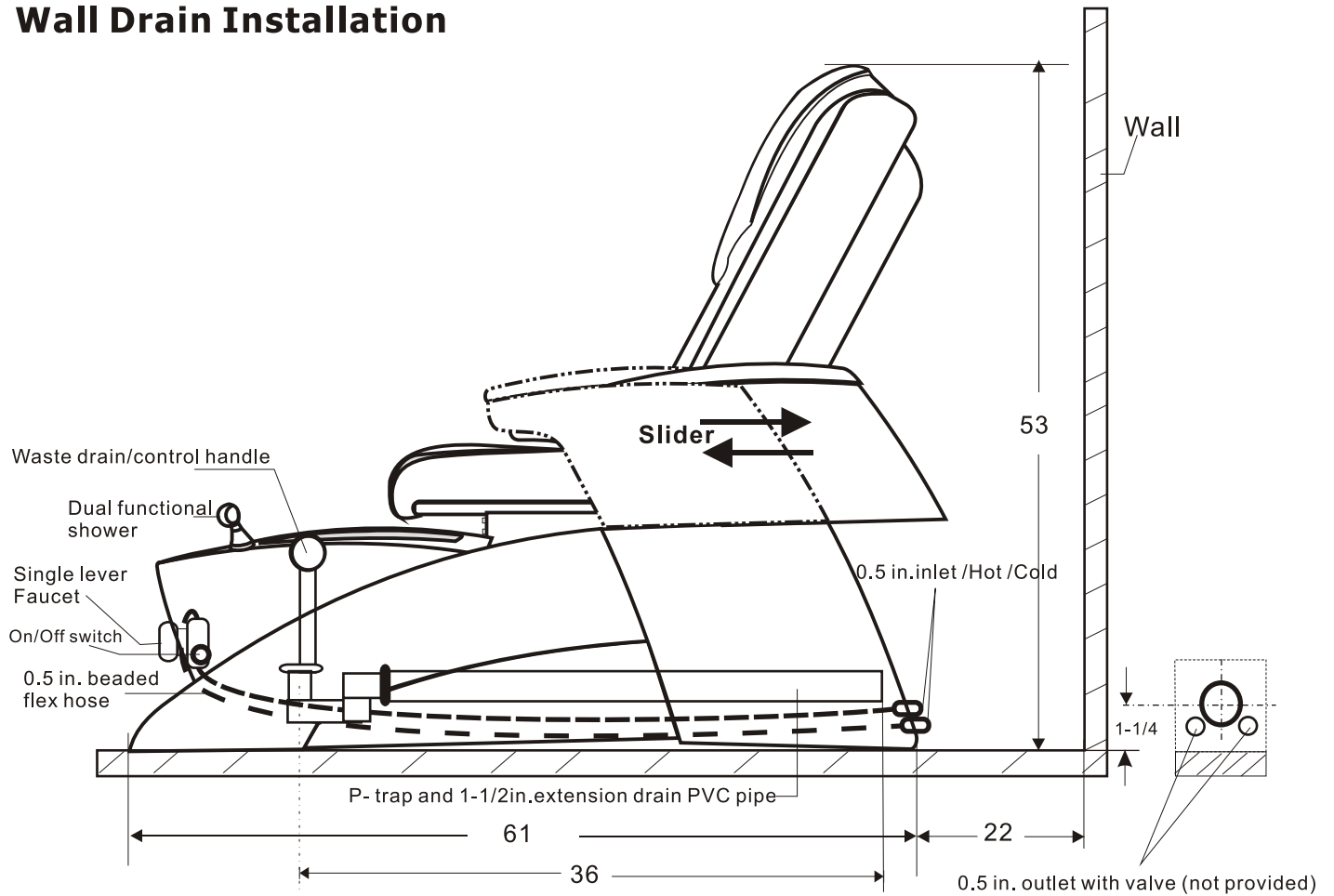
In accordance with applicable Local or State Regulations,
J&A USA, Inc., the manufacturer of the pedicure whirlpool spa Certifies that
the following models are equipped with factory installed Dual Check Valve
Back Flow Preventor:

- ▶ CLEO,
- ▶ EPISODE,
- ▶ PACIFIC,
- ▶ PETRA, and
- ▶ TOEPIA collections

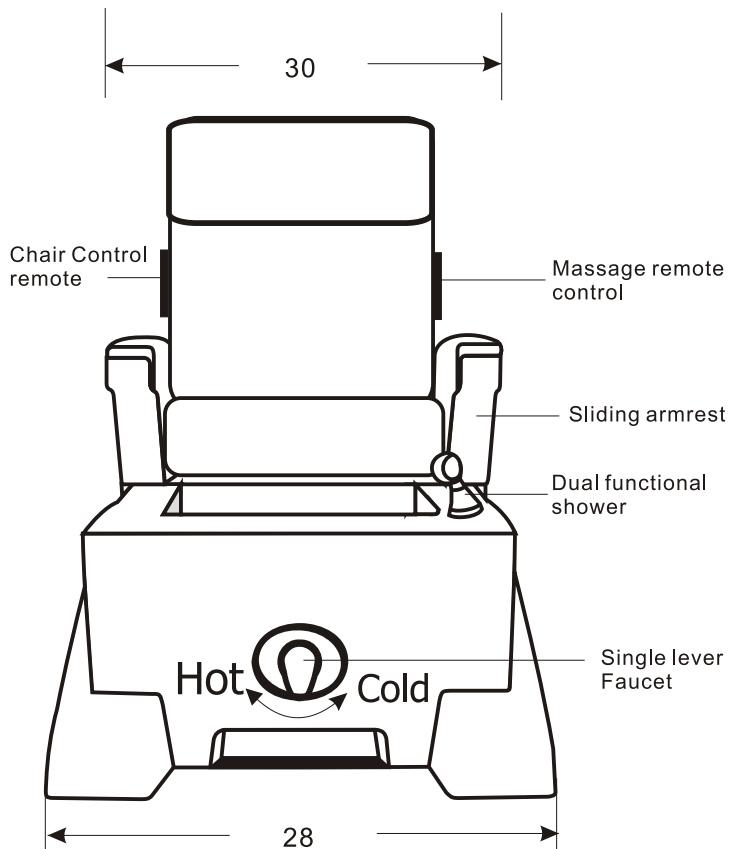
The specification of the installed device is as follows:

DEVICE NAME	DUAL CHECK VALVE BACKFLOW PREVENTOR
DEVICE MANUFACTURER	WATTS REGULATOR COMPANY, NORTH ANDOVER, MA
DEVICE MODEL	WATTS 3/8" 7, 7C and 3/4" H7, H7C
DEVICE SPECIFICATION	Tested and certified to meet ANSI/ASSE standard 1024. CSA certified to standard No. B64.6
DEVICE PRESSURE	MAXIMUM PRESSURE: 150psi (10 bar) MINIMUM PRESSURE: 10psi (69 kPa) MAXIMUM RECOMMENDED FLOW: 10 gpm
DEVICE TEMPERATURE	WORKING TEMPERATURE: 33 °F ~ 144 °F constant; intermittent to 180 °F

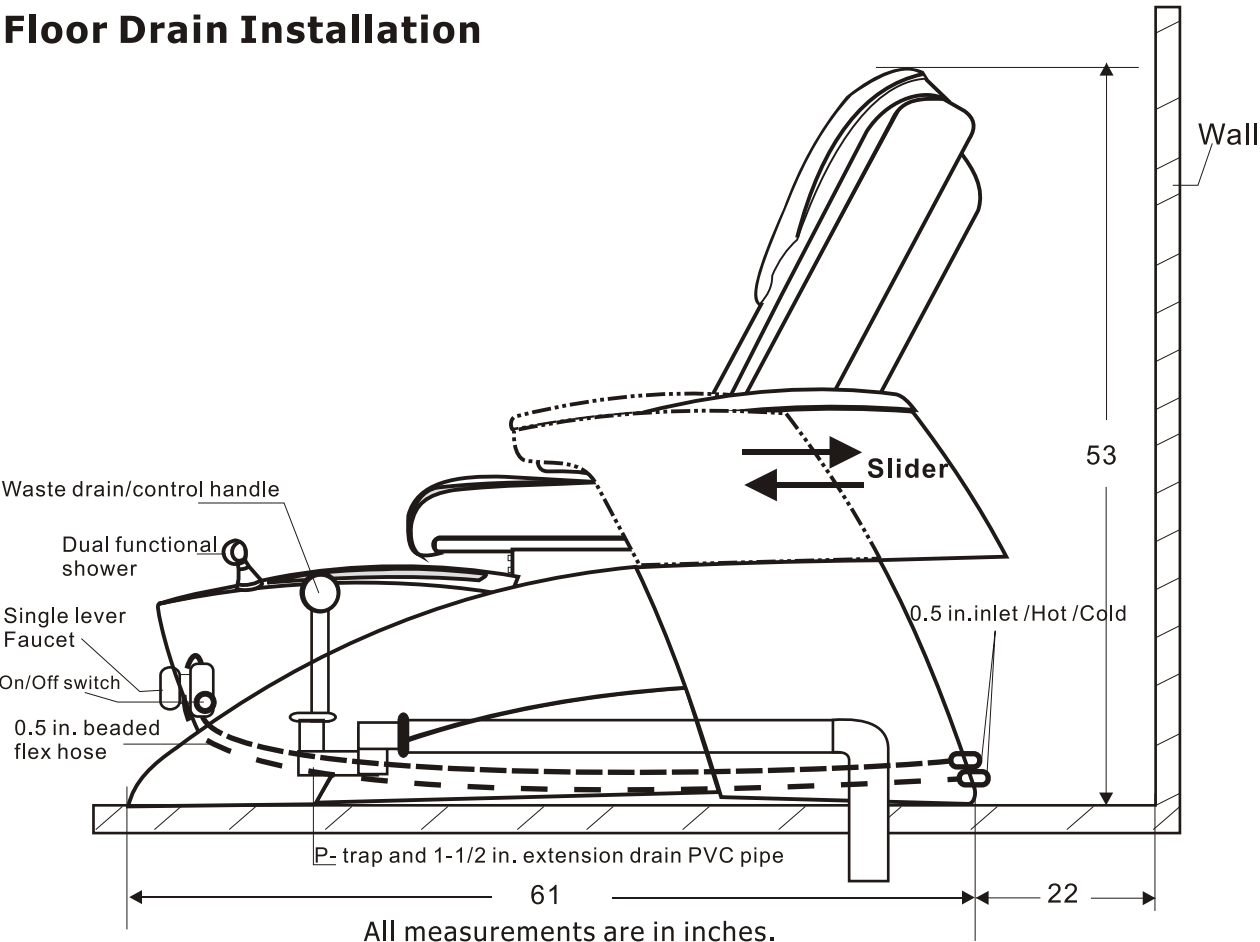
Wall Drain Installation



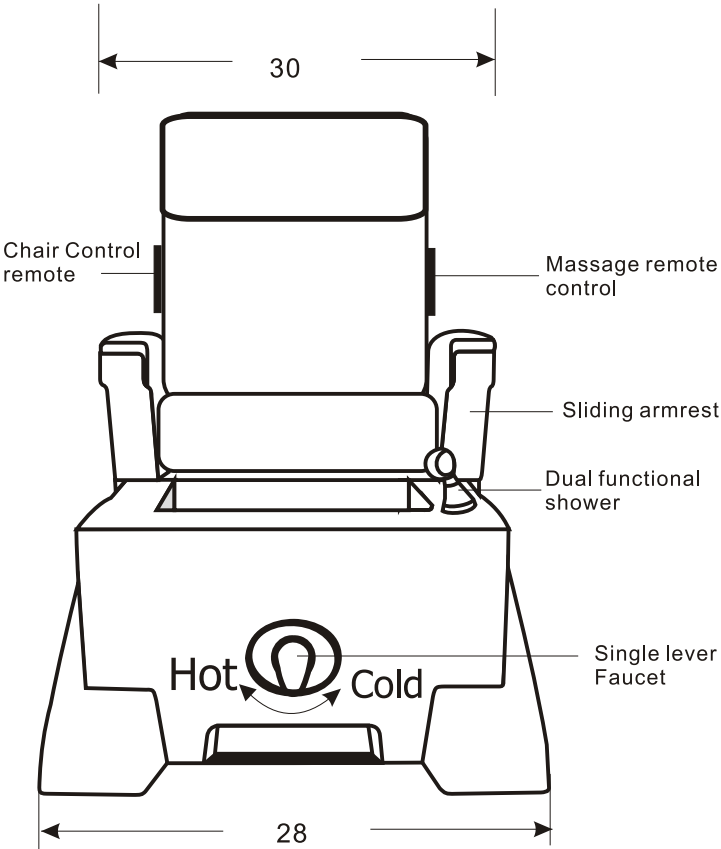
The Manufacturer strongly recommended installing vacuum breaker (NL - N9 or N9) by licensed plumber



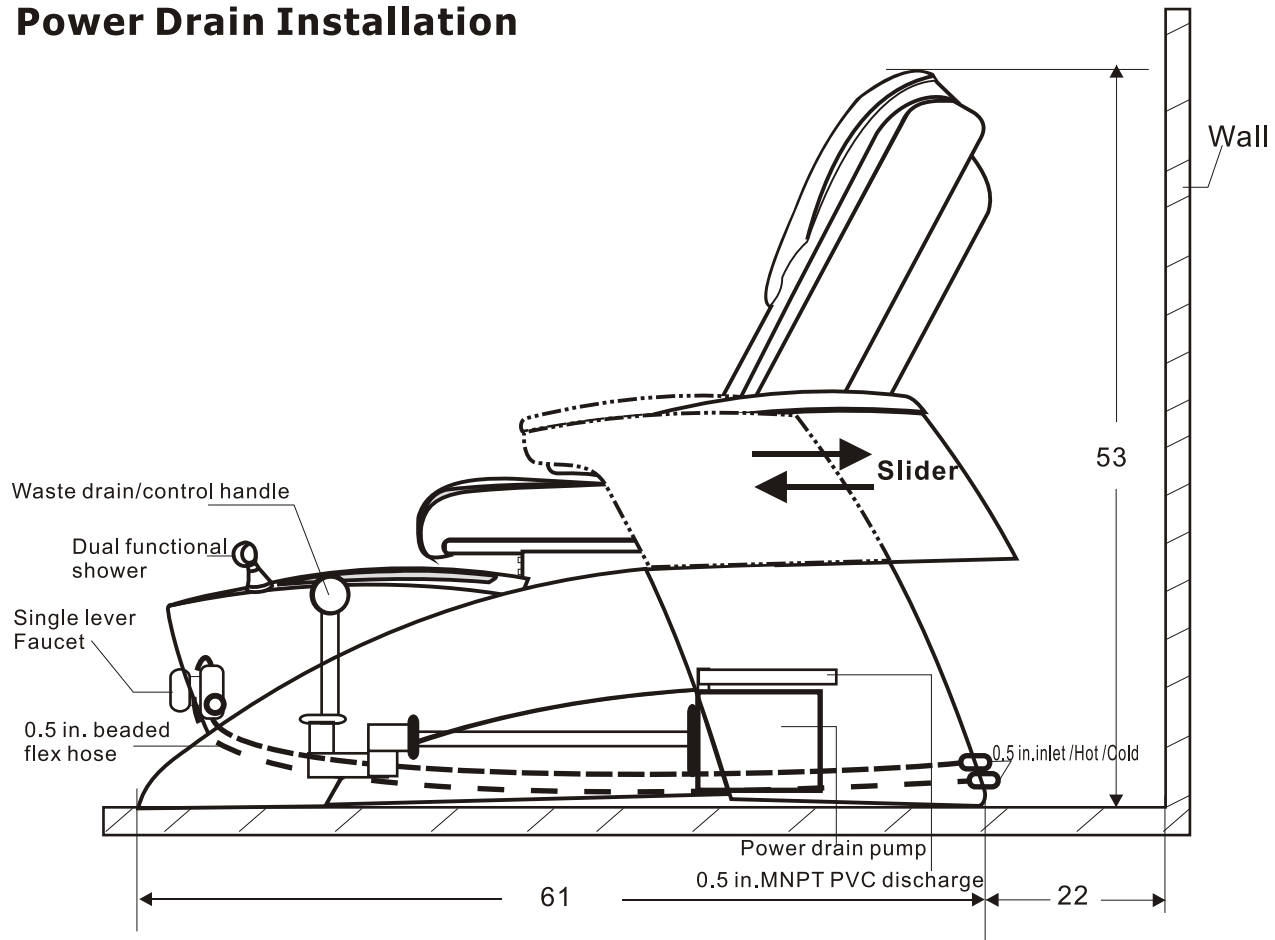
Floor Drain Installation



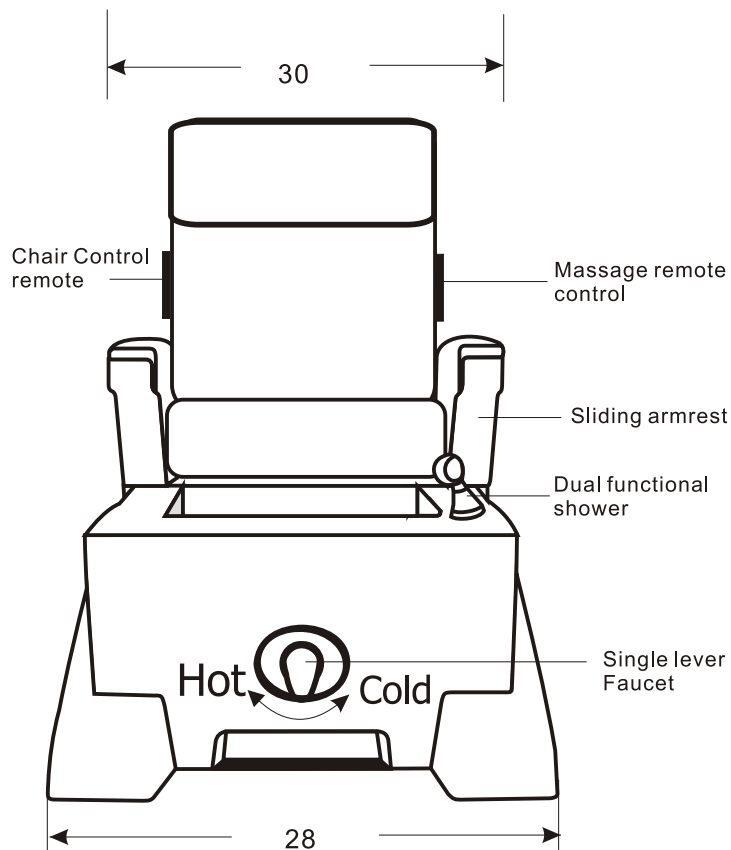
The Manufacturer strongly recommended installing vacuum breaker (NL - N9 or N9) by licensed plumber



Power Drain Installation

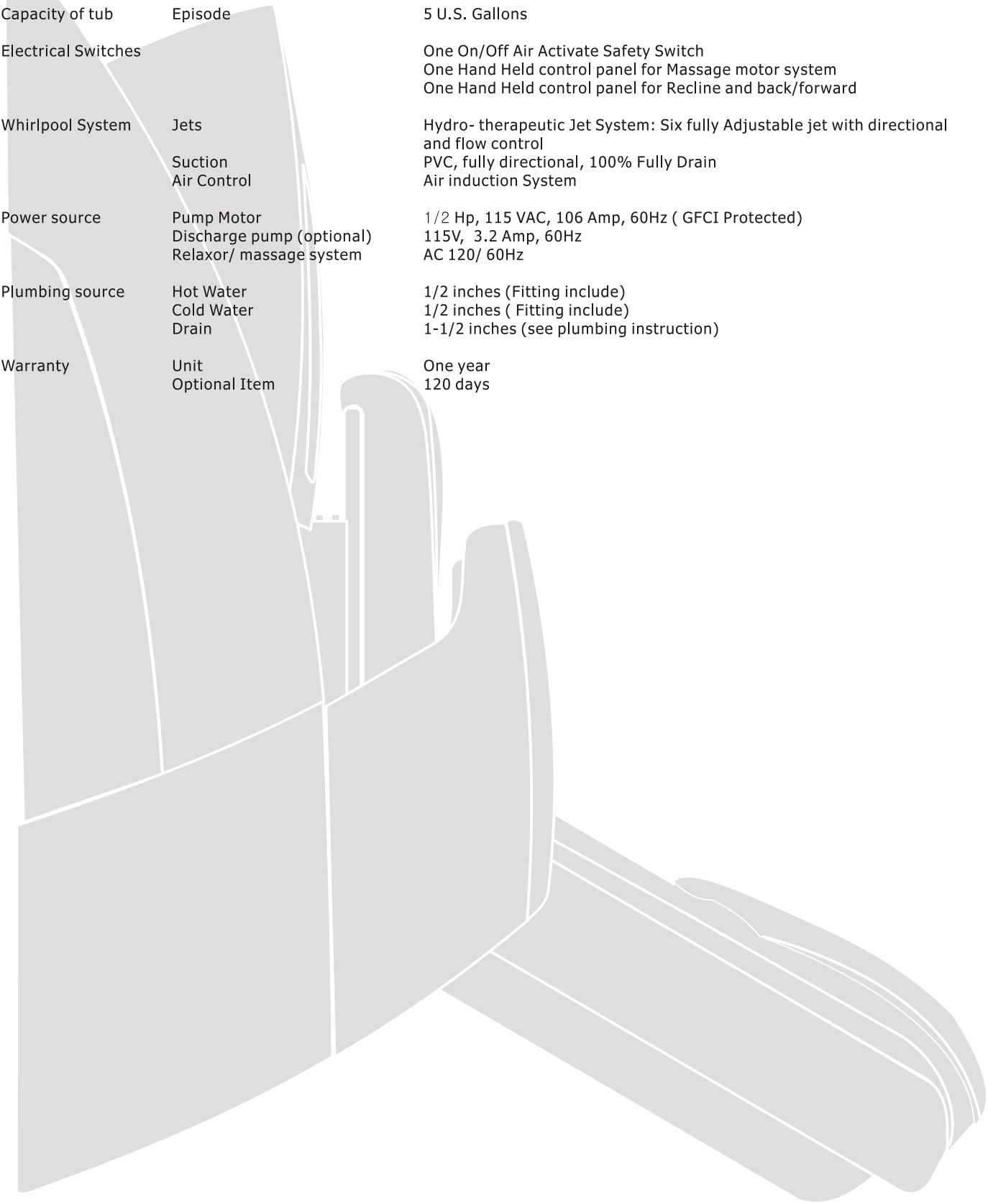


The Manufacturer strongly recommended installing vacuum breaker (NL - N9 or N9) by licensed plumber



Episode Whirlpool pedi - spa Specification

Dimension & Weight (In inches)	Episode pedi-spa Stool	61 L x 28 W x 53 H, 197 lbs, Shipping wt.:250lbs 20.5 L x 16.5 W x 17.5 H, 17lbs
Capacity of tub	Episode	5 U.S. Gallons
Electrical Switches		One On/Off Air Activate Safety Switch One Hand Held control panel for Massage motor system One Hand Held control panel for Recline and back/forward
Whirlpool System	Jets Suction Air Control	Hydro- therapeutic Jet System: Six fully Adjustable jet with directional and flow control PVC, fully directional, 100% Fully Drain Air induction System
Power source	Pump Motor Discharge pump (optional) Relaxor/ massage system	1/2 Hp, 115 VAC, 106 Amp, 60Hz (GFCI Protected) 115V, 3.2 Amp, 60Hz AC 120/ 60Hz
Plumbing source	Hot Water Cold Water Drain	1/2 inches (Fitting include) 1/2 inches (Fitting include) 1-1/2 inches (see plumbing instruction)
Warranty	Unit Optional Item	One year 120 days



Due to continuous improvements on all our product, All specifications, characteristics, packing, colors, design are subject to change without notice.

OPERATING THE EPISODE SPA

Getting Start

- Turn the drain handle and make sure the drain plug is closed.
- Faucet handle should be up position and sway left to right for temperature control.
- Water level should 1 in. above the suction cover.
- Push the air button (on/off switch) to start the whirlpool.
- Adjust jets for flow direction.
- For intensifying the whirlpool by opening the air control

Caution

All jets must be fully open

To turn off

- Gently push the air button.
- Turn the drain handle and make sure the drain plug is up position.
- Thoroughly rinse inside of the tub.

Precautions

- Do not forcefully turn and/or push any control buttons.
- When filling the tub, the water level must be at least 1in. above the suction cover.
- The massage controller or any electrical device must kept away from the tub.
- Advise your clients to always be cautious when getting ON or OFF the pedi-cure spa.
- Always check the water temperature before clients put their feet into the tub.

WARNING

The use of the pedi-cure whirlpool is prohibited for clients who are diabetic or have poor circulation, or if any area of the feet legs are inflamed or open wound. The client who has any fungal infection, swelling, fracture or persistant pain should consult with a physician before using the spa.

Massage System

IMPORTANT SAFETY INSTRUCTIONS

Warning: To reduce risk of burns, fire, electric shock, or injury to persons

READ ALL INSTRUCTIONS BEFORE USING BURNS WILL RESULTS FROM IMPROPER USE NEVER REMOVE COVER OTHER THAN AUTHORIZE PERSONNEL FROM THE MANUFACTURER.

Close supervision is necessary when unit is used by, on ,or near children, invalids, disable persons.

Use this unit only for its intended use as described in this manual. Do not use any attachment/s not recommended by the MFG.

Keep the cord away from heated surfaces.

Do not use outdoors.

Do not operate where aerosol products are being use or where oxygen is being administered.

Never operate this unit if it has a damaged cord or plug., If it is not working properly, if it has been dropped or damaged, or dropped into water. To disconnect, press power button to turn off, then remove plug from outlet.

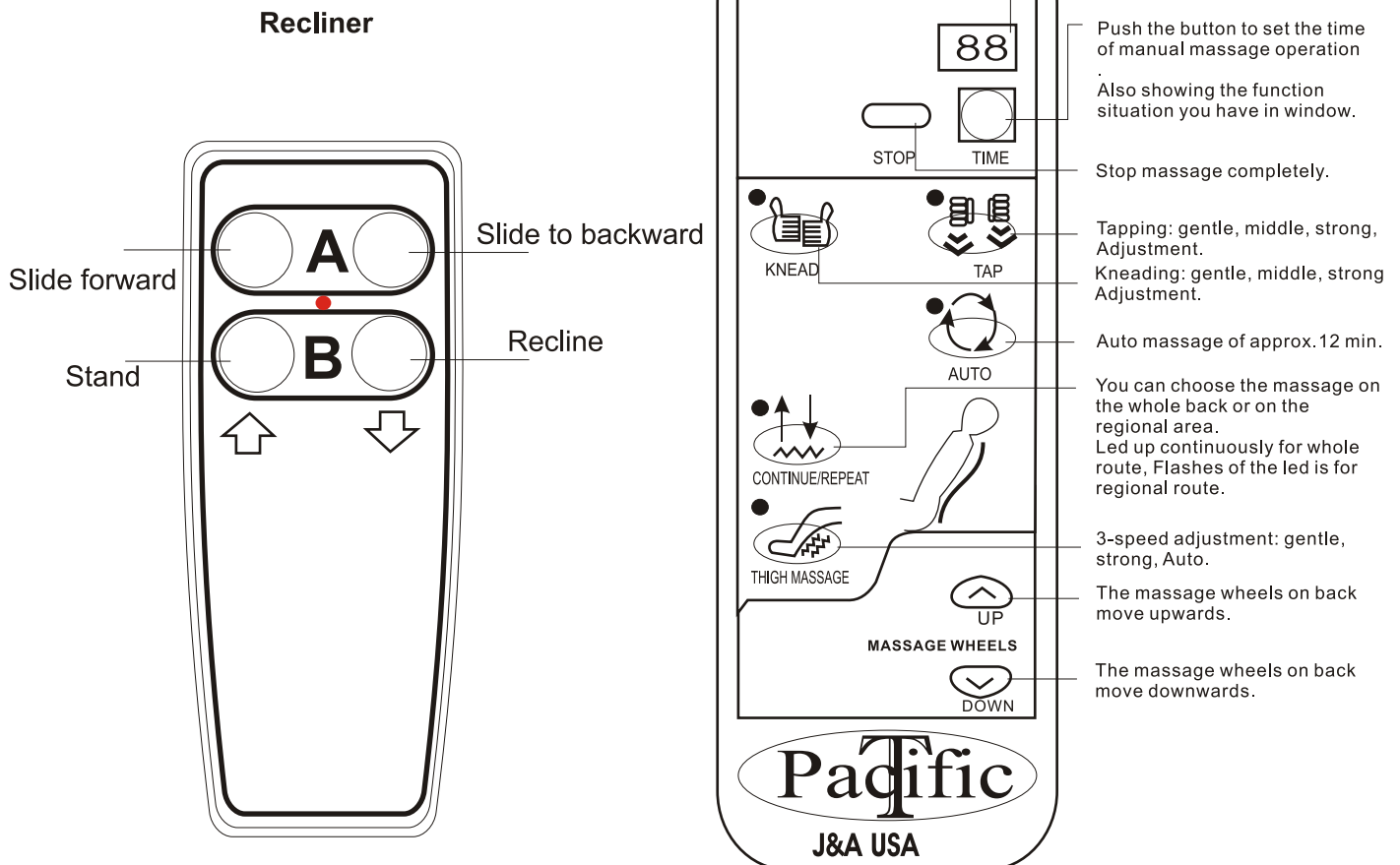
Take a break every 30 min. Operation.

Do not place any heavy object on the chair and do not let the children play with it.

Never operate the massage chair with any part immersed in water, or any heat source.

Hand held Remote Control Operations

Massage



Maintenance

- * Keep the screen on the suction inlet must be free of debris, any blockage of the screen reduces the whirlpool action and may cause damage to the whirlpool pump motor.

Cleaning / Flushing the inner whirlpool system

- * Fill up warm water up to its level.
- * Apply 3 tsp of low foaming dish wash detergent, 1 tsp of the regular bleach into the tub.
- * Start the whirlpool for 5 min. and let it still for 5 min. And run again for two min.
- * Drain out the water and fill up to its level with warm water.
- * let it run for 5 min. And drain out the water.
- * Wipe dry with soft cloth.

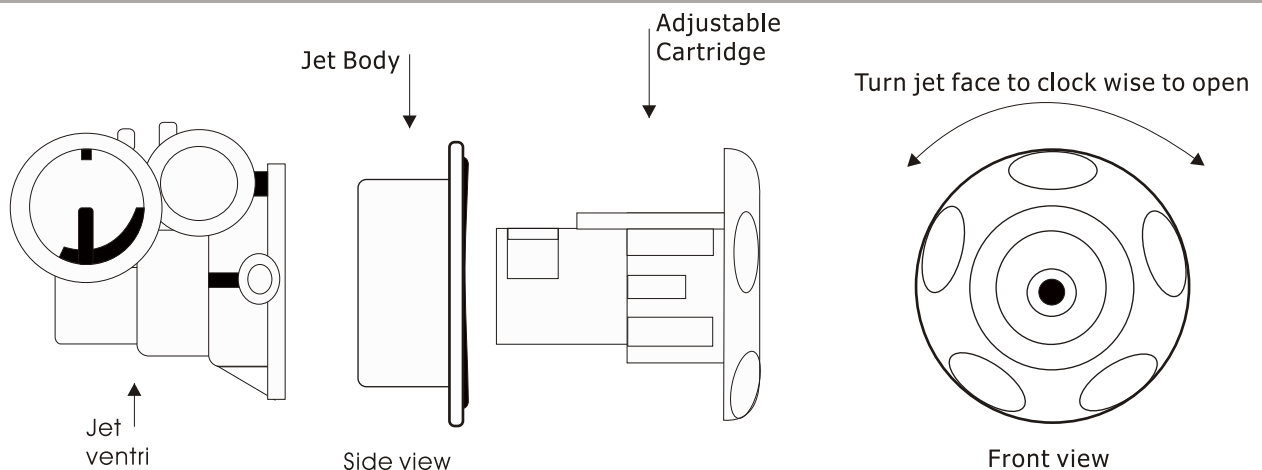
Recommendation

Inner whirlpool cleaning should be done two times a week , Do not exceed 14 days with out flushing out.

Warning

DO NOT use if you are diabetic, have poor circulation, or if any area of your feet or leg is inflamed or has been open wound. Please consult your physician before using, if you have any kind of fungal infection/s, swelling, fracture or persistent pain.

Assembly of the jet.



Assembly of the Jet

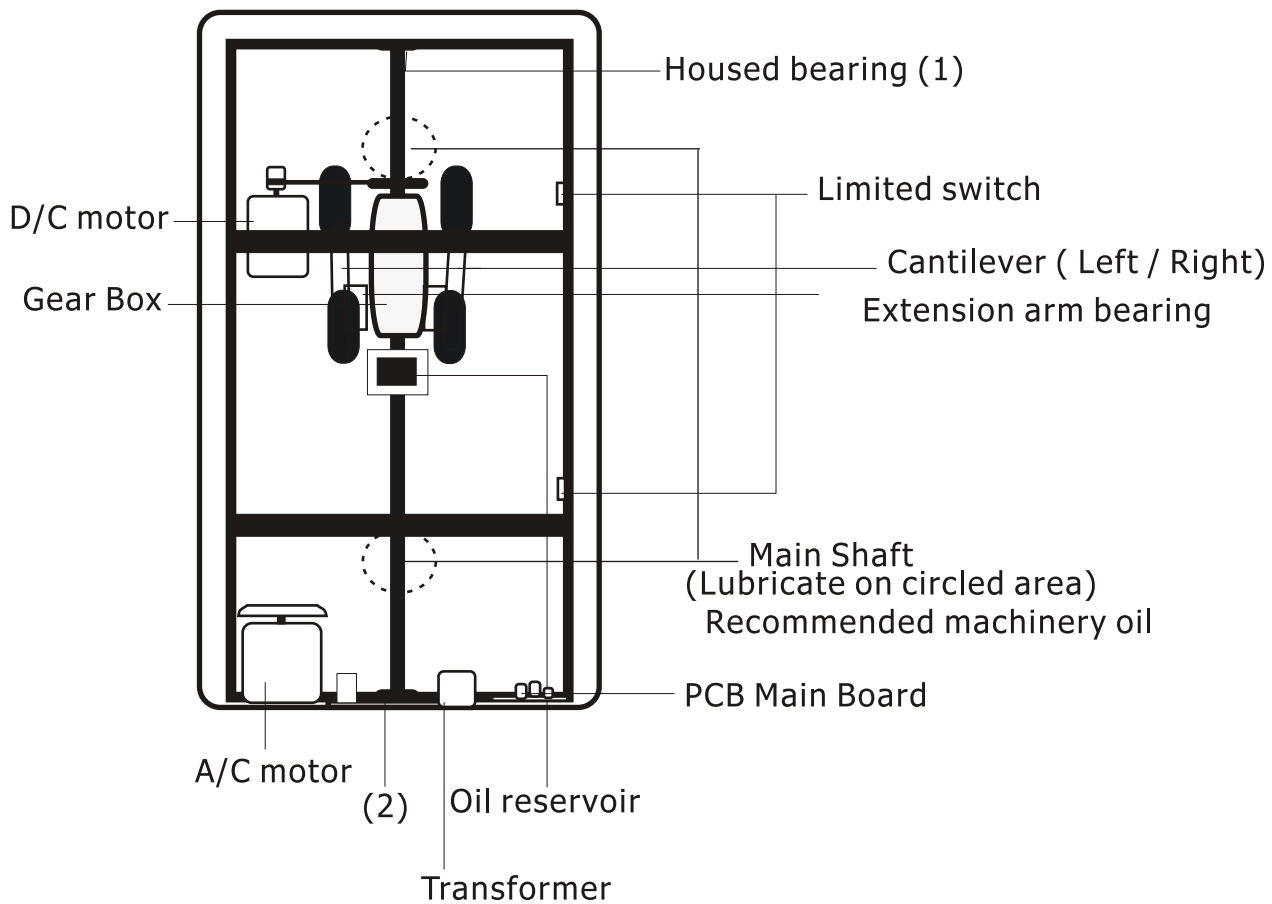
- 1- With jet ventri and jet body in position, insert the cartridge into the body and lightly press the jet face until the face clicks into position.
- 2- Use your finger to rotate the eyeball into position. If the assembly is seated, the eyeball will stay in the correct position.

Disassembly of th jet

Press the eyeball towards the ventri jet with your thumb. The eyeball will move freely when the spring is compressed. Using the fingers, Grasp the edge of the jet face and pry the face from the body. It will snap out.

Note: All jets must be open at all the time.

Maintenance



It is recommended by manufacturer, that You must lubricate main shaft at least once month, Depends on the usage of the chair.

It is vital to check quarterly , check lists as follow :

- 1- listen for noise, when roller goes up and down.
- 2- check if DC motor drive belt is loose.
- 3- check if all functions are in working order.
- 4- lubrication is a MUST, as manufacture recommended.

Depends on the usage of the chair, heavy user require to follow the simple check list. Often than regular user.

MULTI-COLOR LED SPA LIGHT

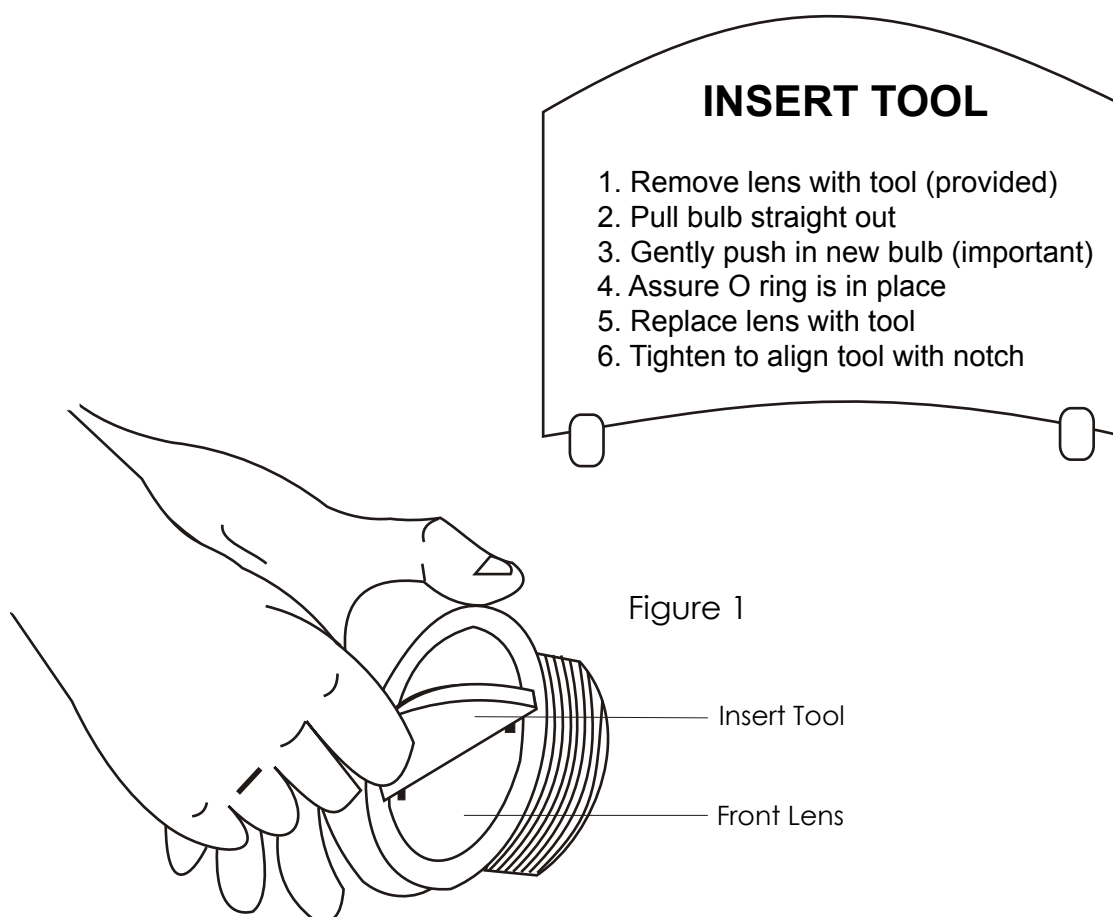
(Instruction for LED Bulb replacement)

WARNING: Risk of electric shock!!!,

- ☐ ☐ **Drain spa and disconnect power before attempting to open lens.**

Multicolor LED spa lights allows the replacement of the lamp from the front. It comes complete with a plastic insert tool for tightening, or un-tightening.

- NOTE: ☐ To change a bulb after installation,
- ☐ ☐ follow the instruction engraved on the lamp replacement too.
 - ☐ ☐ Insert the two tabs of the insert tool into the two notches on
 - ☐ ☐ the front lens of the light assembly
 - ☐ ☐ (counter-clockwise to REMOVE; clockwise to INSTALL)
 - ☐ ☐ See figure 1.



CAUTION

To reduce the potential risk of fire, electrical shock, or injury to persons:

- 1) All electrical wiring (both installation & repair) must be done by a licensed electrician and in accordance with local and state ordinances.
- 2) No modifications, additions or deletions should be made to the pump, without factory approval.
- 3) Before starting motor, fill tub with water to level recommended by whirlpool manufacturer. Never run pump dry!
- 4) Motors have a built-in automatic reset over load protector that guards against damage from mechanical or electrical problems such as low voltage, locked pump or similar abnormal conditions. Remember, if the timer device is still on, these motors will restart automatically - as soon as they cool down.
- 5) Do not relocate pump without prior approval from factory.

WARNING

- To reduce the risk of injury, do not permit children to use this product unless they are closely supervised at all times.
- To reduce the risk of electric shock, replace damage cord immediately. And Do not use extension cord to connect unit to electric supply;; provide a properly located outlet.

TROUBLE SHOOTING GUIDE

SYMPTOMS

Pump will not turn on

Pump runs slow.

Pump Humms.

Pump Humms but
Will not turn.

Noisy pump

Pump leaks.

Pump cavitates.

Pump runs but
No jet action.
.

PROBABLE CAUSES

No power to motor

Pump not wired same as voltage supplied

Something stuck in impeller.
Wire not tight..
Pump jammed.

Something in the pump.

Bad bearing.
Hose clamps or union loose.
Bolts holding tank loose.
Leak around shaft from worn seal.
Pump creeps.

Air from jets getting in suction

Air lock.

RECOMMENDED ACTION

Check switch and fuse or breaker, also connection from motor

To switch.
Change pump to correct voltage.

Take pump apart and clean impeller.
Check terminals.
Remove dust cap and rotate motor shaft with screwdriver.
If unable to turn, send in for repair.

Take pump apart and remove debris.

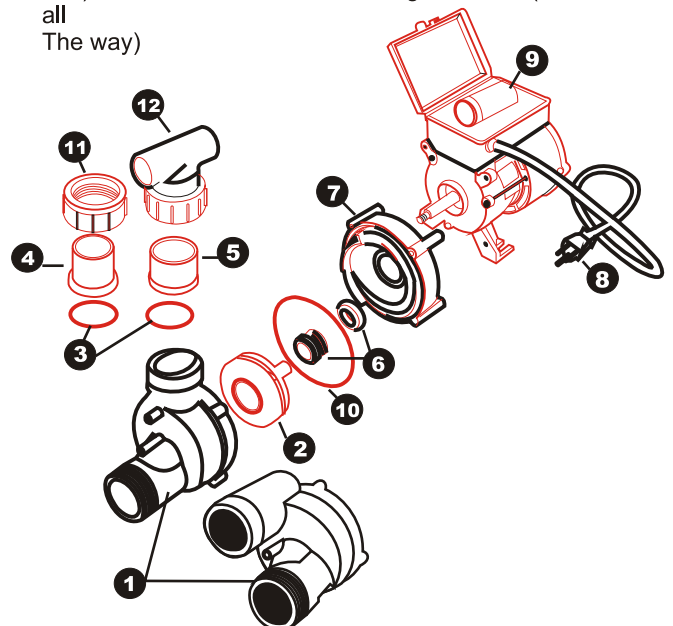
Replace Bearing.
Tighten.
Tighten
Replace shaft seal.
Secure pump to floor.

Direct directional flow fitting away from suction fitting.

Turn pump on, wait 10 seconds. Turn pump off.
Repeat up to 10 times. If airlock is not cure, try turn tee union #12 as shown in clock-wise and tighten back.(Do not turn all the way)

PUMP PARTS LIST

ITEM	PARTS#	DESCRIPTION
1	WWVF	FRONT VOLUTE
2	WWIMP	IMPELLER
3	UPUFO/R	UNION O RING
4	UPUFM	UNION MALE 1 1/2
5	UPUFF	UNION FEMALE 1
6	PPSSFSEAL	SEAL ASSEMBLY
7	PPWWVB	VOLUTE BACK
8	PPWWCORD	POWER CORD
9	MPASHU506	AIR SWITCH
10	PPWWVO/R	VOLUTE O RING
11	UPUFNUT	UNION NUT 1 1/2
12	UNUTEE	UNION TEE 1 1/2 X 1 X 1



J&A USA, INC. LIMITED WARRANTY STATEMENT

J&A Product: EPISODE, PETRA, TOEPIA, CLEO, PACIFIC SPA

J&A Accessories: Epi-Stool, Tri-Stool, _____

Duration of limited warranty: 1 year from date of purchase

Coverage on limited warranty: Parts & Labor

EXTENT OF LIMITED WARRANTY

J&A USA warrants that the J&A product and/or accessories specified above will be free from defects in materials and workmanship for the duration specified above. Which duration begins on the date of purchase by the customer (salon, spa). Customer is responsible for maintaining proof of date of purchase and manual booklet in order to initiate the warranty, the customer must send J&A Warranty Card in the manual booklet. Read carefully and return to J&A within 15 days from the date of purchase.

If J&A receives notice of a defective product during the applicable warranty period, J&A shall either repair or replace the defective parts at J&A's option. Replacement product may be either new or equivalent in performance to new. If J&A is unable to repair or replace, as applicable, a defective product covered by the J&A's warranty, J&A shall, within a reasonable time after being notified of the defect, replacement of equivalent purchased price for J&A product, accessories, or supplies. J&A shall have no obligation to repair, replace, or refund until the verification process by J&A is completed.

J&A's limited warranty is valid in US where the covered J&A product is distributed by J&A. additional warranty services, may be available from any authorized J&A service facility where the product is distributed by J&A or by an authorized importer.

J&A's limited warranty cover only those defects which arise as a result of normal use of the product, and do not apply to any:

- Improper or inadequate maintenance or modification
- Unauthorized modification or misuse
- Improper site preparation or maintenance

Any applicable warranty shall not apply to J&A that have been improper installation or plumbing, remanufactured, refurbished, misused or tampered with in any way.

LIMITATION OF WARRANTY

TO THE EXTENT ALLOWED BY LOCAL LAW, NEITHER J&A NOR ITS THIRD PARTY SUPPLIERS MAKE ANY OTHER WARRANTY OR CONDITION OF ANY KIND, WHETHER EXPRESS OR IMPLIED, WITH RESPECT TO THE J&A PRODUCTS, AND SPECIFICALLY DISCLAIM THE IMPLIED WARRANTIES OR CONDITIONS OF MERCHANTABILITY, SATISFACTORY QUALITY, AND FITNESS FOR A PARTICULAR PURPOSE.

Some states or providences do not allow limitations on the duration of an implied warranty, so the above limitation or exclusion might not apply to you. This warranty gives you specific legal rights that vary from state to state, or providence to providence.

LIMITATION OF LIABILITY

To the extent allowed by the local law, remedies provided in this warranty statement are the customer's sole and exclusive remedies.

TO THE EXTENT ALLOWED BY LOCAL LAW, EXCEPT FOR THE OBLIGATIONS SPECIFICALLY SET FORTH IN THIS WARRANTY STATEMENT, IN NO EVENT WILL J&A OR ITS THIRD PARTY SUPPLIERS BE LIABLE FOR DIRECT, INDIRECT, SPECIAL, INCIDENTAL, OR CONSEQUENTIAL (INCLUDING LOST PROFIT) DAMAGES, WHETHER BASED ON CONTRACT, TORT, OR ANY OTHER LEGAL THEORY AND WHETHER ADVISED OF THE POSSIBILITY OF SUCH DAMAGES.

OBTAINING TECHNICAL SUPPORT

Please, look for help in the following order:

- 1) See Trouble Shooting Guide located in the Manual
- 2) E-mail us; detailed description of your problem, if you have an internet access
- 3) Fax us ; detailed description of your problem, if you have a fax machine
- 4) Contact your local distributor and request an A/S report to be filed on your behalf
- 5) Contact J&A tech support by phone

Please have the following information ready:

- 1) Salon or Spa Name, Address, Telephone Number
- 2) Contact Name
- 3) Model Name, Serial number of the problem unit
- 4) Brief Description of the problem

PHONE: 1-888-400-2648

WEBSITE: WWW.SpaSalon.us