

INSTALLATION AND ROUGH-IN INFORMATION

IMPORTANT - This sheet MUST accompany each installation drawing

IMPORTANT: The Echo Pedicure Chair MUST be installed by a licensed electrician and a licensed plumber in accordance with all national, state and local codes/regulations.

- Upper dimensions are in inches, lower dimensions [] are in centimeters.
- For two or more units, refer to "Multiple Side X Side - Drawing #2 for reference dimensions.
- If utilizing an accessory cart and/or manicure trays an additional ten (10) inches (25.4 cm) between each unit is recommended (carts may be shared to save space).
- **Depending on the use of Manicure Trays, the exact distance between pedicure chairs will vary.** This must be discussed prior to installation to ensure adequate working space. Both the Echo and Maestro are equipped with standard cup holders. Right side manicure tray may have a built-in cup holder. Please contact Continuum Footspas if additional information is required.
- **Electrical Requirements:** One (1) dedicated 15 amp, GFCI protected wall outlet/circuit per unit located within two (2) feet of the rear of the Pedicure Chair. (Actual draw is 5 amps) Each Pedicure Chair will be supplied with a standard five (5) foot grounded power cord. If utilizing an in-floor electrical box (EB), position box underneath curved plastic shrouds centered between H/C water in-lets.
- **Water Supply:** One (1) each 1/2" hot and cold water supply. Location shut-offs on the wall behind the Pedicure Chair (suggested range 4" to 12" apart on center, 4" to 8" A.F.F. (above finished floor) or may be roughed in through the floor as noted on Drawing #4 and/or #5.. Provide 1/2" shut off valves and 1/2" MPT connections.
- Installation of optional drain pump MUST be noted on original customer order. Drain pump MUST be factory installed.
- If wall drain is utilized, 3/4" ID MPT should be installed. Suggested location is centered between Hot and Cold water supply inlets, 4" to 8" A.F.F. Use 3/4" ID hose to connect Pedicure Chair to wall drain.

SPECIAL INFORMATION REGARDING GRAVITY DRAIN INSTALLATIONS

- Always check with local plumbing inspectors for possible special requirements pertaining to Pedicure Chairs.
- Gravity drain is always preferred. If drain pump is NOT required, unit should be ordered WITHOUT drain pump.
- For gravity drain installations, refer to Plumbing Rough-In Drawing #4 and/or #5. If an air gap is required, also refer to Drawing #6.
- Gravity drain: Basin outlet is 1-1/2" female PVC. Rough-in: 3" minimum Hub Drain, 2" A.F.F.
- When utilizing **Standard Through Floor Installation**, (new construction or remodeling) it is **STRONGLY** recommended that both Hot and Cold supply lines be located in the back portion of the spa as noted on **Drawing #4**. Electrical box may be centered between supply lines. Attempting to bring up supply lines in the front near the hub drain is **NOT** recommended and is extremely difficult due to space constraints.
- When replacing existing pedicure chairs, if additional floor space beneath the pedicure chair needs to be covered, (i.e. to conceal plumbing) one may widen the distance between the two (2) curved, black plastic shrouds. (Please see Owner's Manual for more details).

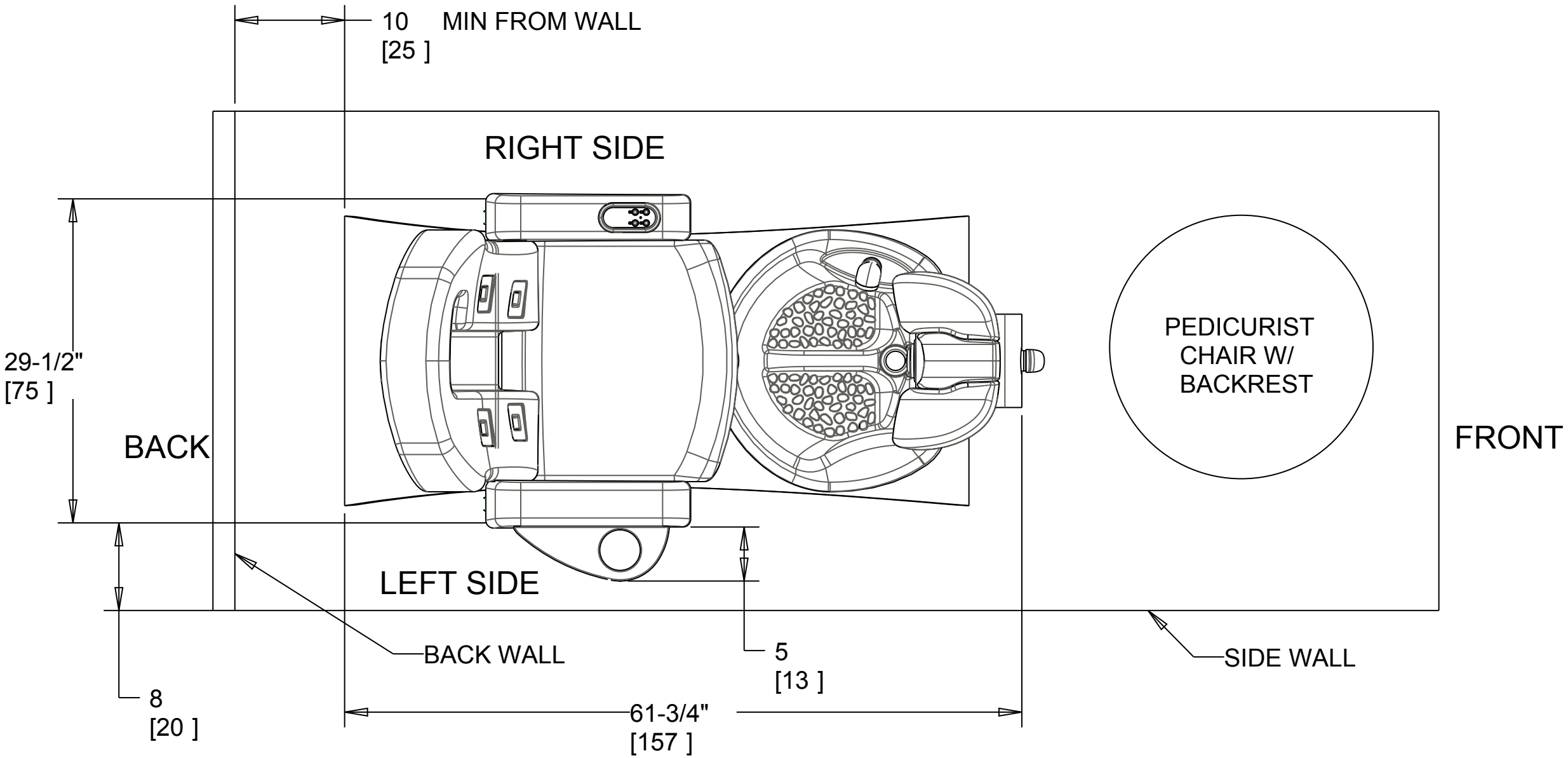
www.SPASLAON.US



February, 2011

CAUTION - EXTREMELY IMPORTANT

PAGE 2 OF 2 - THIS DRAWING IS NOT
COMPLETE UNLESS ACCOMPANIED BY ADDENDUM
ENTITLED
"INSTALLATION AND ROUGH-IN INFORMATION."
PLEASE REVIEW IT CAREFULLY.



SINGLE INSTALLATION "ECHO" - DRAWING #1
PAGE 2 OF 2

(FEB, 2011)

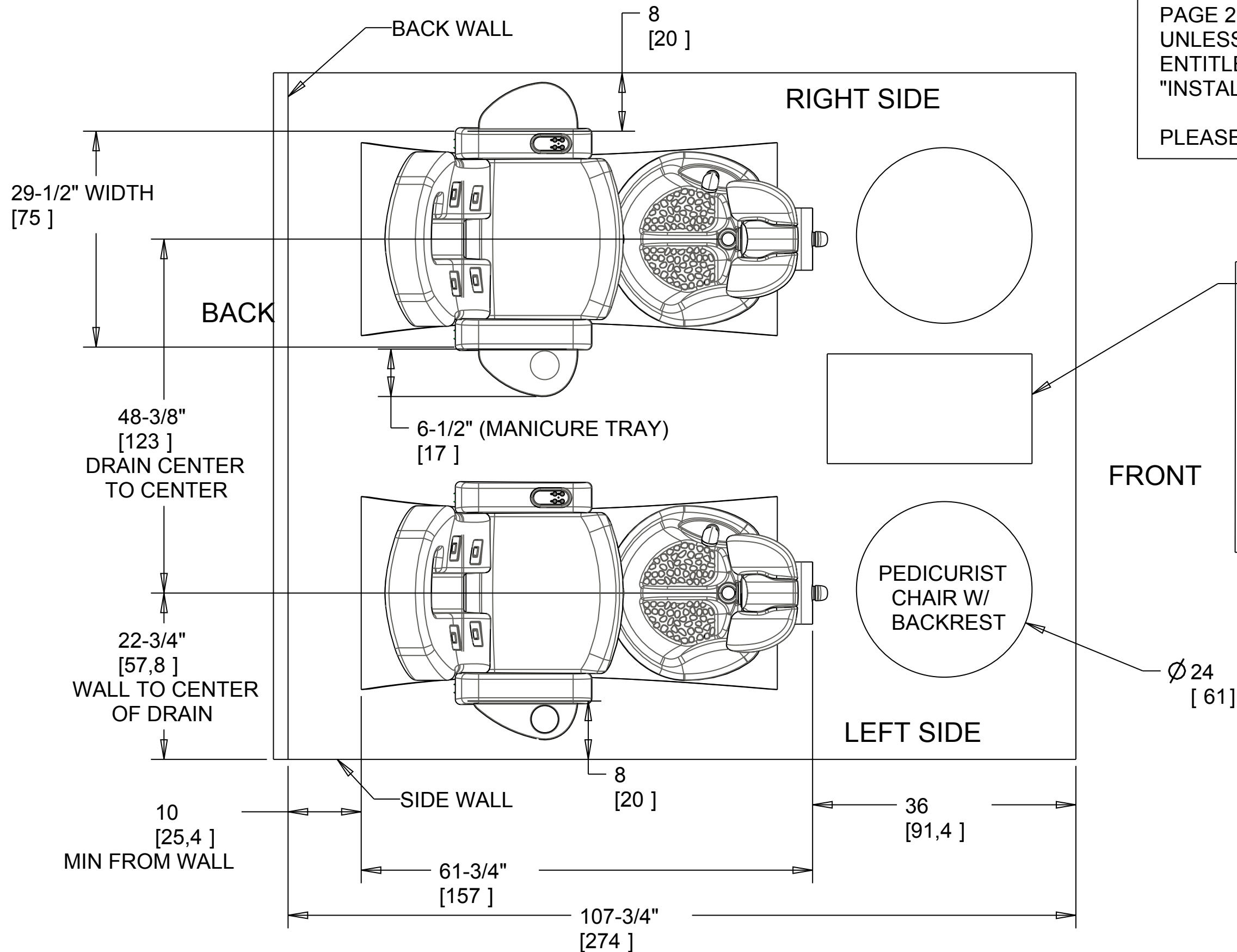
LEGEND:
UPPER DIMENSIONS ARE IN INCHES
LOWER DIMENSIONS { } ARE IN CENTIMETERS

CONTINUUM FOOTSPAS
MODEL: ECHO™
PH - 888.400.2648
WWW.SPASALON.US

CAUTION - EXTREMELY IMPORTANT

PAGE 2 OF 2 - THIS DRAWING IS NOT COMPLETE
UNLESS ACCOMPANIED BY AN ADDENDUM
ENTITLED:
"INSTALLATION AND ROUGH-IN INFORMATION."

PLEASE REVIEW IT CAREFULLY



VERY IMPORTANT:

IF UTILIZING A CART AND/OR
MANICURE TRAYS, AN
ADDITIONAL 10" (25.4 CM)
BETWEEN EACH FOOT SPA
IS RECCOMENDED. THE 48-3/8"
CENTER TO CENTER DRAIN
DIMENSION WILL CHANGE
TO 58-3/8". PLEASE SEE
NOTES ON PAGE 1 OF 2.

(FEB, 2011)

LEGEND:
UPPER DIMENSIONS ARE IN INCHES
LOWER DIMENSIONS [] ARE IN CENTIMETERS

MULTIPLE SIDE X SIDE INSTALLATION "ECHO" - DRAWING #2
PAGE 2 OF 2

CONTINUUM FOOTSPAS
MODEL: ECHO™
PH - 888.400.2648
WWW.SPASALON.US

PLEASE REVIEW IT CAREFULLY



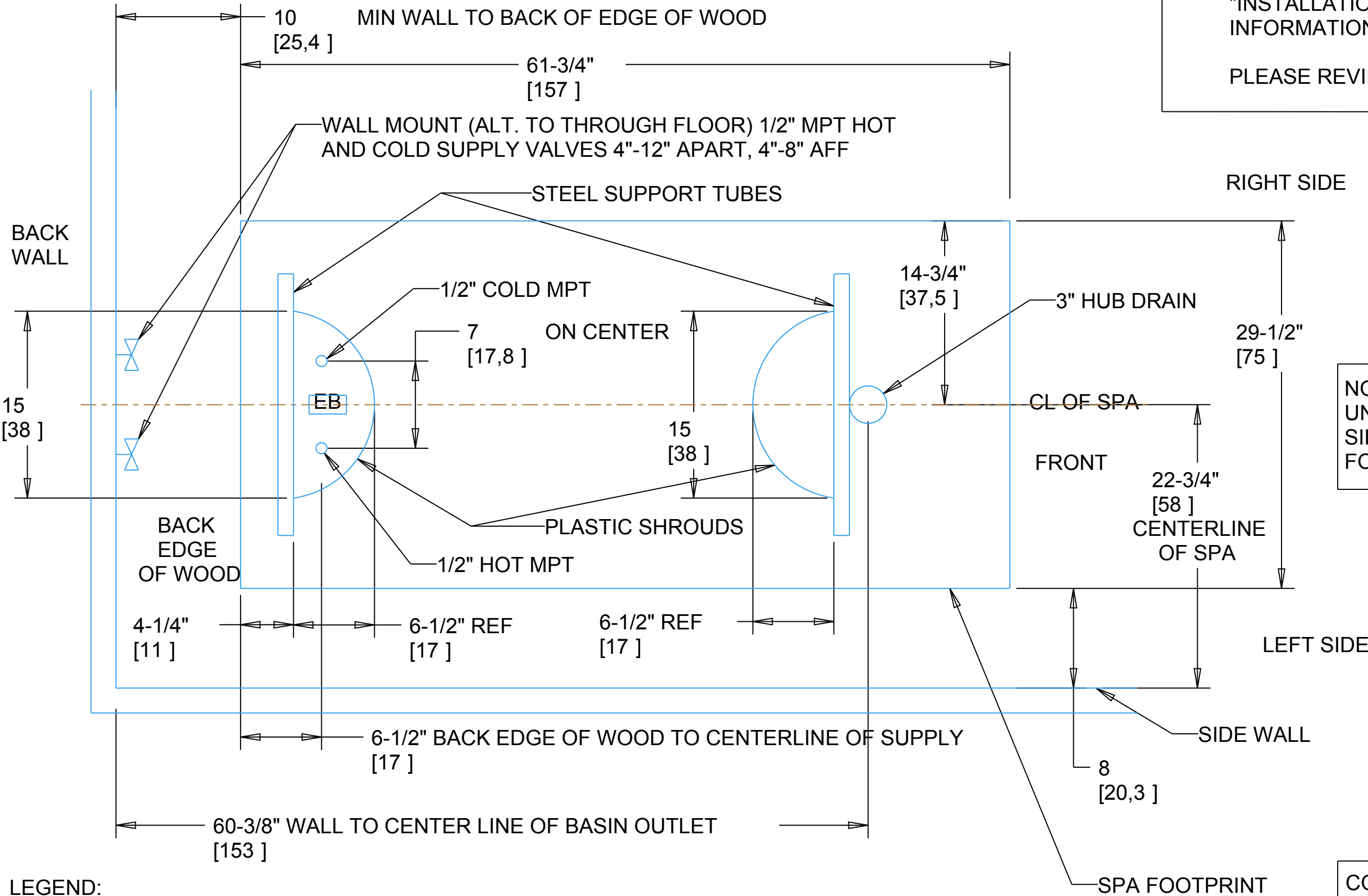
CONTINUUM FOOTSPAS
MODEL: ECHO™
PH - 888.400.2648
WWW.SPASALON.US

PLUMBING ROUGH-IN "ECHO"
STANDARD THROUGH FLOOR INSTALLTION - DRAWING #4
PAGE 2 OF 2

CAUTION - EXTREMELY IMPORTANT

PAGE 2 OF 2 - THIS DRAWING IS NOT
COMPLETE UNLESS ACCOMPANIED BY AN
ADDENDUM ENTITLED:
"INSTALLATION AND ROUGH-IN
INFORMATION."

PLEASE REVIEW IT CAREFULLY.



NOTE: FOR MORE THAN ONE
UNIT REFER TO THE MULTIPLE
SIDE X SIDE DRAWING #2
FOR REFERENCE DIMENSIONS

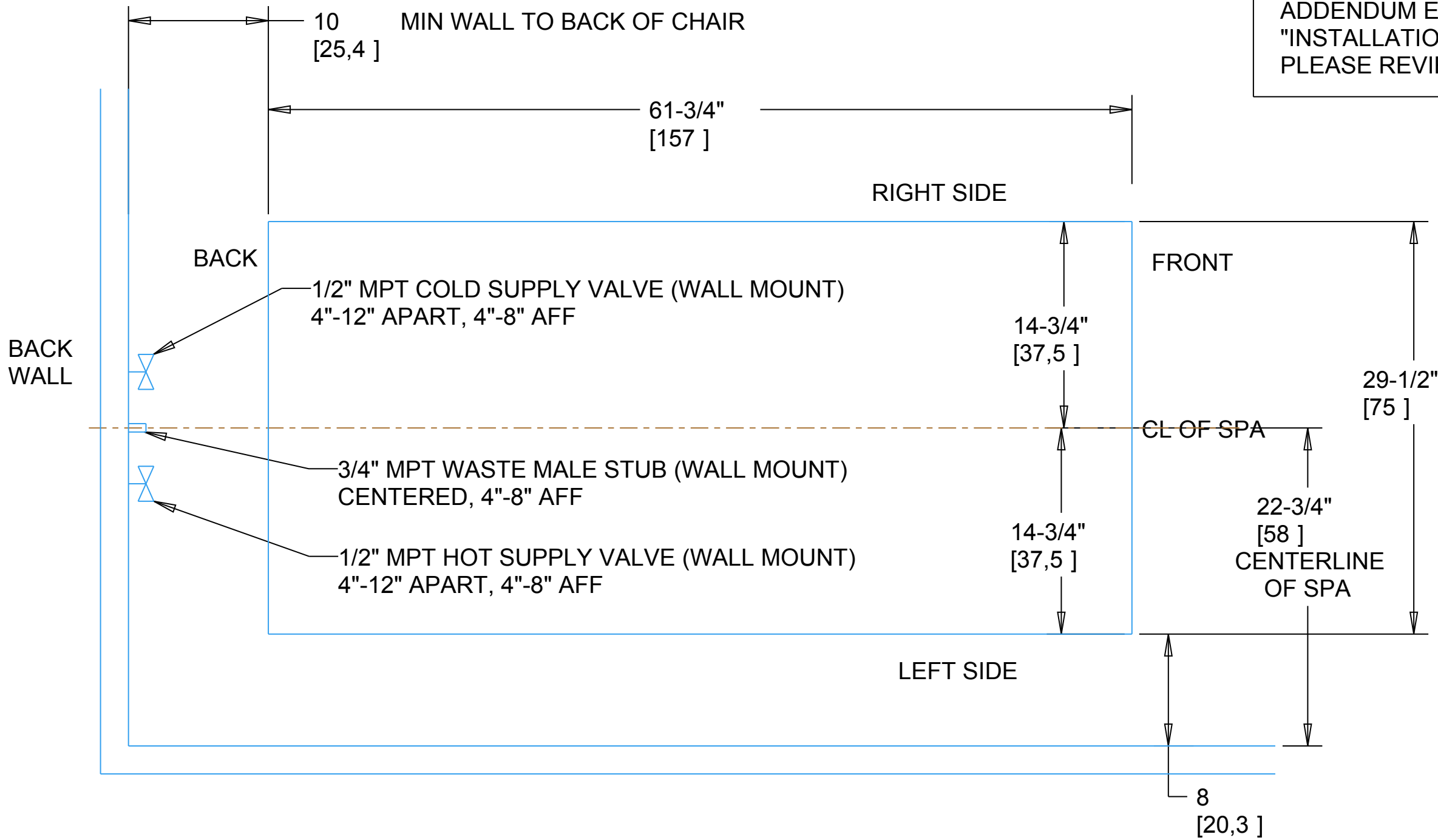
(FEB, 2011)

LEGEND:
UPPER DIMENSIONS ARE IN INCHES
LOWER DIMENSIONS { } ARE IN CENTIMETERS

CONTINUUM FOOTSPAS
MODEL: ECHO™
PH - 888.400.2648
WWW.SPASALON.US

CAUTION - EXTREMELY IMPORTANT

PAGE 2 OF 2 - THIS DRAWING IS NOT COMPLETE UNLESS ACCOMPANIED BY AN ADDENDUM ENTITLED: "INSTALLATION AND ROUGH-IN INFORMATION." PLEASE REVIEW IT CAREFULLY.



NOTE: FOR MORE THAN ONE UNIT REFER TO THE MULTIPLE SIDE X SIDE DRAWING #2 FOR REFERENCE DIMENSIONS.

PLUMBING ROUGH-IN "ECHO"
STANDARD BACK WALL INSTALLATION - DRAWING #5
PAGE 2 OF 2

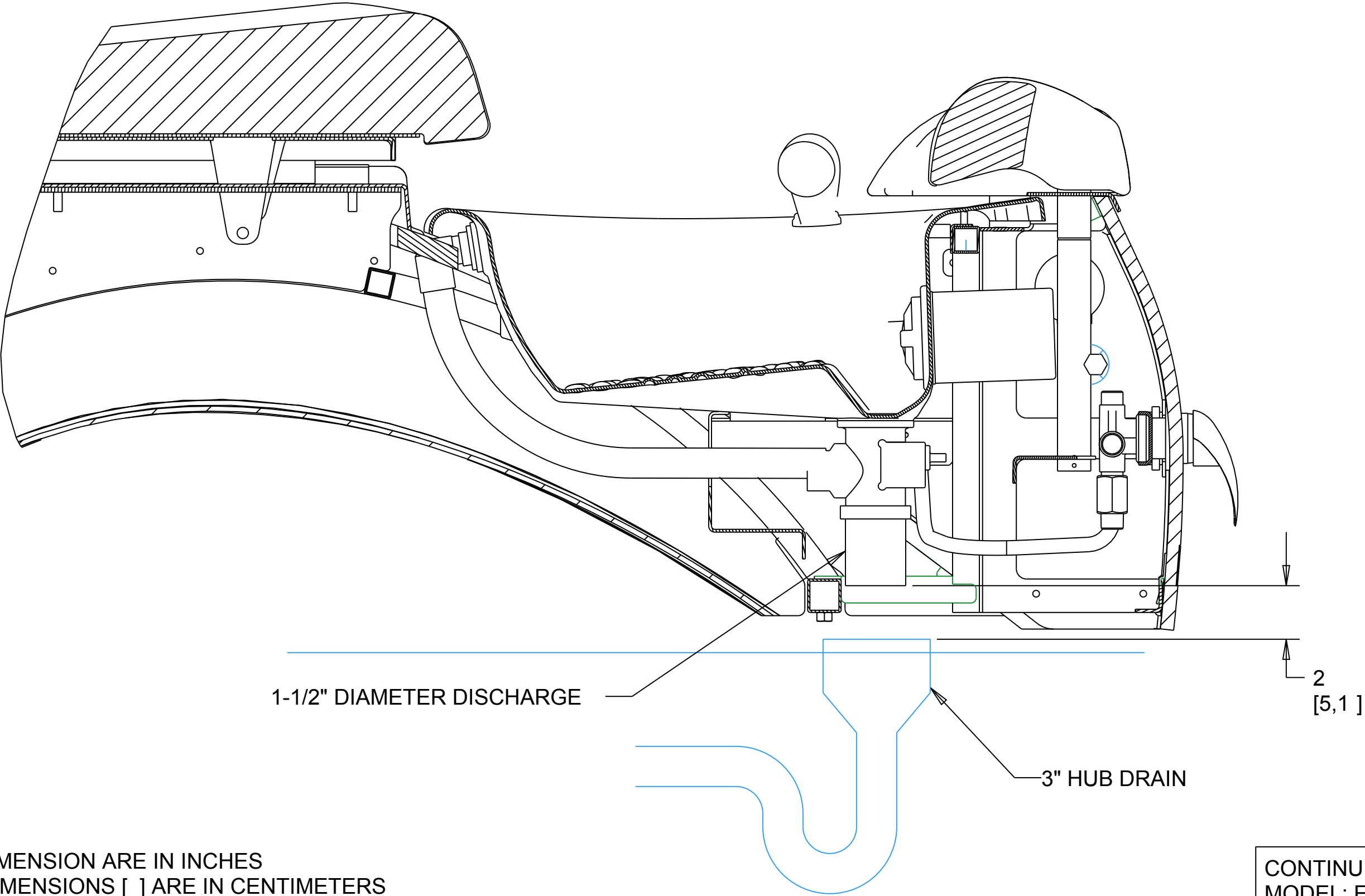
(FEB, 2011)

LEGEND:
UPPER DIMENSIONS ARE IN INCHES
LOWER DIMENSIONS [] ARE IN CENTIMETERS

CONTINUUM FOOTSPAS
MODEL: ECHO™
PH - 888.400.2648
WWW.SPASALON.US

INDIRECT WASTE RECEPTOR INSTALLATION "ECHO"- DRAWING #6
PAGE 2 OF 2

(IF AIR GAP IS REQUIRED BY LOCAL CODE)



LEGEND:
UPPER DIMENSION ARE IN INCHES
LOWER DIMENSIONS [] ARE IN CENTIMETERS

(FEB, 2011)

CONTINUUM FOOTSPAS
MODEL: ECHO™
PH - 888.400.2648
WWW.SPASALON.US