

INSTRUCTION MANUAL

Contents

Product Information	1
Assembly Instructions	2
Control Panel	4
Operation Instructions	6
Maintainance	8
Cautions	9

Thanks for your purchase of our product: EMILIO HAIR PROCESSOR.

Please read the operation manual before using the product.

Please put the operation manual in the place easy for you to read and you can read it at any time.

Product Information

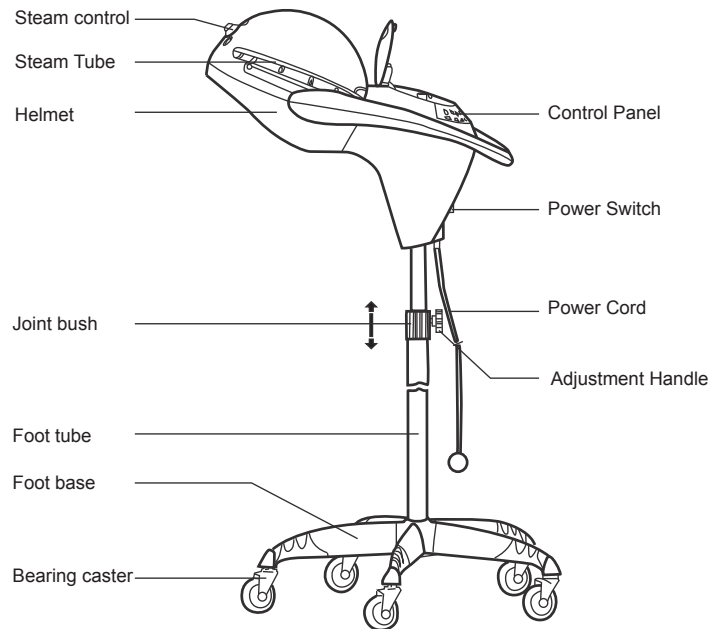
Product Name: Emilio
Product Code: H011

Emilio Automatic Computerized Hair Steamer is a hair care product, newly developed by our company. Compared with the traditional products, this new products biggest improvement is having the micro mist and ozone function.

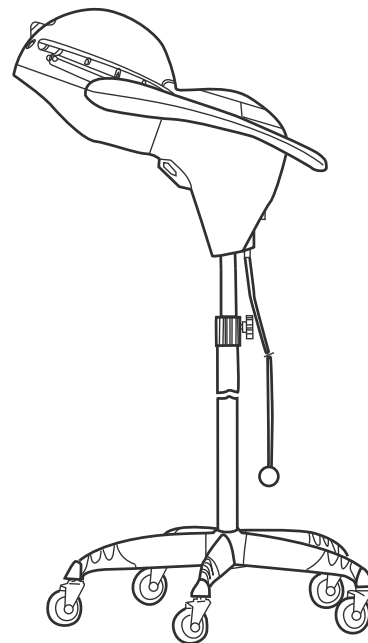
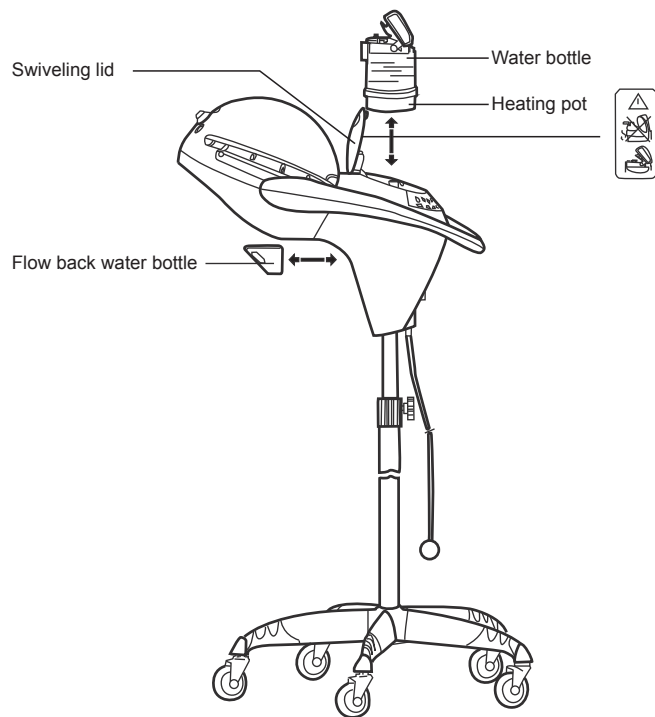
If you add a heating pot (optional attachment), then you can simultaneously increase other physical therapy and hair care functions, such as adding the aromatherapy and flower fragrance. Traditional products need and depend on a lot of mist/steam, but this new product only needs to produce micro mist and then it can arrive at the temperature suitable for the same hair care result, thus it will provide the customer with a more comfortable environment and more choices for hair care.

Ozone is a highly efficient disinfectant, it has very strong power/force to kill and disinfect the micro-organism, including germs, harmful bacteria, epiphyte, mildew and viruses. The ozone is a diffusive gas and the disinfection by ozone won't have any dead areas, so it has a very good disinfection and sterilization result. Sterilization by ozone is different from the normal disinfectant, and the redundant or surplus ozone can break down to be oxygen very fast, so there won't be a secondary pollution problem. Thus it provides the customer with a safer and a more environmental disinfection result, whilst being completely harmless to skin and hair.

Assembly Instructions

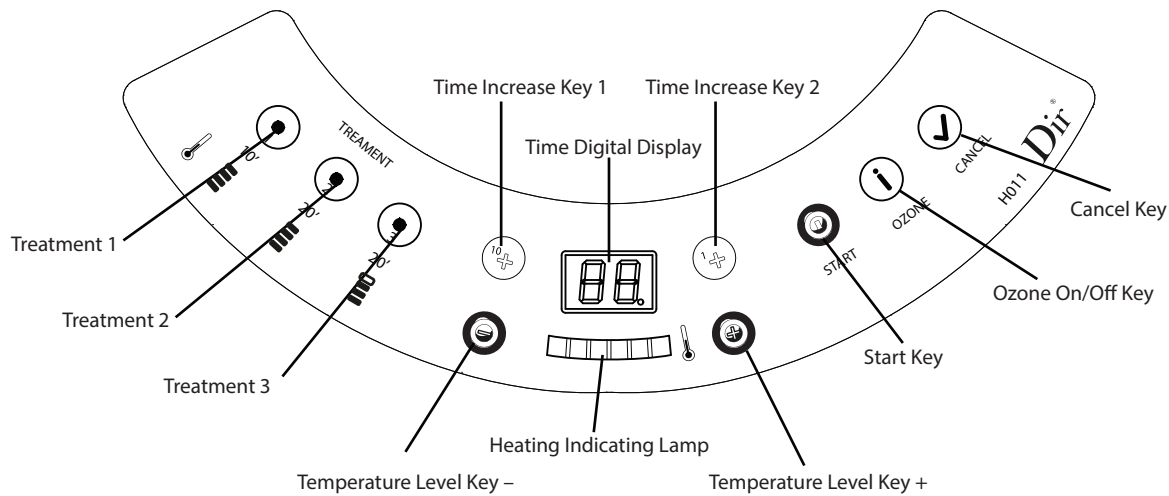


Assembly Instructions



Assembly Complete

Control Panel



Treatment 1

Press this key to choose Treatment 1 Programme; the preset working time is 10 minutes and the temperature level 4.

Treatment 2

Press this key to choose Treatment 2 Programme; the preset working time is 20 minutes and the temperature level is 4.

Treatment 3

Press this key to choose Treatment 3 Programme; the preset working time is 20 minutes and the temperature is level 3

Time Digital Display

Displays the working time under minutes, the longest cycle can be up to 60 minutes.

Time Increase Key 1

By pressing the button once, the treatment will increase by ten minutes; therefore if you treatment is for 60 minutes, key button 6 times.

Time Increase Key 2

By pressing the button once the treatment will increase by one minute.

Temperature Level Key -

This key is used to decrease the temperature by one level

Temperature Level Key +

This key is used to increase the temperature by one level

Start Key

Press this key to start work for each program.

Ozone On/Off Key

By pressing this key the indicating lamp lights will light up; start the ozone function. By pressing this key again the lamp will turn off; close the ozone function.

Cancel Key

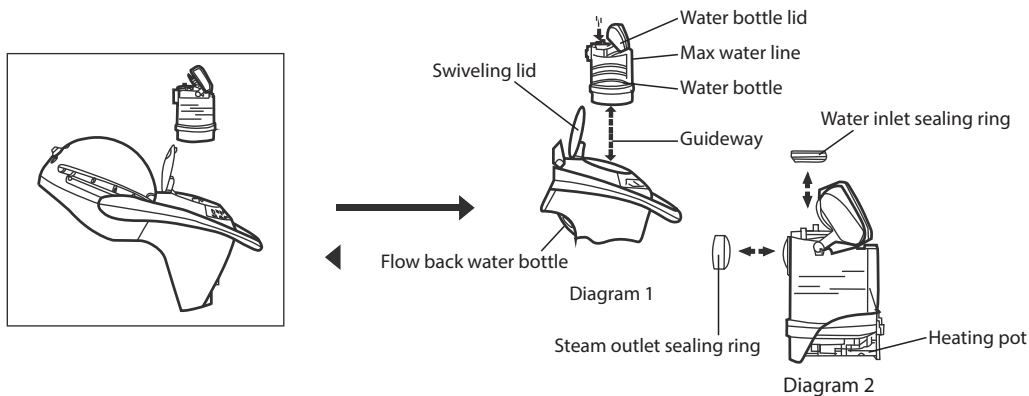
This key is used to change or reset a program.

Heating Indicating Lamp

When the lamp lights up, it shows the machine is at the heating level required.

Operation Instruction

Important: Before using please make sure that the service voltage is the same as the product rating voltage.

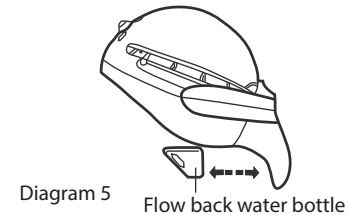
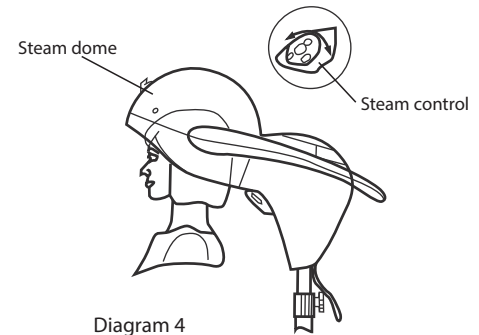
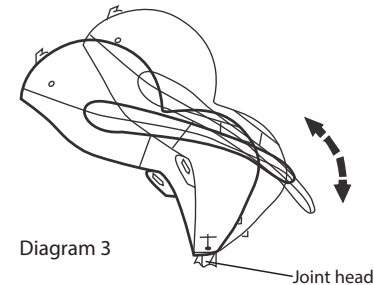


Add Water (see diagrams)

- Open the machines Swivelling Lid and take out the Flow Back Water Bottle.
- Add distilled water or similar pure water to the Water Bottle.
Please note the water level must not be higher than the Max Water Line.
- After adding water, please make sure that the Sealing Rings are placed in the appropriate position, then you can close the Water Bottle Lid.
- Along the Guideway, insert the Water Bottle into the machine. (see diagrams)

Operation Instructions

1. Position the machine comfortably above the forehead/nape of the neck; so that the steam completely covers the customer's hair.
2. Ensure that the customers face and eyes are outside of the steam dome.
3. After you turn on the power switch, the ozone key and the level 4 temperature lamp will light. Time on the control panel will show as "0"
4. If the machine senses that the water bottle is empty the alarm will sound, please then add water to the tank.
5. Choose the treatment required according to the customers need, altogether the product has 3 programmes.
6. To adjust the time and temperature:
Time Increase Key 1 - digital display increases by 10 minutes
Time Increase Key 2 – digital display increases by 1 minute.
To adjust the working temperature, use the temperature adjustment + or – keys.
7. During operation, the time on the digital display will show the remaining time, the time decimal point blinks at the frequency of once per second.
8. During operation if you lift the swivelling lid, the machine will stop heating. Only after you close the lid will the machine continue to heat up.
9. When the time remaining is 3 minutes the control panel will light up.
10. To change the working programme during operation you must first press the Cancel key. When the machine cycle comes to a stop please select the programme required.
11. After finishing the programme the Time Digital display shows as "0" the alarm will also sound.
12. Once you have finished all treatments, please empty the water in the Flow Back Water Bottle.
13. After finishing operation please turn off the power source and remove the power cord.
14. This machine does not have memory function; therefore once you have turned off the machine any previous cycles will be lost.

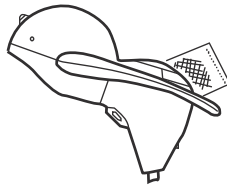


Maintenance

Before cleaning please remove the power cord

1. The inside of the machine helmet is easy to stain and get dirty, please clean this regularly. Chemicals such as hair dye etc can cause the machine to dysfunction.
2. Use a soft, dry cloth to wipe and clean. If water/liquids splash onto the control panel, use a soft dry cloth to remove immediately, otherwise this could also cause the machine to dysfunction.

Attention !: Please do not use the following substances to clean: thinner, alcohol, gas, coal, oil or any other harmful chemicals



Thinner or Benzene



Neutral detergent

Cautions

1. Before using please make sure that the service voltage is the same as the products appropriate rating.
2. Operating environment; an ambient temperature of 5'c -40'c; a relative humidity of less than 95%.
3. To ensure users safety, never insert foreign objects into the machine.
4. Be sure never to use flammable gas or use machine under similar environments.
5. After switching on the power; if you find any abnormal conditions, please contact the technical department immediately – do not attempt to repair yourself.
6. Don't remove the plug by pulling the cable. Please first hold the plug then pull.
7. This machine is strictly prohibited to use outdoors/outside.
8. If the cable is found to be damaged, in order to avoid danger, it should be replaced by the manufacturer.
9. Water must be purified. Don't add or use any cosmetic liquids, astringent, toning lotion, perfume, carbonated water or mineral water (un-pure tap water), otherwise that will induce the machines function and/or create a hyper susceptibility to customers skin.
10. Please keep children away from the machine when in use,
11. If you suffer from any medical condition, please consult your local GP before use.