

Owner's manual
Pedicure Spa
E3 - E5 - E7

SpaSalon.us
 *wholesale*

Inspection of the Evan Spas

Inspect your Evan Spas and contact your local dealer or call Evan at **813-886-5763** for any visible damage

Record important information

Installed by:

Installation Date:

Serial number:

(Locate in the back of Spa Base)

Registration form has been mailed on:

(It is very important to mail your Registration form to Spa Support Center.
Failure of doing so may cause the product warranty to be voided)

Spa Support Center

8105 Anderson Rd
Tampa, FL 33634
Tel: 813-886-5700
Fax: 813.886.5170

Warning

The Spa must be installed by a qualified, licensed plumber and is in compliance with the local government. Failure to comply may result in serious injuries and Warranty will be voided.

We strongly recommend that all outlets connected to pedicure spas to include a GFCI device (Ground Fault Circuit Interrupters). This will reduce the risk of electric shock.

Read this User's Manual thoroughly before installation and use

Introduction

Turn your salon into a modern, luxury salon with a fully automatic massage chair and a fashionable pedicure spa. A luxury salon is not all about the quality service, but also the style, the relaxation ambience, and that is what EVAN SPA promises to deliver.

EVAN SPA is manufactured by one of the largest pedicure spa manufacturers in the US; known for its quality product, exceptional service and innovative designs,

EVAN SPA, a complete luxurious and dependable pedicure spa system with numerous features and accessories expected in a brand.

Specifications:

Dimension: (With seat back)	54"L x 26"W x 55"H
Net Weight:	240 LBS.
Shipping Weight:	290 LBS.
Capacity of Tub:	5 US Gallons
Spa Base:	Fiber Glass with steel Frame
Power Source:	120V AC, 12 Amp, 60 Hz 220-240 v AC, 12Amp, 50 Hz (For Europe & Australia)

UL certified

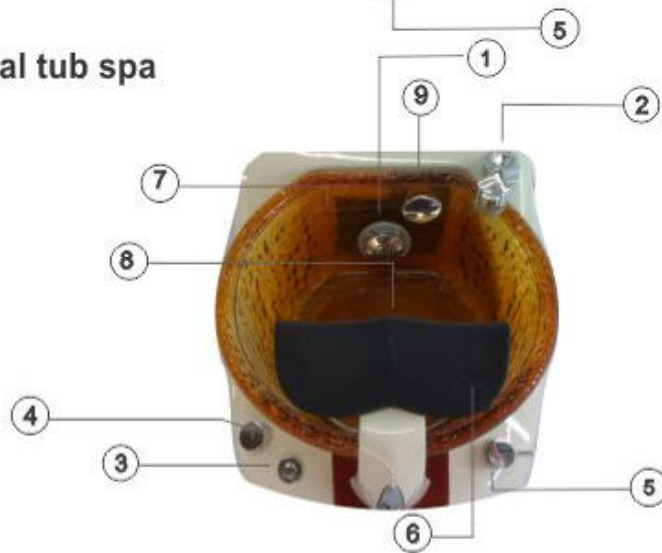


Identified parts

Regular tub spa



Crystal tub spa



- | | |
|----------------------------|------------------------|
| 1. Jet motor | 6. Adjustable footrest |
| 2. Hand shower | 7. LED light |
| 3. On/off Air Switch | 8. Drain plug |
| 4. Drain control Knob | 9. Overflow inlet |
| 5. Hot & cold mixing valve | |

Spa Installation Instruction

Electrical Service

An 120V, 60Hz, 12 Amp GFCI protected grounded circuit must be used to supply power to the Spa. The Service must performed by qualified licensed electrician.

Water Supply

All plumbing connections must conform to local codes.
For the state of MA: proper backflow protection shall be installed

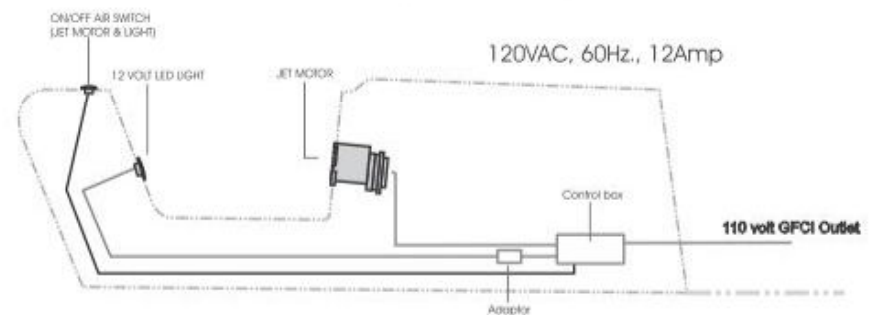
Hot water supply temperature

The hot water supply temperature must not exceed 120 degree F (48 degree Celsius).

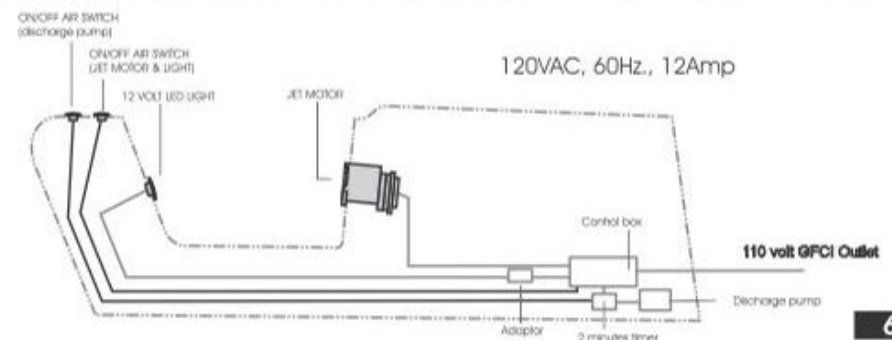
Hot and Cold water supply line

Carefully connecting the incoming water supply lines to the appropriate hoses locate on the back of the Spa. It is recommended to shut off all valves during

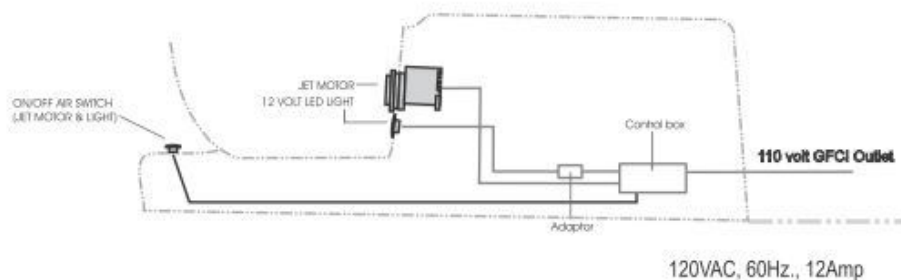
Electric wiring diagram - w/o Drain pump (For regular tub spa)



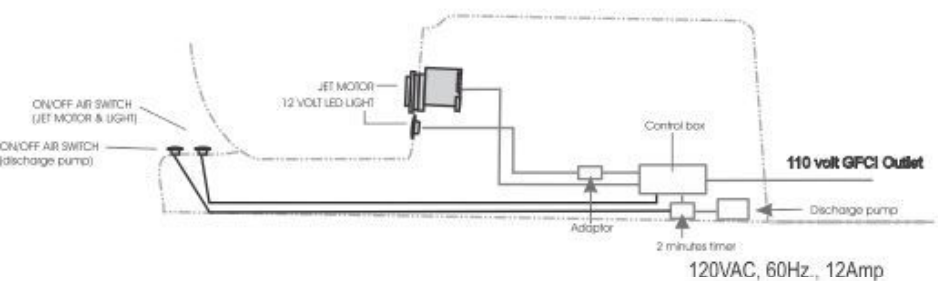
Electric wiring diagram - with Drain pump (optional)(for regular tub spa)



Electric wiring diagram - w/o Drain pump (For crystal tub spa)



Electric wiring diagram - with Drain pump (optional)(for crystal tub spa)



Massage chair assembly: (See details in chair user's manual)



Drain line installation:

Warning

The Spa must be installed by a qualified, licensed plumber. Failure to comply may result in serious injuries and Warranty will be voided.

- Gravity drain:

Kayla spa uses a standard gravity drain. A floor drain is recommended P-Trap is supplied.

- Dis charge pump: (Optional)

Discharge pump is installed by manufacturer

Safety instruction

Caution: Basic precaution must always be observed, including the followings:

Those with the following conditions, but no limited to, should consult with their physician prior to using this product:

- A - Malignant tumor
- B - Heart disease
- C - Conditions requiring rest
- D - Back disease or back trouble from injury by accident.

- Always enter and exit the pedicure spa slowly and carefully.
- Do not permit children to use this unit unless they are supervised at all time.
- Do not use outdoors
- Make sure all operation switches are in OFF position before connecting the power cord to an electrical outlet.

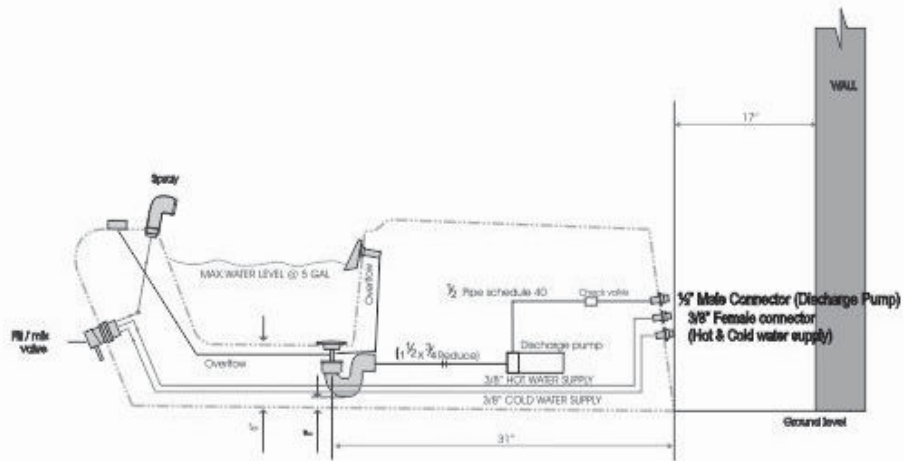
Warning

Grounding instructions and methods

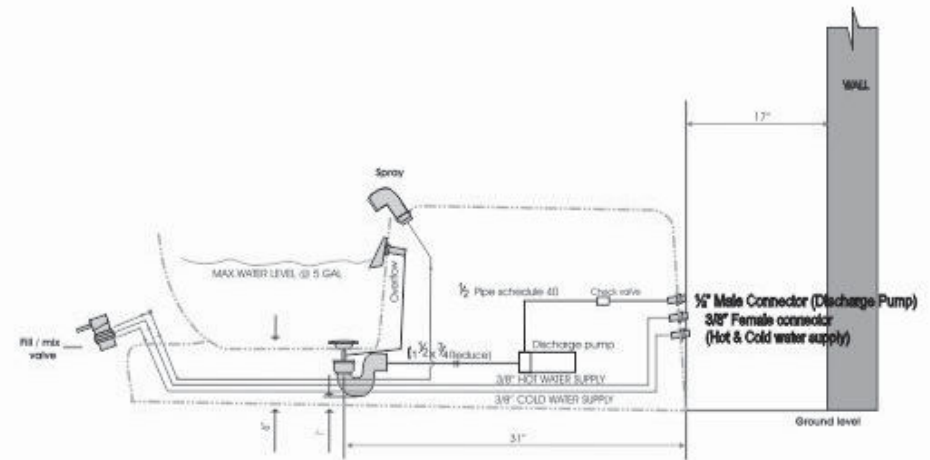
We strongly recommend that all electrical outlets connected to the pedicure spas to include a GFCI device (Ground Fault Circuit Interrupter) in order to reduce the risk of electric shock.

In the event of break down or malfunction, the grounding provides a path of the least resistance for electrical current to reduce the risk of electric shock.

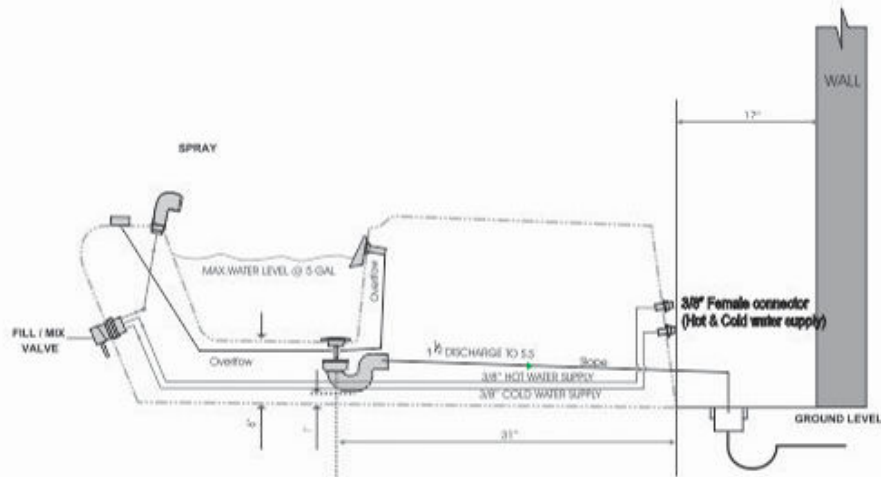
Pump Drain Installation (Optional) (For regular tub spa)



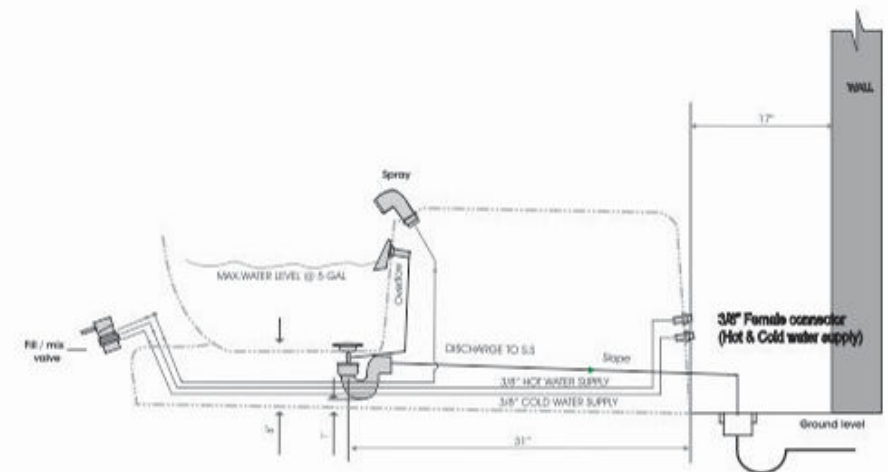
Pump Drain Installation (Optional) (For Crystal tub spa)



Gravity Drain Installation (For regular tub spa)



Gravity Drain Installation (For Crystal tub spa)



Operation and use

1 - Fill Sink:

Your Evan Spa is provided with a single hot and cold mixing valve, located on the Front of the Spa. This is pressure balance valve that requires you to lift the handle to start the water flow and turn the valve to the temperature level desired. Fill water until the jet motor is completely submerged.

2 - Start

Press ON/OFF power button, located next to the footrest or on the side of the crystal tub, to turn jet motor and Spa light. To stop the whirlpool function, press the button again.

3- Hand shower

The Evan Spa is equipped with a sprayer, located on the side of the tub. To activate the hand shower pull the hand shower, lift handle of hot and cold mixing valve.

4- Adjust footrest

The Evan spa allows you to adjust the height of the footrest by lifting its front end up. To have the footrest back to the normal position, push the footrest side way. (see picture)



5- Drain whirlpool sink

A - Gravity Drain

Open the drain plug by turning the control knob on the far right of Spa base.

B- Discharge pump (Optional)

Open the drain plug by turning the control knob. Press discharge pump button, located on front side of spa base.

6- Massage chair

Please see chair User's manual for operation and use of the chair.

Cleaning & Maintenance

Pedicure Spa owner should always contact your local governing agency for their specific cleaning, disinfecting requirements and regulations for pedicure spas. For your clients safety, always use the regulations as a minimum standard for cleaning and disinfecting. Combining your state's standards with the regimen listed below may provide your clients with a safe and healthy pedicure spa environment experience.

See Exhibit A for the completed list of state board contacts.

Below is the recommended Cleaning and Disinfection Procedures for Foot Spa Basins in Salons by Environmental Protection Agency (EPA) - December 2006

Customer precautions - protecting the client

- 1. Check the condition of the client's feet and legs:** If open sores or skin wounds are present (including insect bites, scratches, scabbed-over wounds, or any condition that weakens the skin barrier), explain to the client why they should not use the foot bath.
- 2. Complete pedicure or wax after the foot bath soak:** Any procedure that risks damage to a client's skin should not be done before soaking feet in the foot spa basin.

Step by step instructions for disinfecting pedicure foot spa equipment

After Each Client: (this can take place any time after the client's feet are out of the footbath, while feet are massaged, toes are painted, or other opportunities).

1. Drain the water from the foot spa basin or bowl and remove any visible debris.
2. Clean the surfaces of the foot spa with soap or detergent, rinse with clean water, and drain.
3. After cleaning, disinfect * the surface with an EPA-registered hospital disinfectant (for description) according to the manufacturer's directions on the label. Surfaces must remain wet with the disinfectant for **10 minutes or the time stated on the label**, which may be shorter.
 - * For whirlpool foot spas, air-jet basins, "pipe-less" foot spas, and other circulating spas: It is best to disinfect by filling the basin with clean water, adding the appropriate amount of liquid disinfectant, and turning the unit on to **circulate** the disinfectant for the entire contact time.
4. After disinfection, drain and rinse with clean water.

Nightly:

*For whirlpool foot spas, air jet basins, "pipe-less" foot spas and other circulating spas:

1. **Remove** the filter screen, inlet jets and all other removable parts from the basin and clean out any debris trapped behind or in them.
2. Using a brush, **scrub** these parts with soap or disinfectant (following cleaning directions).
3. **Rinse** the removed parts with clean water and place them back in to the basin apparatus.
4. **Fill** the basin with clean water and add an **EPA-registered hospital disinfectant**, following label directions. Turn the unit on and circulate the system with the liquid for 10 minutes, or the label-indicated time if different. (The whirlpool mechanism of the tub must be operating for the entire disinfection period so the piping and internal components that contain hidden bacteria are disinfected)
5. **After disinfection, drain, rinse** and let air dry.

* For simple basins (no circulation):

1. **Drain** the basin and remove any visible debris.
2. **Scrub** the bowl with a clean brush and soap for disinfectant (following cleaning directions). **Rinse and drain.**
3. Disinfect basin surfaces with an **EPA-registered hospital disinfectant**, following manufacturer's directions. Surfaces must remain wet with the disinfectant for 10 minutes or the contact time stated on the label.
4. **Drain** the basin, **rinse** with clean water and let air dry.

Important additional measures

- * **Follow your state guidelines and regulations:** Some states require a weekly flush of the whirlpool mechanism with bleach and that the bleach remain in contact for over 8 hours. Salons should consult state cosmetology regulations to make sure they are in compliance.
- * **Read all labels and instruction manuals:** Always follow label directions for disinfectant products, and consult operating manuals for foot spa basins. Care should be taken to use appropriate doses of products to prevent damage to foot spas.
- * **Know the condition of your equipment:** If your whirlpool foot spa has not been regularly cleaned and disinfected, you may need to do more than just the maintenance steps listed above to remove bacterial buildup from the system. Consult the foot spa manufacturer for further information. A higher level EPA-registered disinfectant, such as those labeled "Tuberculocides" may be used initially (refer to the listing of these products on the [List B: EPA Registered Tuberculocide Products Effective Against Mycobacterium tuberculosis \(PDF\)](#) (33pp, 167.1 KB). Once the system has been adequately disinfected, regular maintenance with cleaning and use of a hospital disinfectant, as described in this document, may be used.

NOTE:

Cleaning or sanitizing is NOT disinfecting. According to the Centers for Disease Control (CDC) and Prevention, and the US Environmental Protection Agency (EPA), disinfecting occurs only when there is a reduction of pathogenic microbes at 99.000%. Sanitizing is only a reduction of 99.9%. Cleaning of whirlpool pedicure spas requires surfactants and chelating detergents that are low-foaming and have the ability to remove body oils, organic oil additives, mineral oil, skin cells, nail clippings etc that can accumulate both in the basin and the jets which may become a fertile area for micro organisms grow.

The use of oil based products can build up in the whirlpool system causing clogging in the jets. Adherence to the above cleaning will minimize build up. Evan spa does not recommend the use of mineral oil based products.

Disclaimer:

We recommend that all salon owners must follow the most restricted guideline of the EPA and/or the local governing agency on sanitation and disinfection to protect his/her customers' health. Because health risks and infections are depended on the sanitation and disinfection measurements taken by the salon owner, of which Evan Spa does not have any control; therefore, We are not responsible for this matter.

Health risk warning

Individuals whose feet or legs are inflamed or have open wounds should not be allowed to use the pedicure spa at any time.

Nail technicians should advise clients to consult their physician before using the pedicure spa if there is any sign of fungal infection, swelling, fracture, or persistent pain.

In some cases diabetics may experience improved circulation in their feet, but should first consult their physician prior to receiving a pedicure. The client's massage and pedicure spa experience should be pleasant and comfortable.