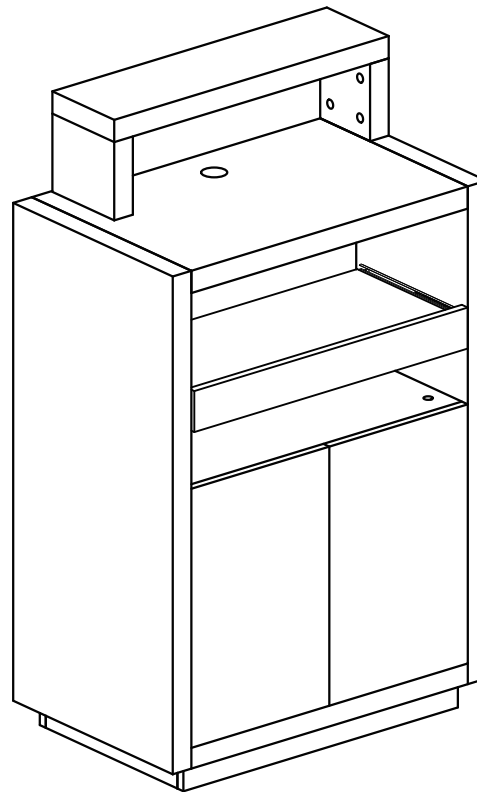


Orsacchiotto

4406

INSTRUCTION MANUAL



EN

CONTENTS

Product Introduction	3
Warranty	4
Assembly Instructions	5
List of parts	5
Tools Necessary	7
Assembly Techniques Display	8
Instructions	9
Aftercare instructions	17
Contact Us	18

Please read the operation manual before using the product.

Please put the operation manual in the place easy for you to read and you can read it at any time.

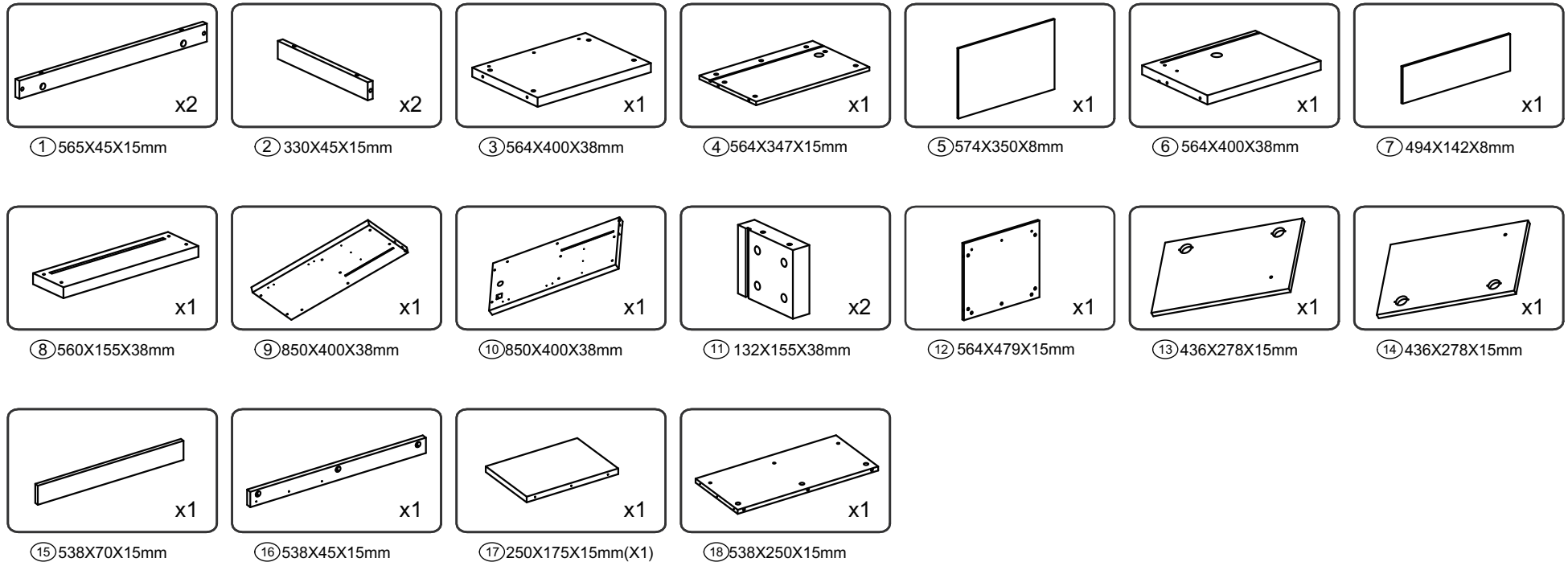
PRODUCT INTRODUCTION

Product Name: Orsacchiotto
Product Code: 4406

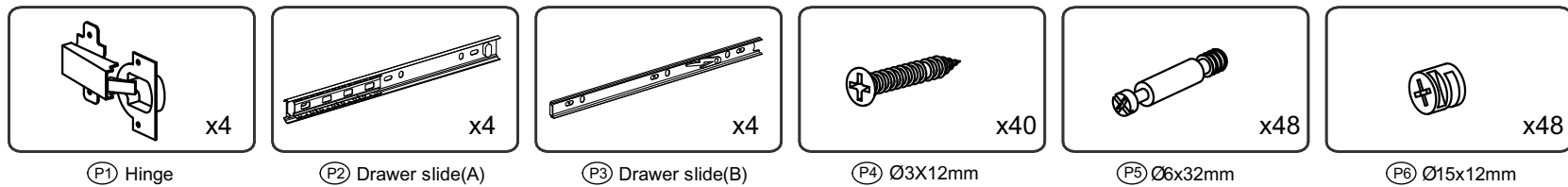
The trendy DIR Orsacchiotto reception desk brings a real focal point to any salon with display space on front. Styled in a contemporary ash finish with a split-level with glass covered working surface and display area, this unit offers both practicality and impact. Easy to assemble.

ASSEMBLY INSTRUCTIONS

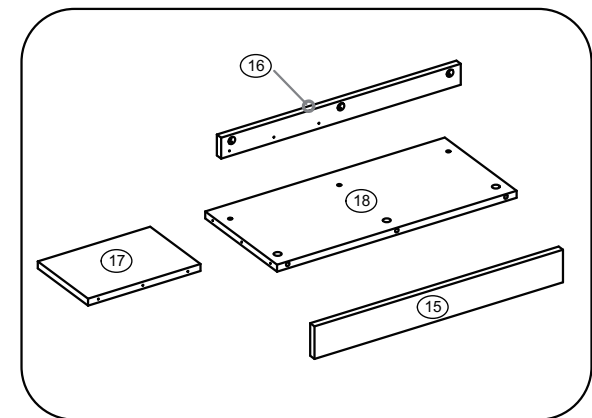
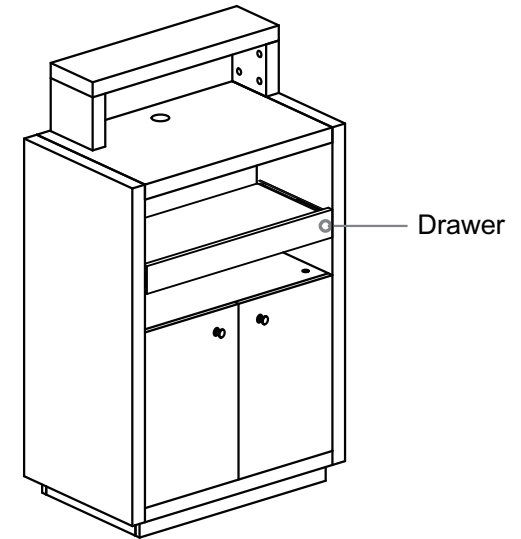
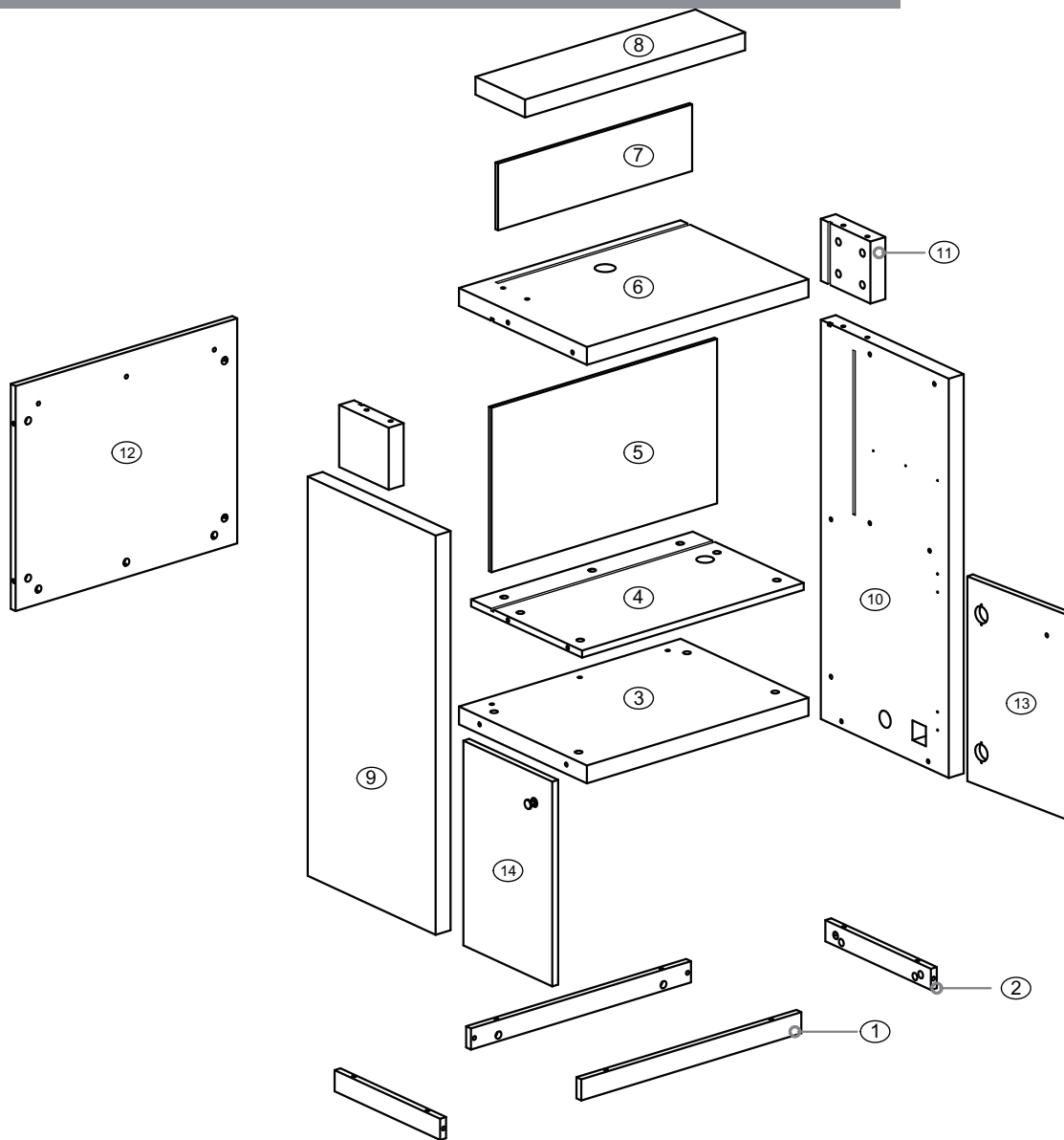
List of Parts



Part



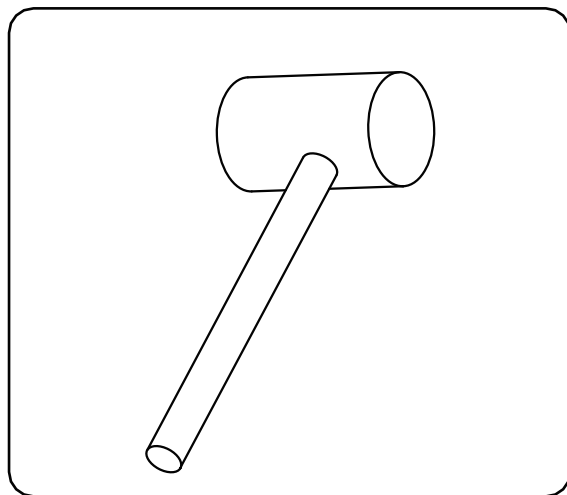
ASSEMBLY INSTRUCTIONS



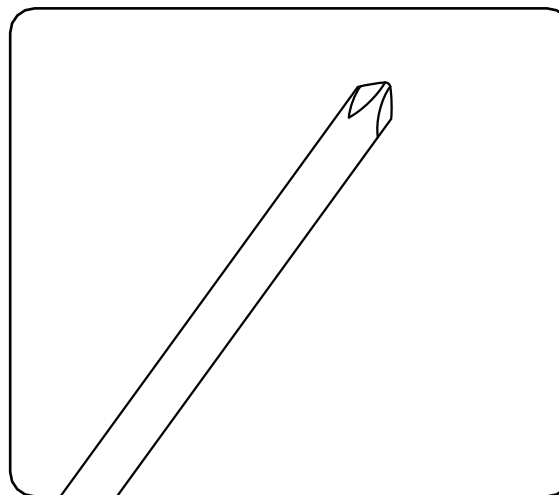
Drawer View

ASSEMBLY INSTRUCTIONS

Tools Necessary

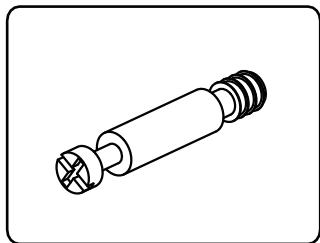


Rubber Hammer

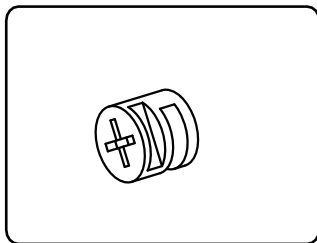


Cross screwdriver

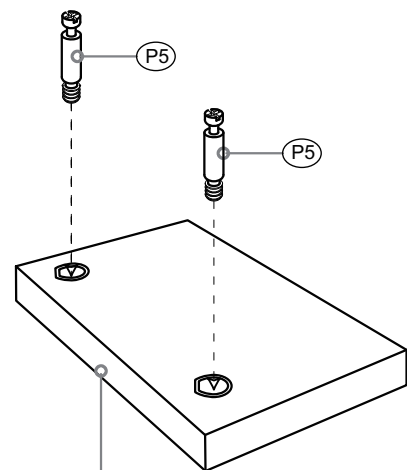
ASSEMBLY INSTRUCTIONS



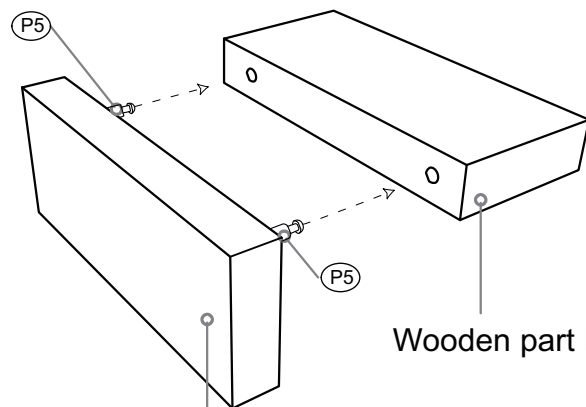
(P5) Ø6x32mm



(P6) Ø15x12mm

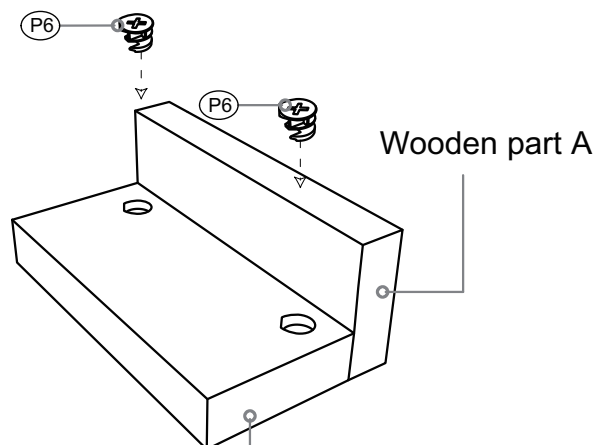


Wooden part A



Wooden part A

Wooden part B



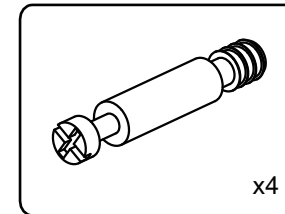
Wooden part B

Wooden part A

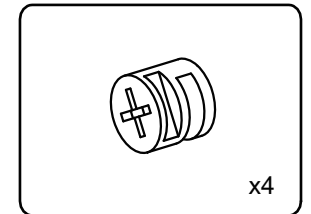


Please put parts together with full 2 techniques instructions for every assembly step in the following pages.

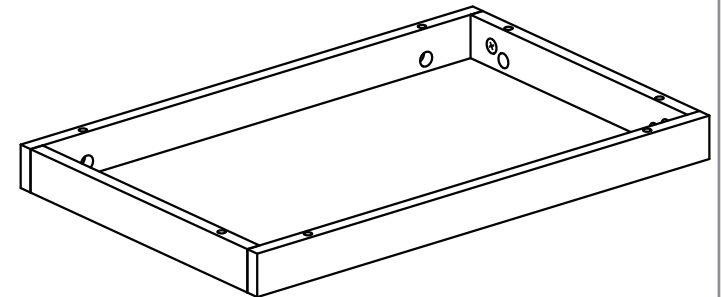
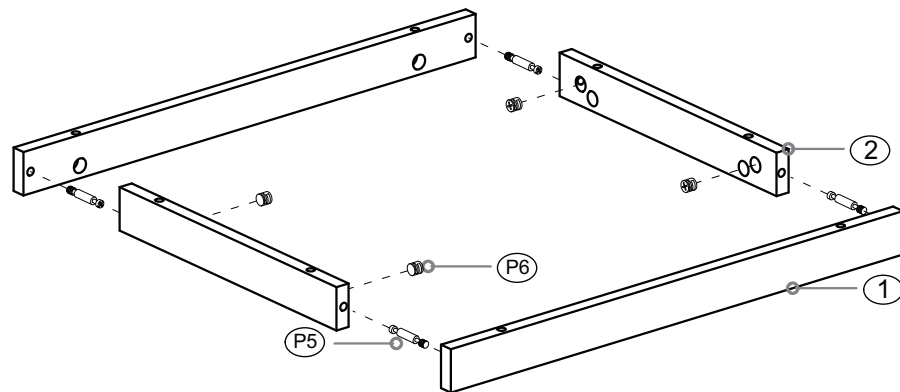
ASSEMBLY INSTRUCTIONS



(P5) Ø6x32mm

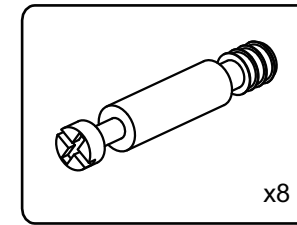
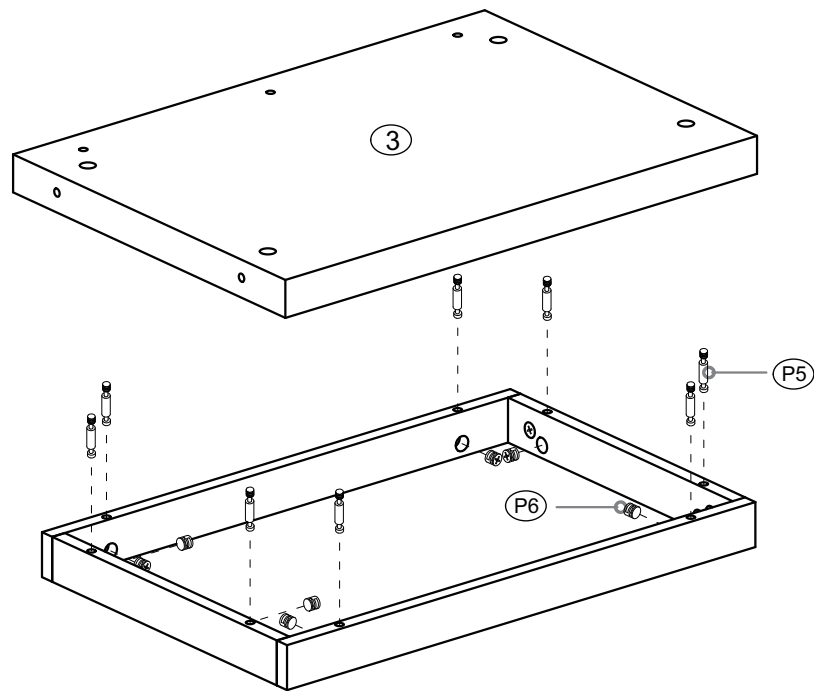


(P6) Ø15x12mm

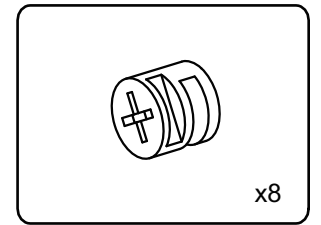


Step1

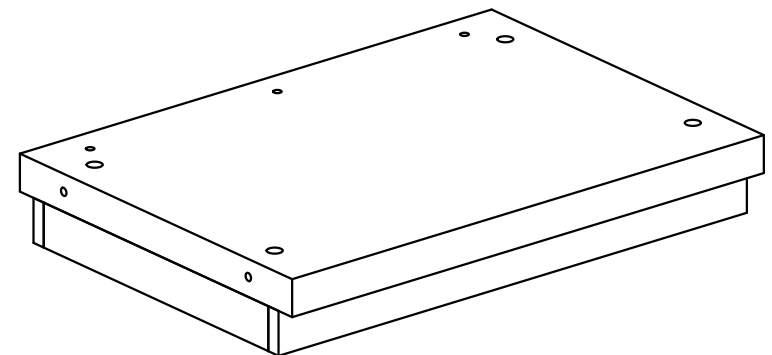
ASSEMBLY INSTRUCTIONS



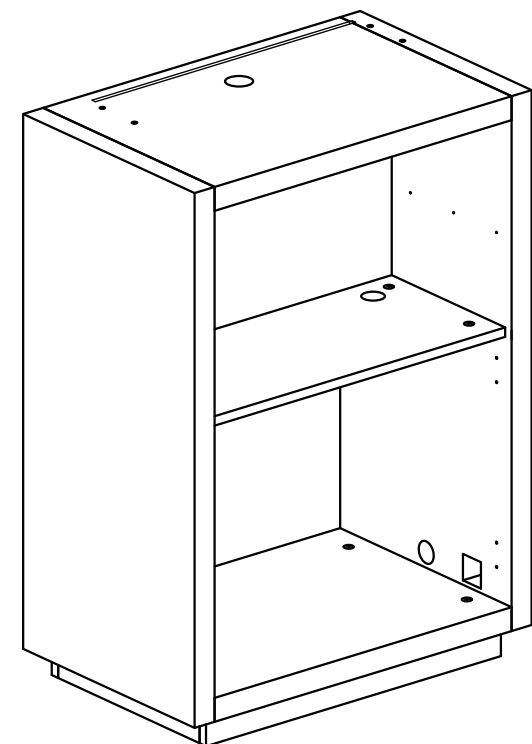
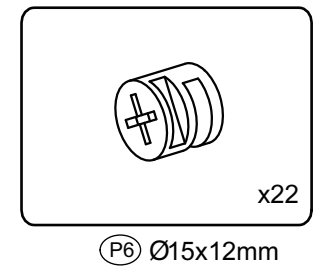
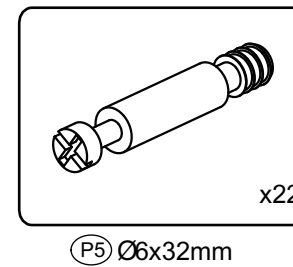
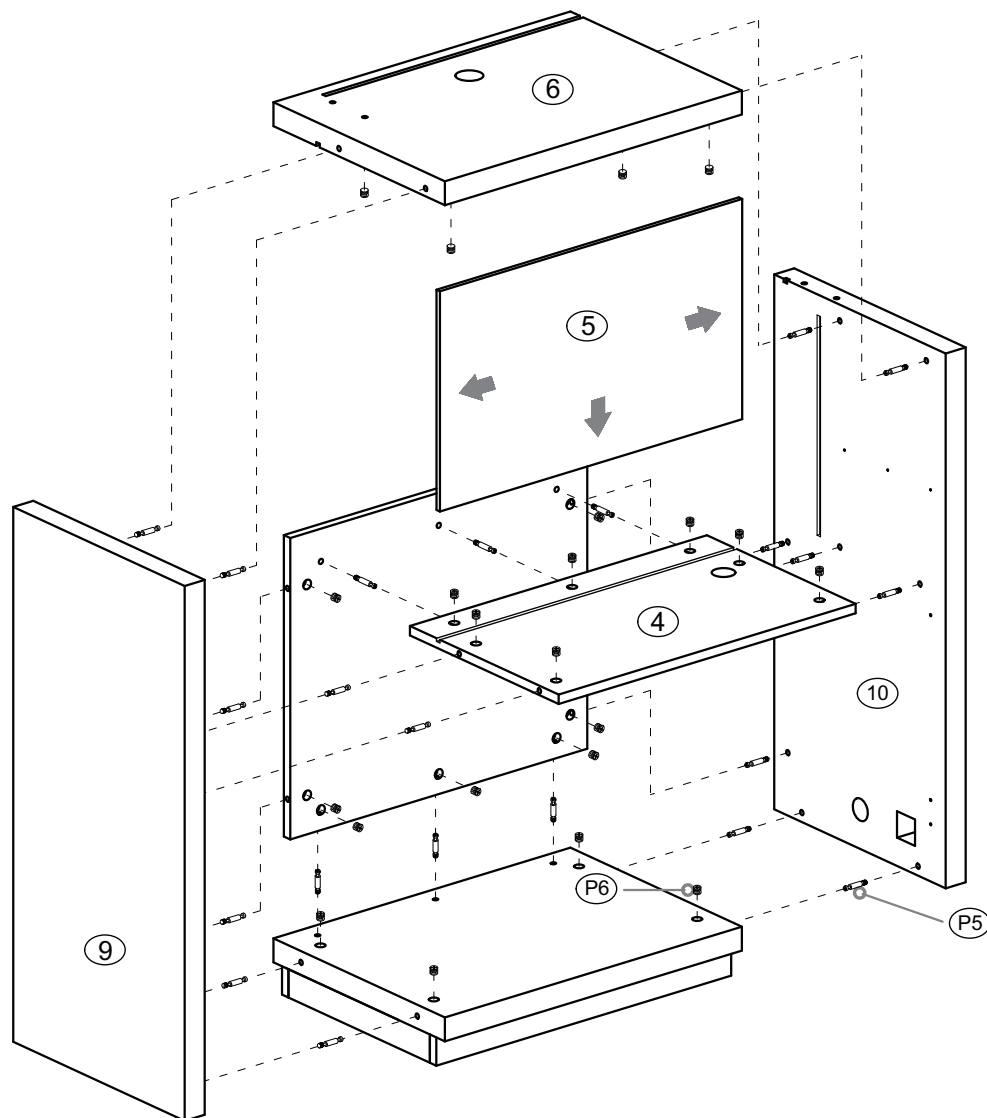
(P5) $\text{Ø}6 \times 32\text{mm}$



(P6) $\text{Ø}15 \times 12\text{mm}$

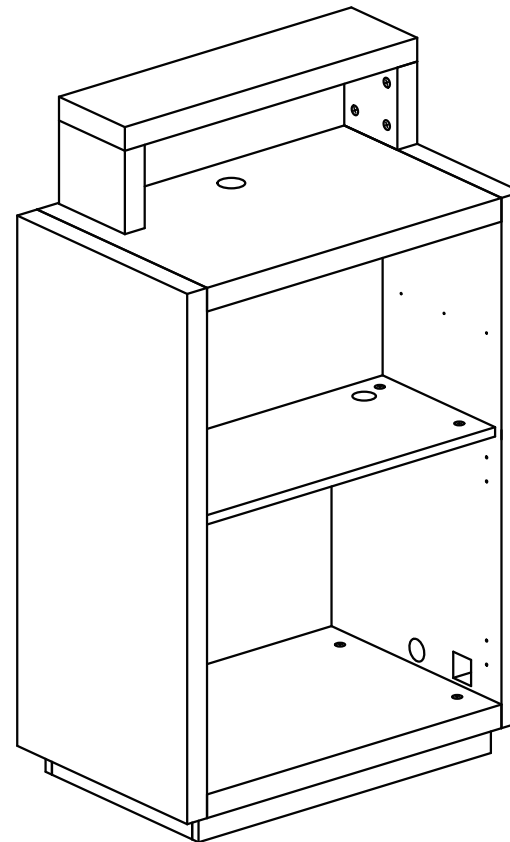
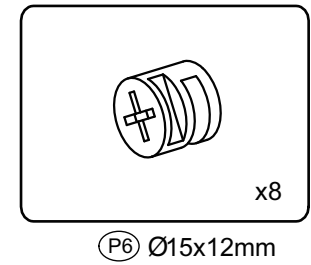
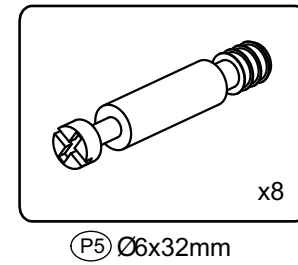
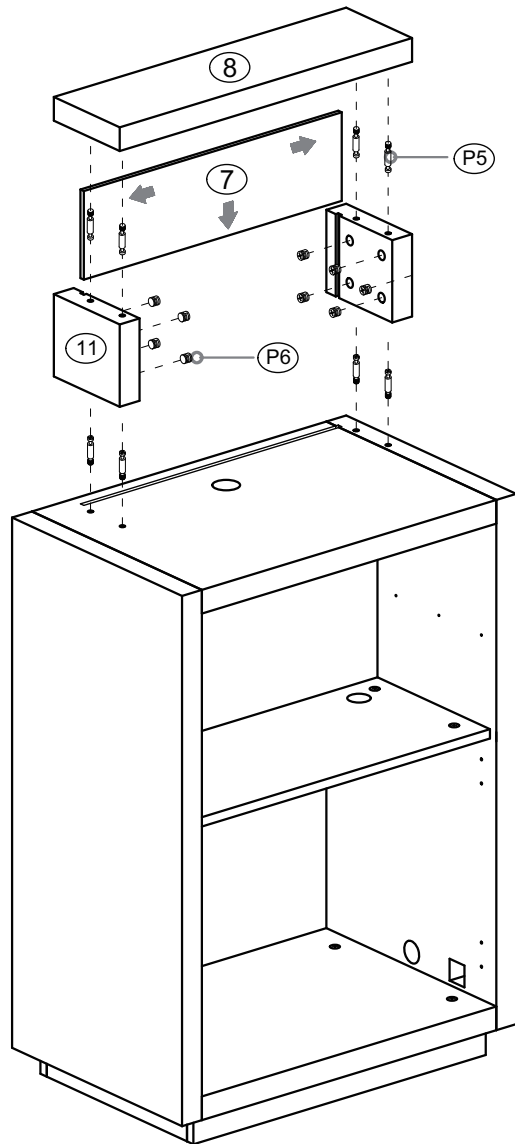


ASSEMBLY INSTRUCTIONS



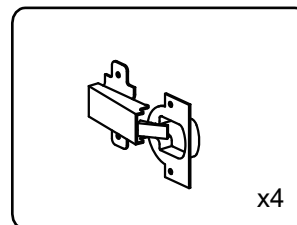
Step3

ASSEMBLY INSTRUCTIONS

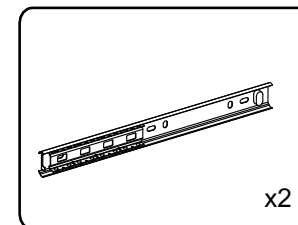


Step4

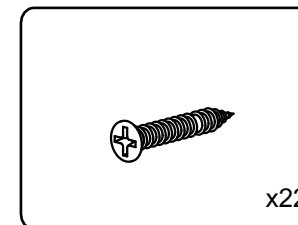
ASSEMBLY INSTRUCTIONS



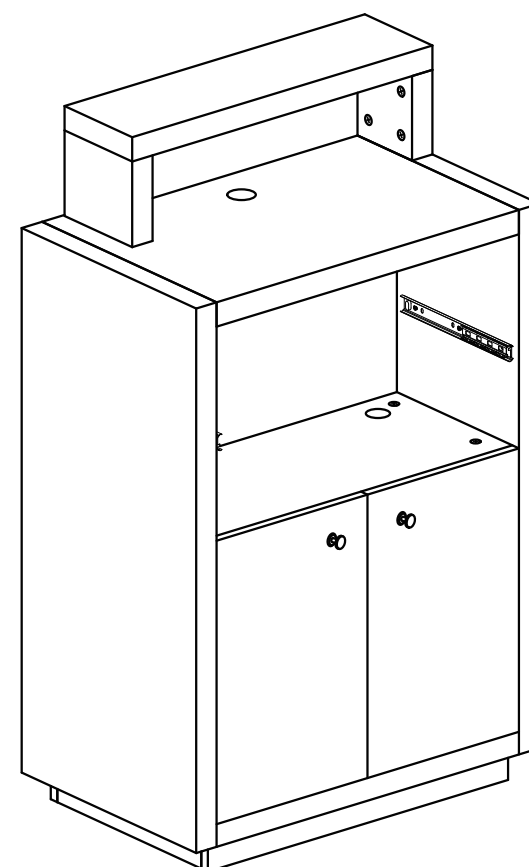
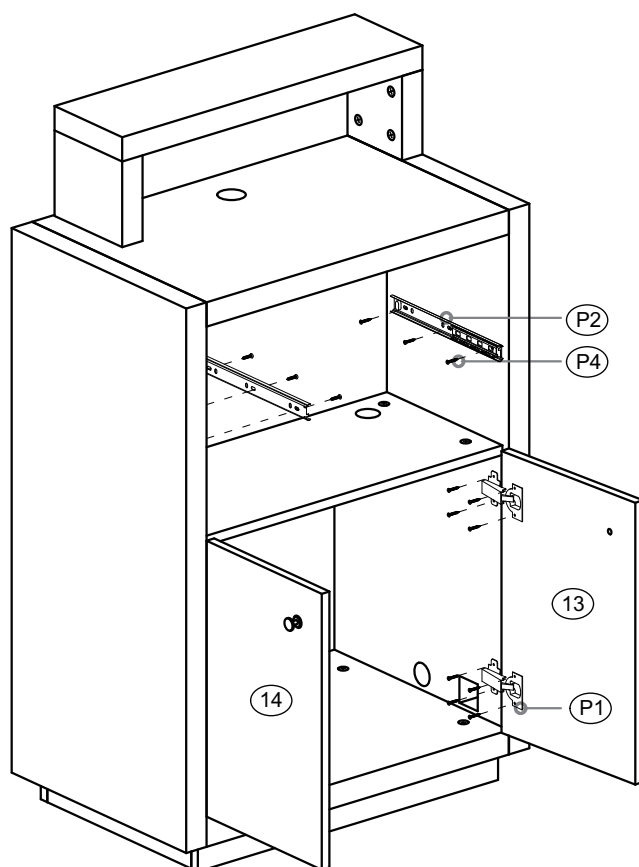
(P1) Hinge



(P2) Drawer slide(A)

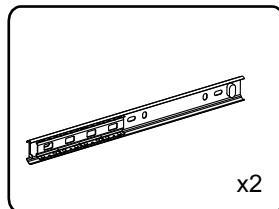


(P4) Ø3X12mm



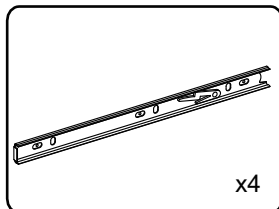
Step5

ASSEMBLY INSTRUCTIONS



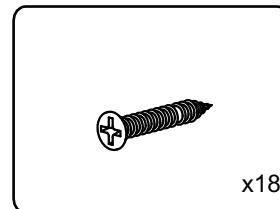
x2

(P2) Drawer slide(A)



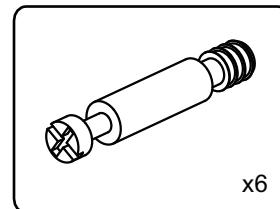
x4

(P3) Drawer slide(B)



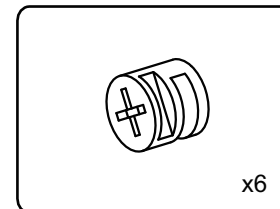
x18

(P4) Ø3X12mm



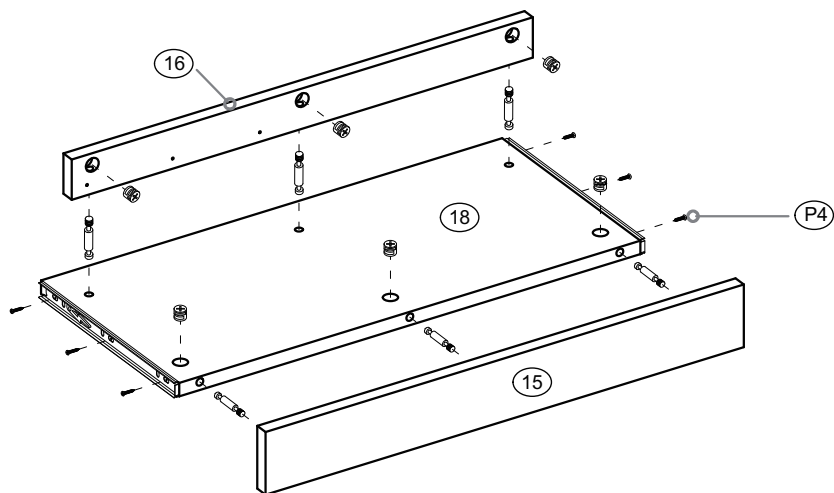
x6

(P5) Ø6x32mm

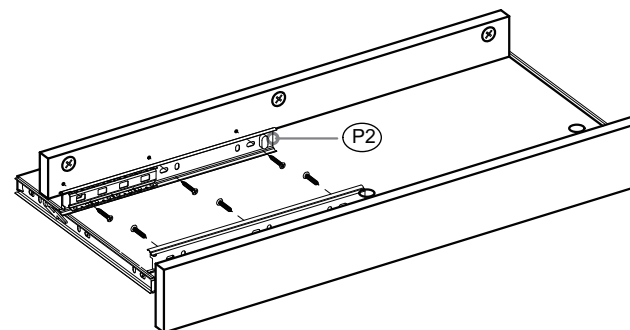


x6

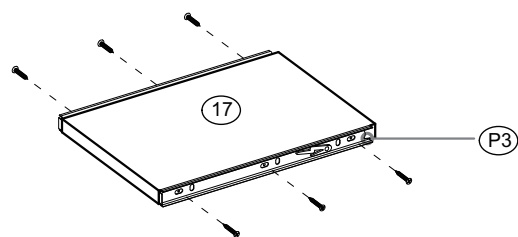
(P6) Ø15x12mm



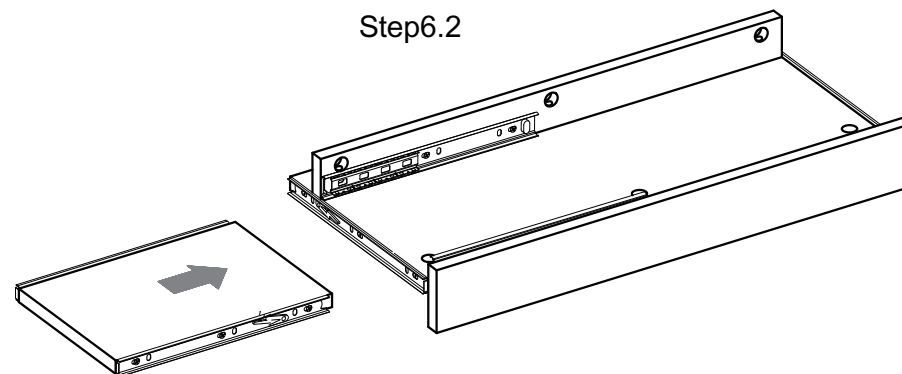
Step6.1



Step6.2

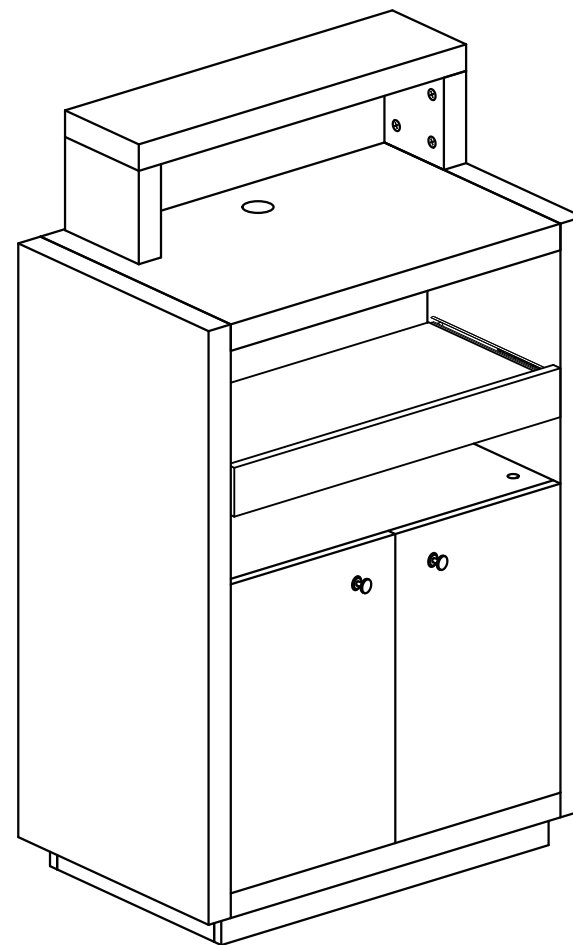
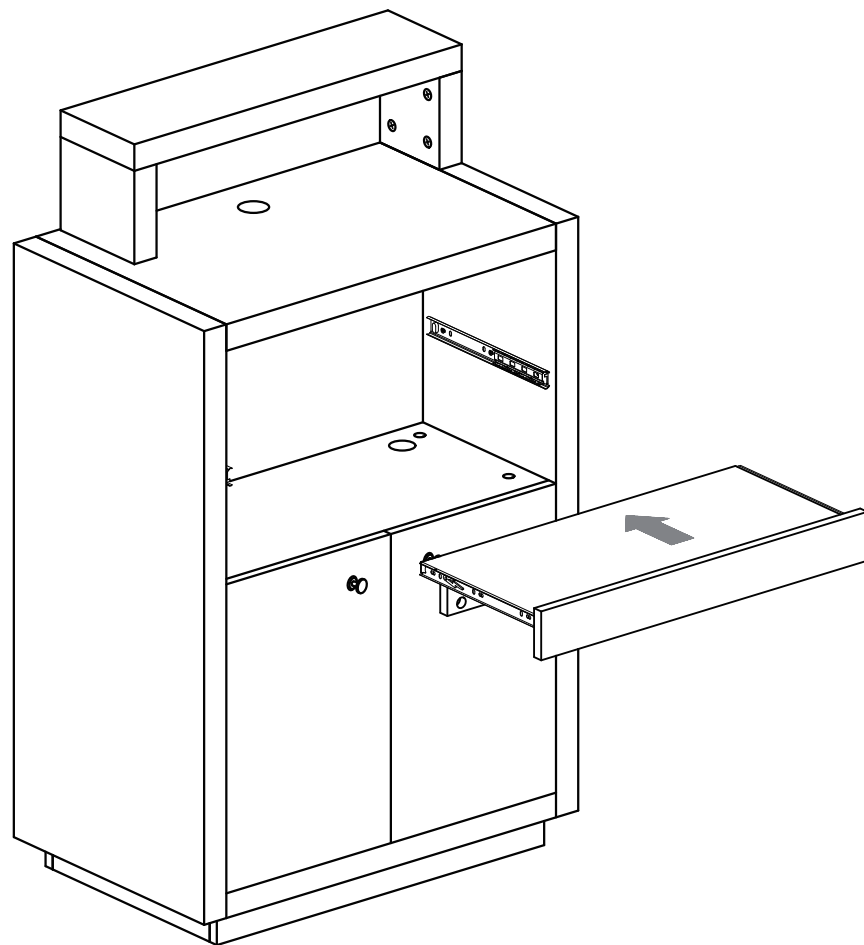


Step6.3



Step6.4

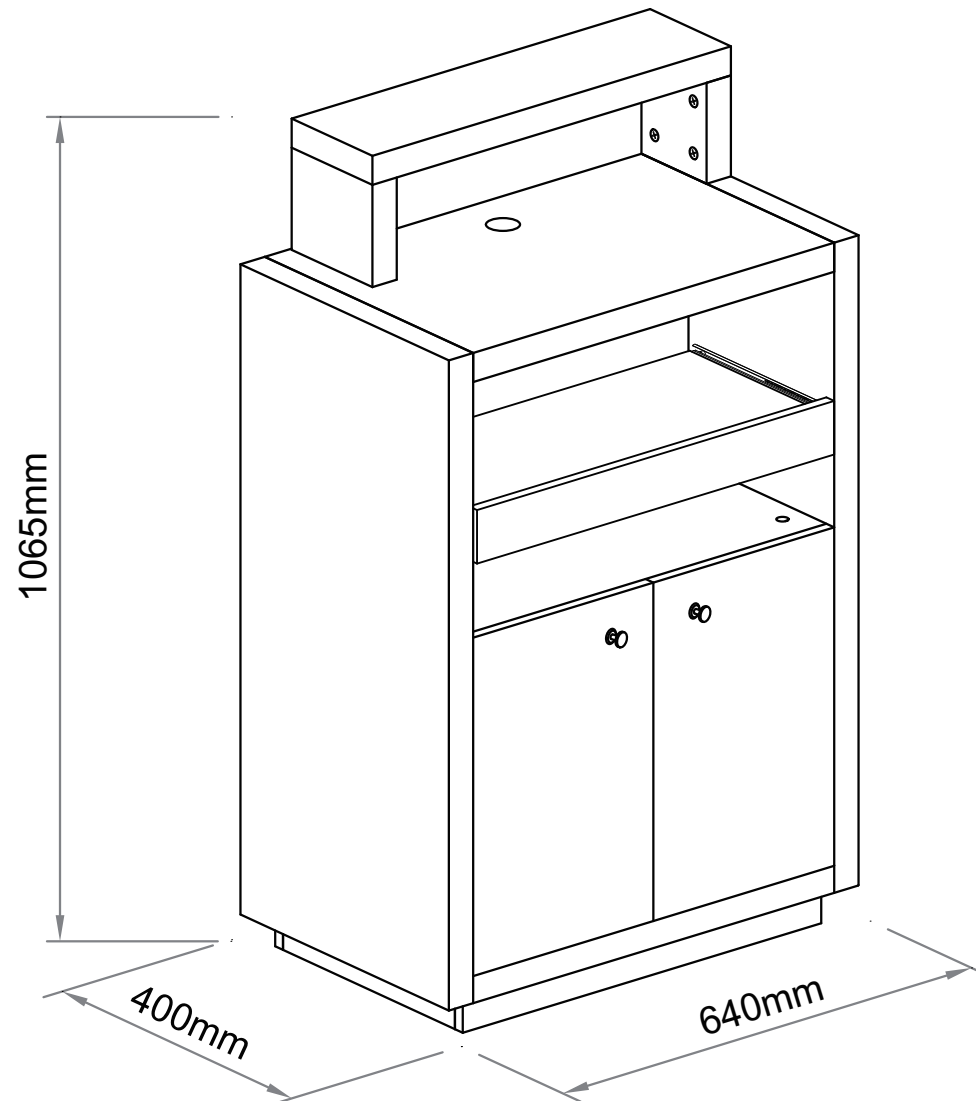
ASSEMBLY INSTRUCTIONS



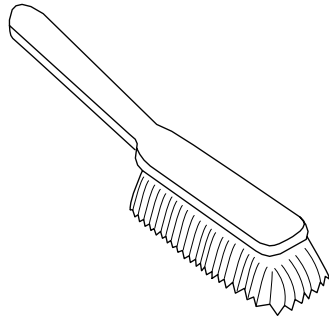
Step7

Insert the drawer into the Reception Desks.

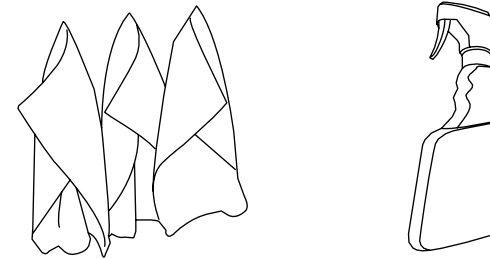
ASSEMBLY INSTRUCTIONS



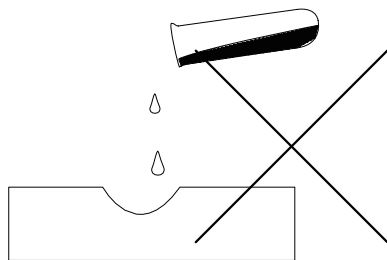
AFTERCARE INSTRUCTIONS



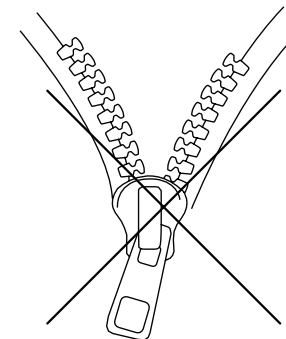
Brush away excess hair



Wipe clean with a cloth dampened in a mild leather cleaner or wipe dry with a clean cloth



Avoid the use of abrasives, bleaches or solvents



Never remove and wash leather covers

After an initial period of use, check all fastenings for any loosened screws etc. If found, please tightened appropriately