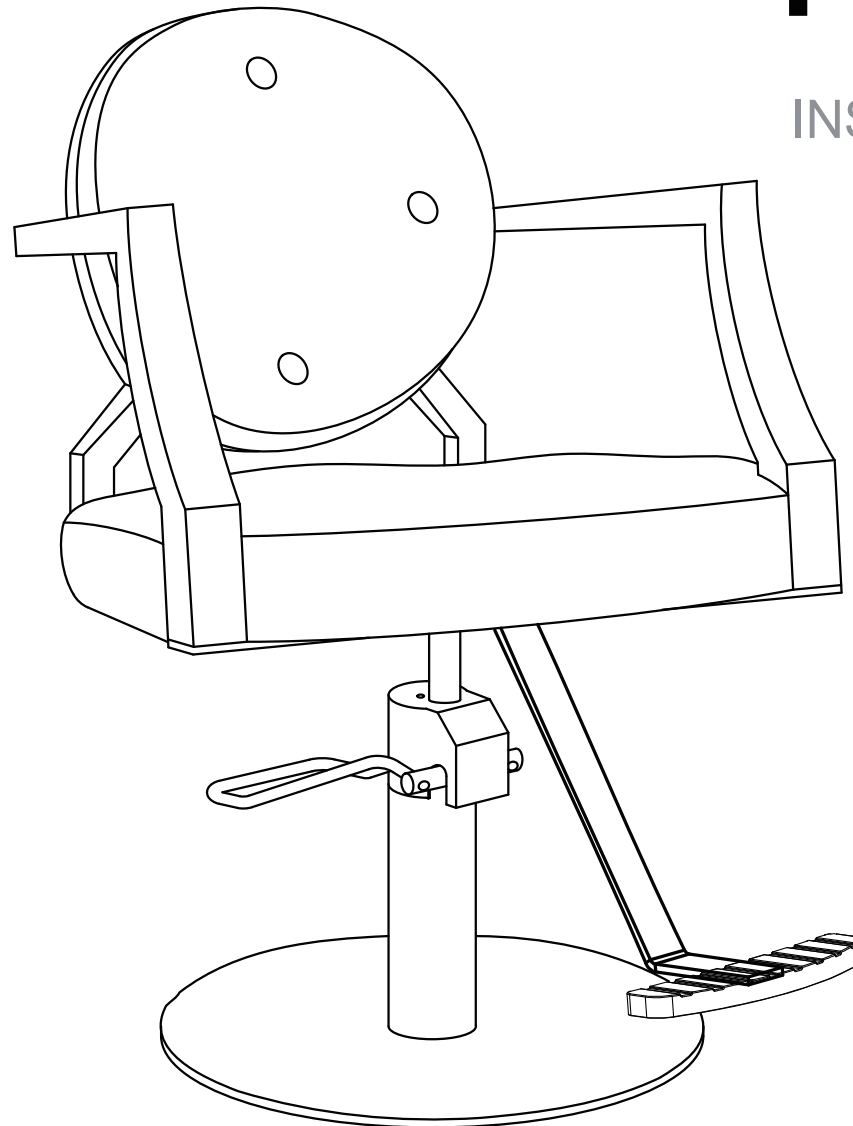


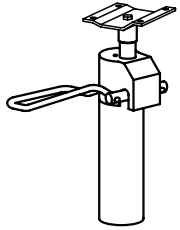
# Regent

1157  
INSTRUCTION MANUAL



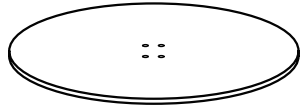
EN

## List of Parts & Tools



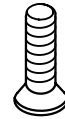
x1

Pump



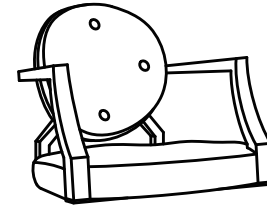
x1

Base



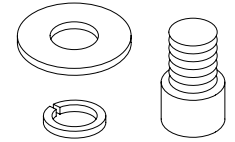
x4

M8x20mm



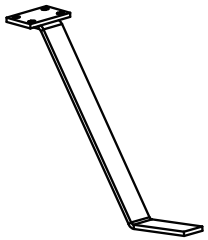
x1

Seat



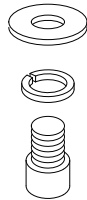
x4

M8 x 16 mm



x1

Footrest post



x4

M8x20mm



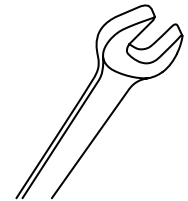
x1

Foot pedal



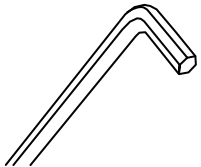
x2

M8x12mm



x1

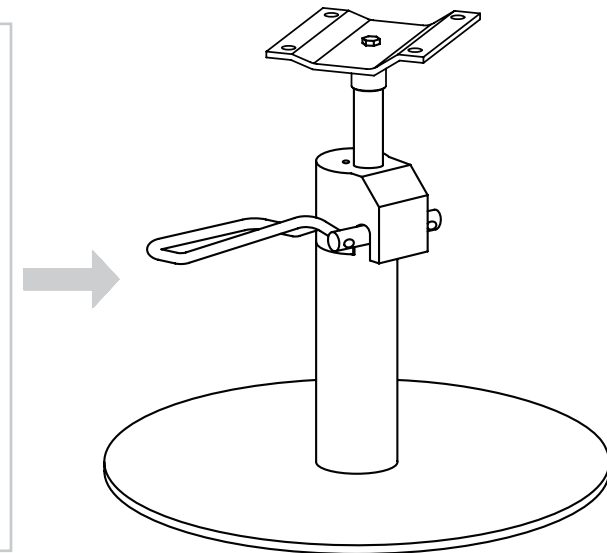
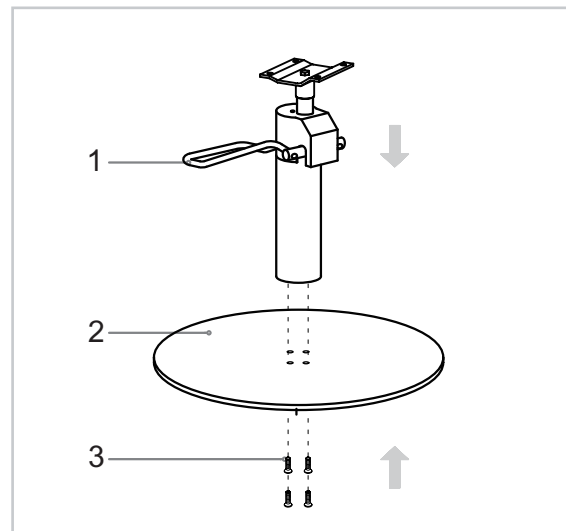
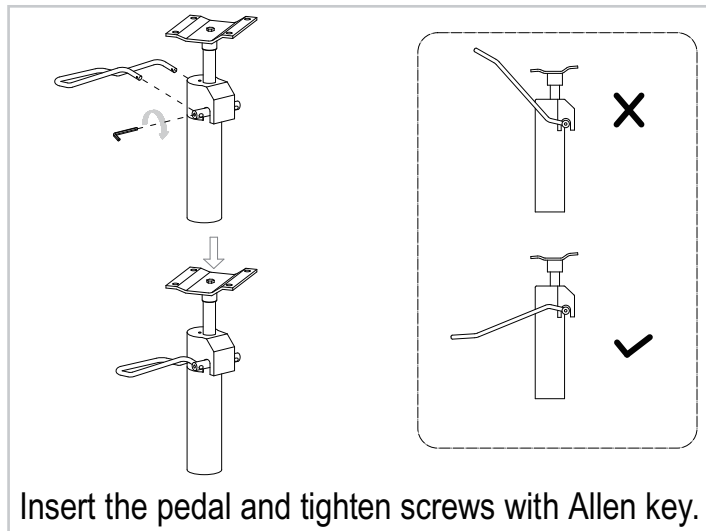
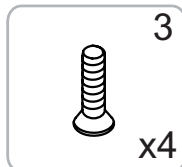
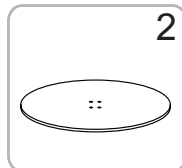
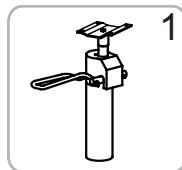
17mm



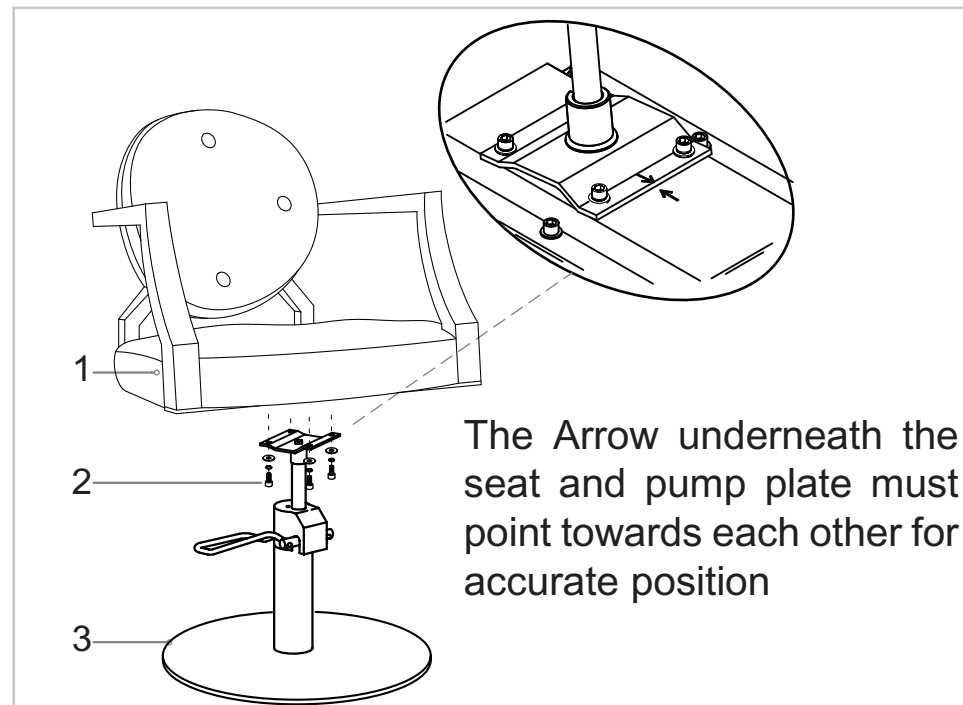
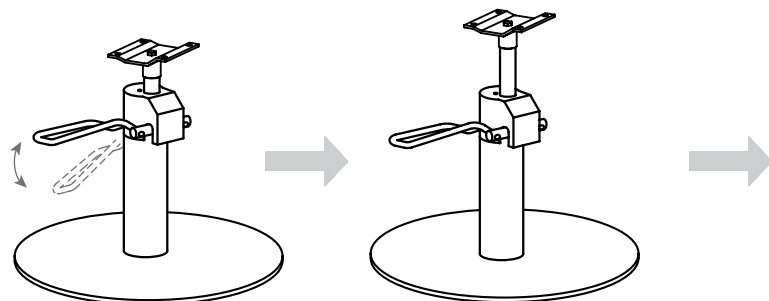
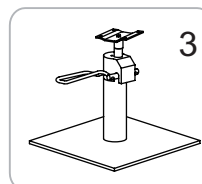
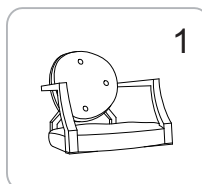
x1

6mm

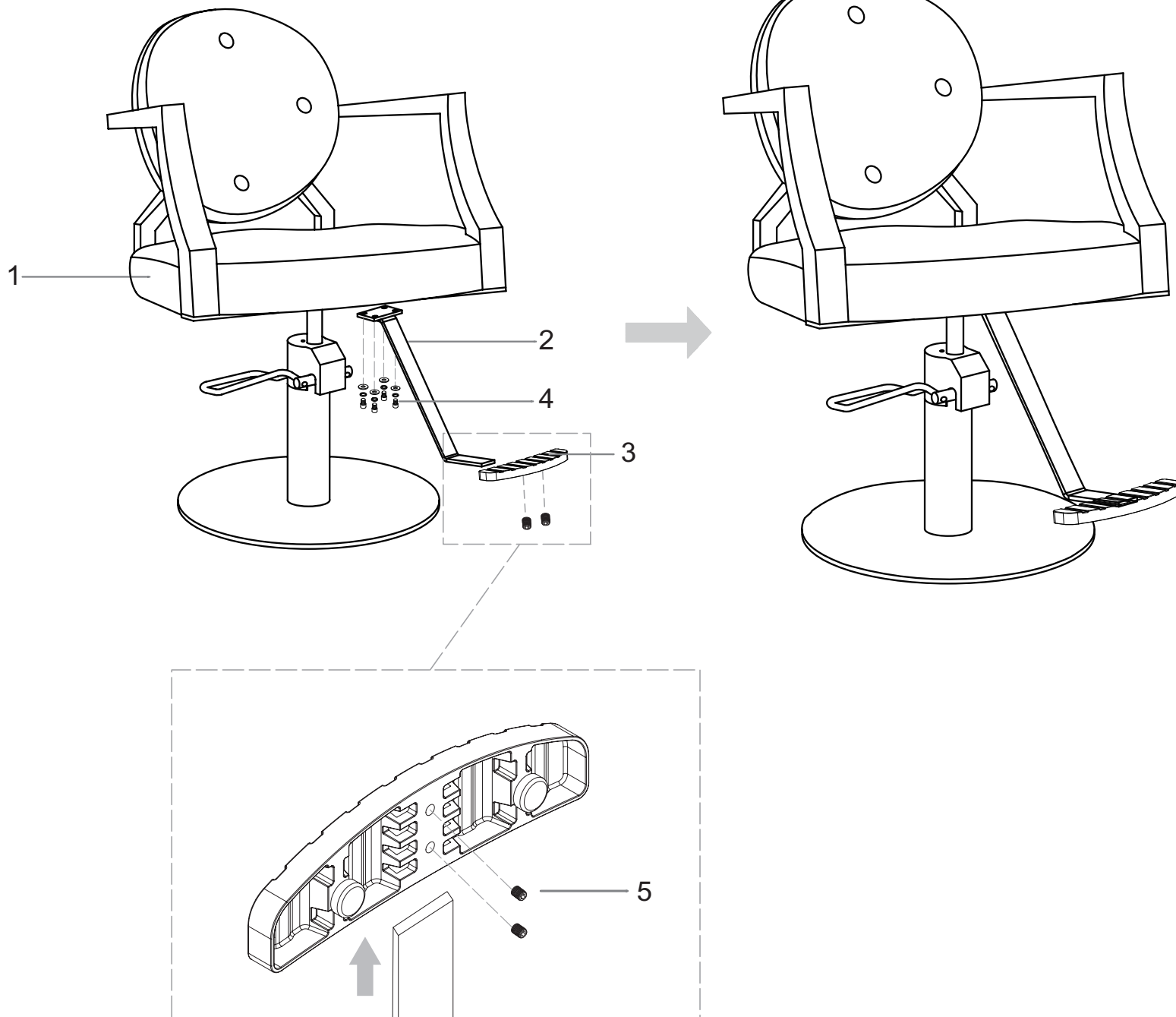
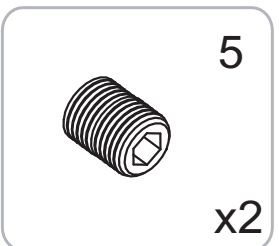
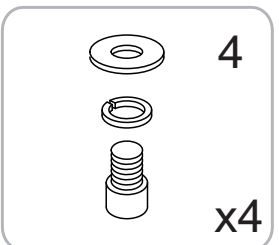
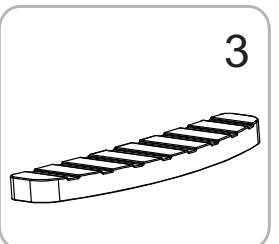
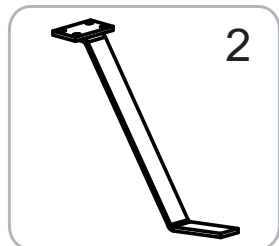
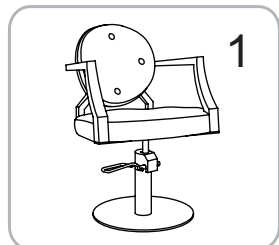
## Step 1



## Step 2



## Step 3



※After an initial period of use, check all fastenings for any loosened screws etc. If found, please tightened appropriately.