

Water Wonders NSI Slate™

1-2-3 Installation Instructions



Parts List

Item
Reference

Item Name

Item Photo

A. LED Light Bar



B. LED Transformer Wire



C. LED Remote Controller



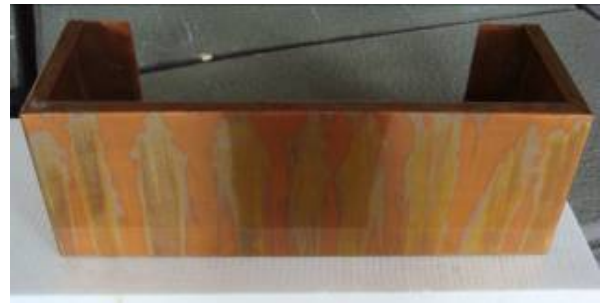
D. Wire Clip



E. Pump



F. Header



G. Shroud



H. Rock Tray



I. Wall Bracket



J. Tap Screws and EZ
Anchors™



K. Rocks



Water Wonders Assembly:

Tools Required:

Level
Pencil
Phillips Screwdriver
Measuring Tape



Decide where you would like to install your fountain.

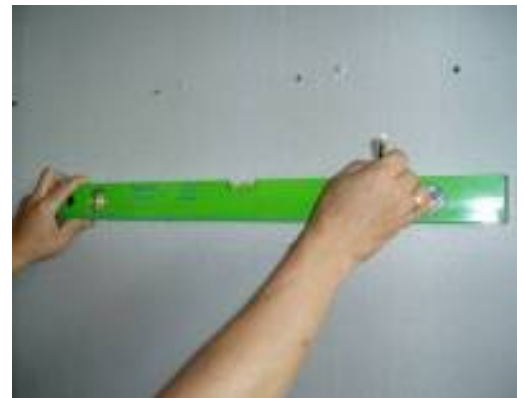
**** It is critical that your waterfall is level as this will ensure even water flow. ****

- a. Because of the relatively light weight nature of your new fountain, it is not necessary to mount it directly into wall studs.
- b. Mount indoors only and in a place that is not in direct sunlight.
- c. We recommend you install your waterfall above an electrical outlet. A Ground Fault Interrupt (GFI) outlet with an internal circuit breaker is preferred.

1. Mounting the Wall Bracket

Locate your level, Measuring Tape, and Screwdriver.

- a. Draw a line on the wall indicating the top of where you would like to mount your waterfall. See Fig 1.A.
- b. Using your measuring tape, measure from the top of your fountain down to the center of your wall bracket and record your measurement.
- c. Using the measurements obtained in point 'b', measuring down from the line drawn in point 'a', draw vertical line on the wall to indicate the location of the wall bracket sitting position. See Fig 1.B. Using a level, hold the Wall Bracket (I) to the wall with the top angled towards you. Mark both mounting holes on the wall. Remember to double-check your measurements. See Fig 1.C. & 1.D



1.A



1.B



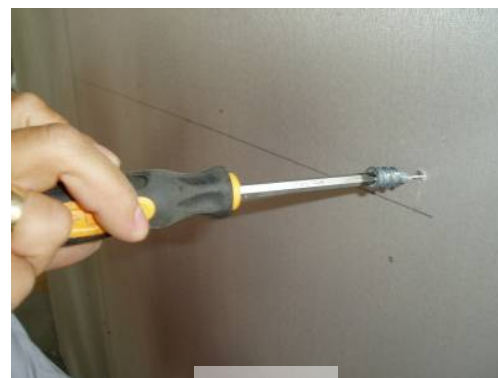
1.C



1.D

Locate EZ Anchors (J). The number of EZ Anchors must match the number of holes located on the Mounting Bracket.

- d. To install the EZ Anchors™ (J), gently tap or press the tip into the drywall and slowly screw the anchors into the wall. See Fig 1.E. Make sure the flat side of the anchor is flush with the wall. Do not over-tighten the anchors as this will render them ineffective, as well as damage the drywall. If you encounter a wall stud while installing an EZ Anchor™ (J), use the 1" mounting screw without the anchor. See Fig 1.F. We only suggest using the provided EZ Anchors™ (J) since each EZ Anchor™ (J) has a weight capacity of up to 50 pound. Plastic anchors are not an acceptable substitute. A correctly installed wall bracket is illustrated in Fig 1.G.



1.E



1.F



1.G

2. Installing the Waterfall

- a. Locate the Header (F) and Shroud (G). Install the Shroud (G) by carefully sliding it behind the panel and down onto the reservoir as shown in Figures 2.C & 2.D. Install the Header (F) by simply sliding it into the support rails located behind the fountain as shown in Figures 2.A & 2.B.



2.A



2.B



2.C



2.D

- b. To install the LED Light Bar (A), simply place the LED Light Bar (A) into the top of the Header (F) as shown in Figure 2.E. Then using the other Wire Clip (D) provided, peel and stick wire clip (D) to the inside of the Header (F) as shown in Figure 2.F & 2.G.



2.E



2.F



2.G

- c. Locate your Power Cord and plug into the transformer as shown in Fig 2.H. Unwind the cord and run it down the back of the fountain. Place the second Wire Clip (D) and stick to the center of the bracket located on your water feature and clip the Power Cord wire as noted in Figure 2.I & 2.J.



2.H



2.I



2.J

- d. After completely unwinding the LED Light Bar (A) and Pump power cords, lift your waterfall into place and engage the brackets by lowering it onto the Wall Bracket (I) as shown in Fig 2.K. After mounting your fountain to the wall, fill the reservoir with water (distilled water is strongly recommended).
- e. The water level must be maintained at least 1/2" above the pump. If the water level drops below the pump, damage may occur.



2.K

3. Operating the Waterfall

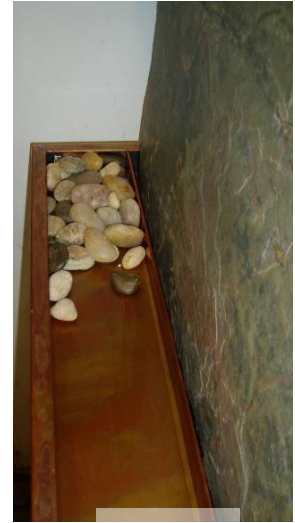
- a. After filling the fountain with water, plug the LED Light Bar (A) pump into the wall. As water begins to flow down the surface, guide the water with your hand or use a non-abrasive sponge until the water flows evenly over the entire waterfall surface. It may take a few minutes for the water to cover the entire waterfall surface.
- b. Install Rock Tray (H) and spread Rocks (K) as shown in Figures 3.A - 3.C.



3.A



3.B

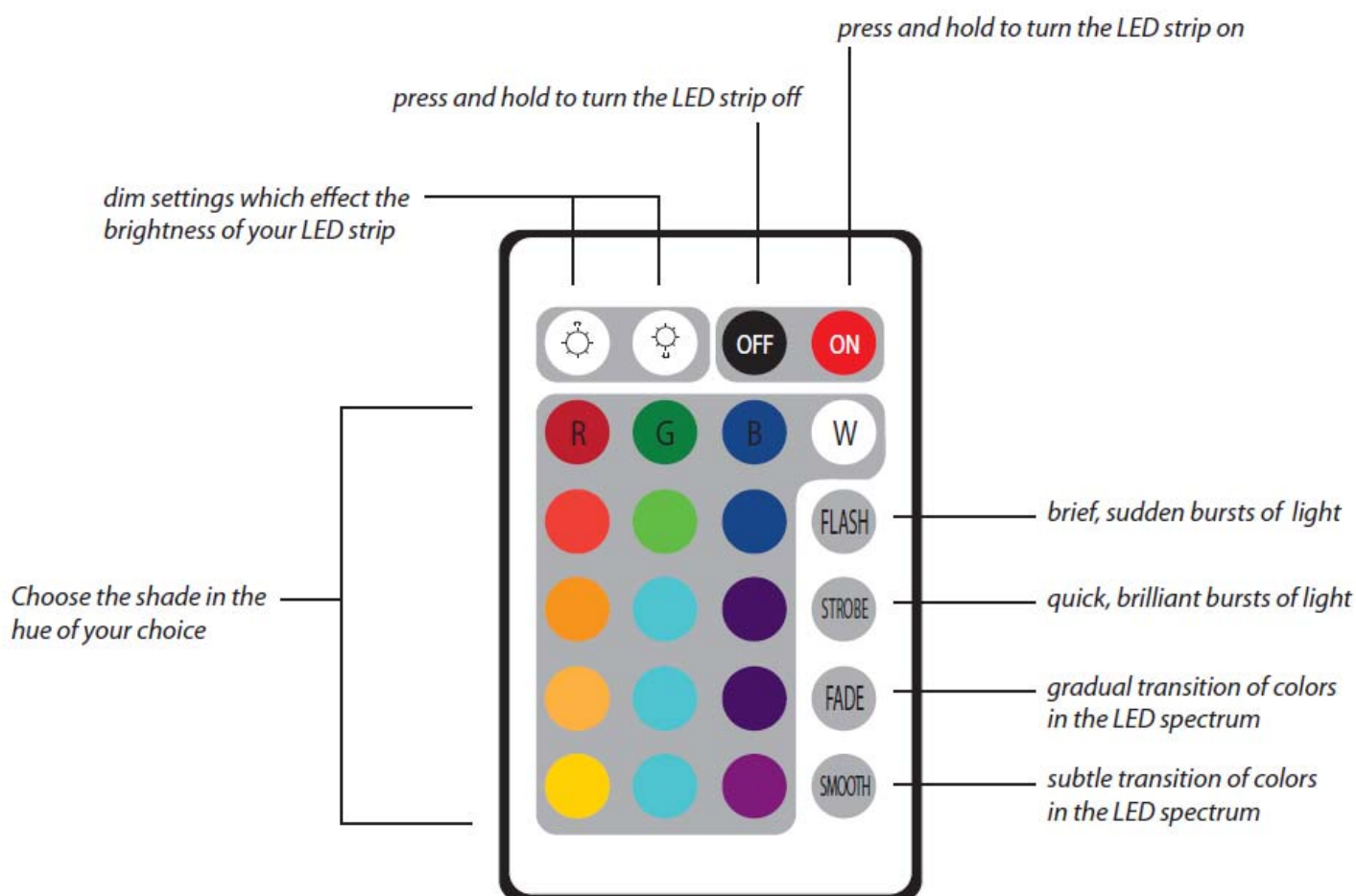


3.C

LED REMOTE

functions and modes

Make sure that the black sensor dangles just below the header of your water feature so the IR sensor is exposed. You must stand within a 12' range to engage the LED lighting via remote. For all functions, you must aim the remote directly in line with the sensor, then press and hold the button you wish to activate.



Warranty

Bluworld's Warranty has changed as of August 1, 2008 and supersedes all previous warranties for product purchased after August 1, 2008. If there is printed material within this shipment it is considered void and the Warranty as stated below is policy.

Bluworld product is warranted against defects that render it unfit for its reasonably intended use. This Warranty is not extended to cover use of the product for a purpose other than as intended, and if the product is used unreasonably, or for purposes other than as intended, or if it is altered, modified or repaired by a party other than Bluworld, then the Warranty shall be null and void. The Warranty is in effect for a period of six months beginning from the date of sale to the original retail purchaser and the rights under this Warranty are limited to the original retail purchaser. Bluworld will, upon written notification thereof, take commercially reasonable steps to correct such defects (see "manufacturers defects below"), at Bluworld's sole option, by suitable repair, replacement, or refund. Bluworld will not be responsible for the installation, labor or any other costs or expenses related to the re-installation of a warranted part, and such expenses are not covered by this warranty. THIS LIMITED WARRANTY IS EXCLUSIVE AND IN LIEU OF ANY IMPLIED WARRANTY OF MERCHANTABILITY, FITNESS FOR A PARTICULAR PURPOSE, OR OTHER WARRANTY OF QUALITY, WHETHER EXPRESS OR IMPLIED, EXCEPT FOR THE WARRANTY OF TITLE AGAINST PATENT INFRINGEMENT. Corrections of nonconformities, in the manner and for the period of time provided above, shall constitute fulfillment of all liabilities of Bluworld to any Dealer with respect to the goods, whether based on contract, negligence, and strict tort or otherwise. Bluworld contract sales personnel, including but not limited to authorized Dealers and Resellers (collectively, "Sales Personnel"), are not authorized to make warranties about Bluworld merchandise. ORAL STATEMENTS DO NOT CONSTITUTE WARRANTIES. Oral statements made by Bluworld employees or other Sales Personnel shall not be relied upon by a Dealer and shall not become part of any contract for sale. The entire sales contract between a Dealer and Bluworld will be set forth in the invoice and/or accompanying or reference documents provided by Bluworld to the Dealer or Sales Personnel. No other warranties are given beyond those set forth in those documents. Please be aware that you may have valuable rights under the state law in which you reside. Some of the provisions of this Warranty may be prohibited by your state law in which case your state law will govern and control. Some states do not allow the exclusion or limitation of incidental or consequential damages, so the above limitation or exclusion may not apply to you. Some states do not allow limitations on how long an implied warranty lasts, so the above limitations may not apply to you. This Warranty gives you specific legal rights, and you may also have other rights which vary from state to state.

Our products are warranted for a period of six months against defects in finish, pumps and other product performance issues. Light bulbs are not warranted. Our experience has shown that in practically 100% of incidents that any defect is apparent within a week of installation and use. Appearance defects should be noticed upon unpacking the fountain. We have found that finishes have 'failed' due to poor maintenance, local water conditions with minerals affecting the finish, attempts to clean with harsh chemicals or abrasive pads being used. Performance of water flow, spitting, and other 'leaks', are usually caused by debris getting into the fountain, buildup of minerals, algae from poor water or lack of maintenance. Pumps can also fail due to water levels not being maintained in the reservoir and this is not covered by the warranty.

Manufacturers Defect defined - A distinct and obvious flaw in the manufacturing of the product that inhibits the product's ability to function properly or a distinct and obvious flaw in the workmanship of the product that affects its physical appearance. Bluworld water features are manufactured under generally accepted manufacturing techniques as recognized by the International Organization of Standardization. Our products are hand made and hand finished thus minor scratches in materials within accepted ranges are not considered defects.

Slate- Many of our products contain natural slate. Slate can vary to a large degree and that individuality is what is considered to be unique and inherent to the beauty of the natural product as no two are exactly alike. Photos in our marketing materials are representative of our slate products but should not be relied on to duplicate the photo. We use natural mined slate in our products. Personal taste in the appearance of slate is not considered a reason for a return.