

DVD Player and Spa Installation Guide



**IT IS IMPORTANT THAT YOU READ AND FOLLOW
THIS INSTRUCTIONS.
PLEASE KEEP THIS MANUAL IN A SAFE PLACE**



DO NOT PLUG ANY POWER SUPPLY WHEN INSTALLING THE SPA

When using electrical appliances, basic safety precautions should always be followed to reduce the risk of fire, electric shock, and injury to persons, including the following:

- Read all instructions before using appliance.
- To avoid fire and shock hazard, plug the appliance directly into a 120V AC electrical outlet.
- Keep the cord out of heavy traffic area. To avoid fire hazard NEVER put the cord under rugs, near heat generating devices, such as radiators, stoves or heaters.
- To protect against electrical hazards DO NOT immerse in water or other liquids. Do not use near water.
- Close supervision is necessary when any appliance is used by or near children or disabled persons.
- Always unplug the Mini Spa before moving it.
- DO NOT drop or insert any object into any openings.
- Do not operate any appliance with a damaged cord or plug, if motor fan fails to rotate, after the appliance malfunctions, or if it has been dropped or damaged in any manner. Return appliance to manufacturer for examination, electrical or mechanical adjustment or repair.
- Any other use not recommended by the manufacturer may cause fire, electrical shock or injury to persons.
- NEVER use outdoors.
- Keep unit away from heated surfaces and open flames.
- DO NOT attempt to repair or adjust any electrical or mechanical functions on this unit. Doing so will void the warranty. The inside of the unit contains no user serviceable parts. All servicing should be performed by qualified personnel only.
- WARNING: To reduce the risk of fire or electrical shock, DO NOT use this Mini Spa with any solid-state speed control device.
- DO NOT place anything on top of the unit.

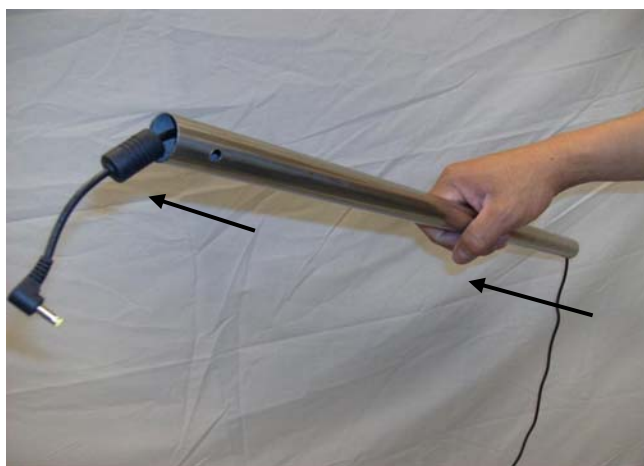
PLEASE READ AND SAVE THESE IMPORTANT SAFETY INSTRUCTIONS

A/ DVD player Installation

First of all you need to decide which side of the Spa Chair (left or right) the DVD Player will be installed. If the Spa is accessed from the left, then the DVD player should be installed on the right, and vice versa.

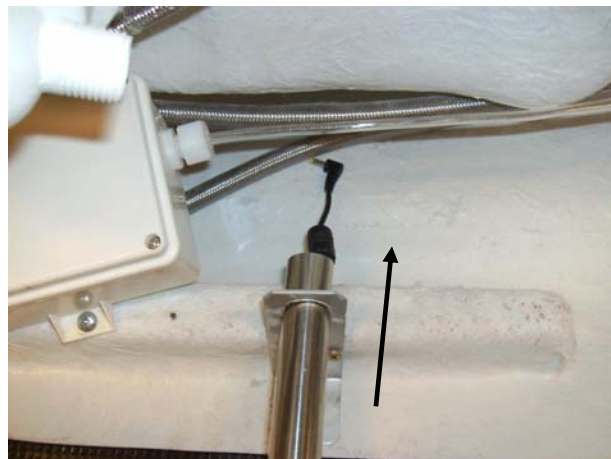
Trước hết quý khách phải xác định gắn máy DVD vào bên trái hay bên phải của ghế Spa. Thông thường nếu lối đi vào ghế bên trái thì nên gắn DVD vào bên phải và ngược lại để tránh vấn đề vướng khi ra vào ghế.

Step 1



Slip the DVD power cord through the metal pole. (Luồn sợi dây điện của máy DVD qua ống in-ox này)

Step 2a



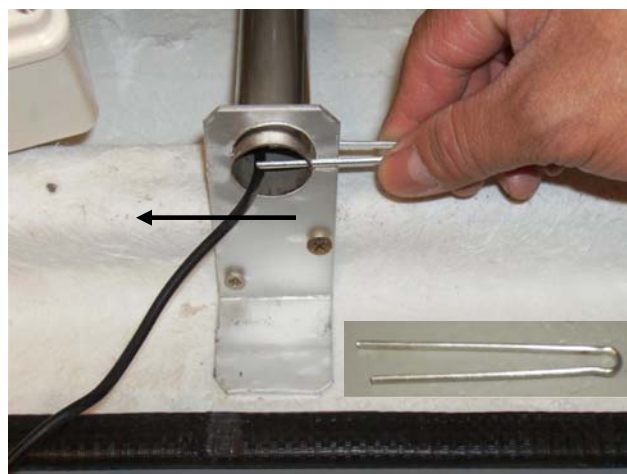
Slip the metal pole through the L shape hole on bottom of the tub. (Luồn ống in-ox cùng với dây điện qua cái lỗ tròn phía dưới tub)

Step 2b



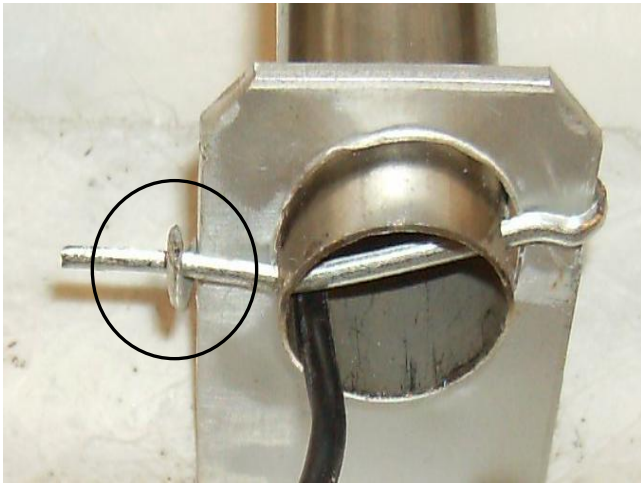
The metal pole will pass through the top hole as shown in picture. (Ống in-ox sẽ được luồn qua cái lỗ phía trên như trong hình trên)

Step 3



Lock the metal pole using the pin as shown in picture. (Khóa ống in-ox lại bằng cái pin như trong hình)

Step 4



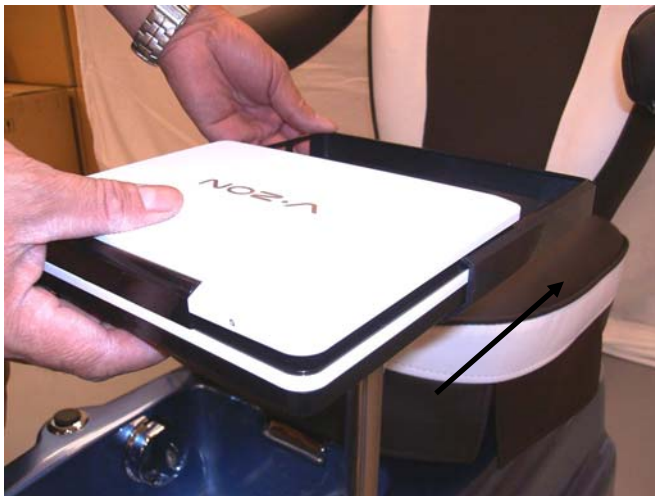
Use pliers to twist and lock the pin. Make sure the pole is locked well and cannot turn. (Dùng cái kềm để khóa cái pin lại như trong hình. Phải lock kỹ để ống inox không được xoay)

Step 5



Install DVD holder tray and lock it into the metal pole. (Lắp DVD tray và dùng cái pin khác để lock lại)

Step 6



Install the DVD player by sliding it into the tray. Make sure the audio control is in the open cut in the tray. (Gắn máy DVD vào khay nhựa bằng cách chuôi vào. Chú ý phía volume control là phía có lỗ cắt ở khay nhựa)

Step 7

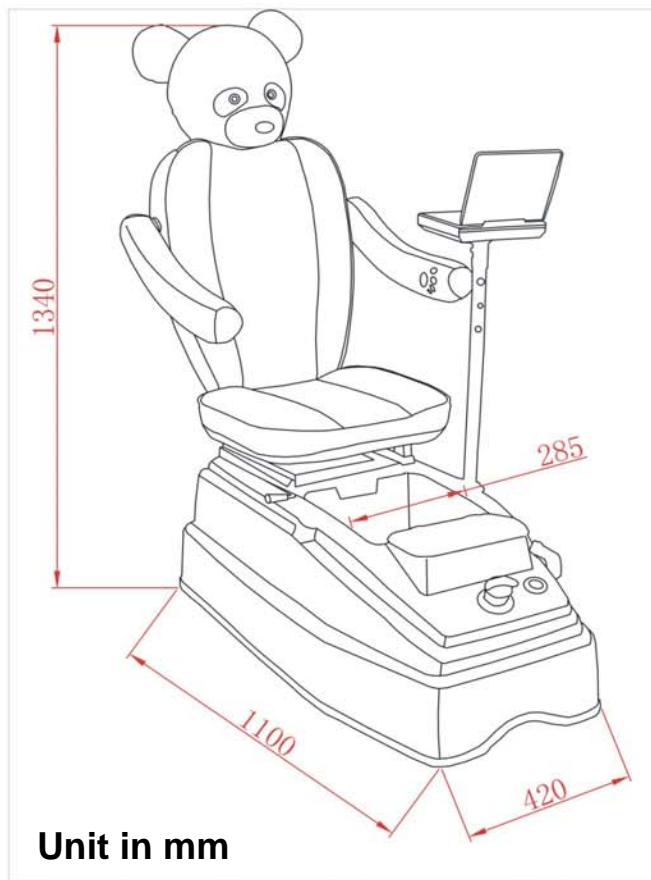


Plug the power cord into the DVD Player. This power cord will lock the DVD Player to the tray. (Gắn dây điện của máy DVD vào. Dây điện này sẽ khóa máy DVD lại với cái khay nhựa)

DVD Player Overall View



B/ Chair Installation



SPA 981 PACKING SIZE: 112 *55*65CM

SPA 981 NET WEIGHT: Base :24KG
Chair: 16KG

TUB CAPACITY:2-3 GALLONS

WATER SOURCE : $\frac{1}{2}$ PIPE THREAD H&C

ELECTRICAL:110V 10A 60HZ

Footrest

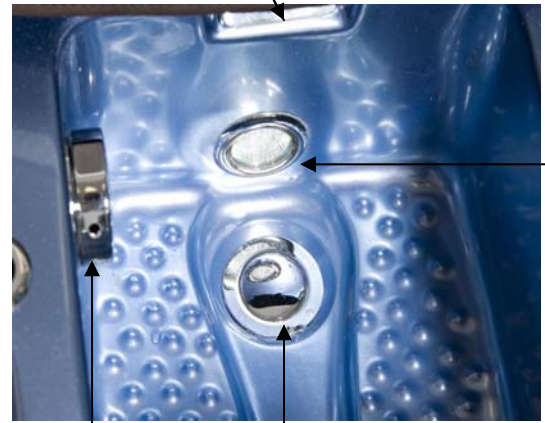


Pump Air Switch

Hot-Cold water Mixer

Air Switch reserves for Drain pump

Water Fall



Drain

Color Light

Overflow safety & Drain Valve



Shower Head



Hot

Drain

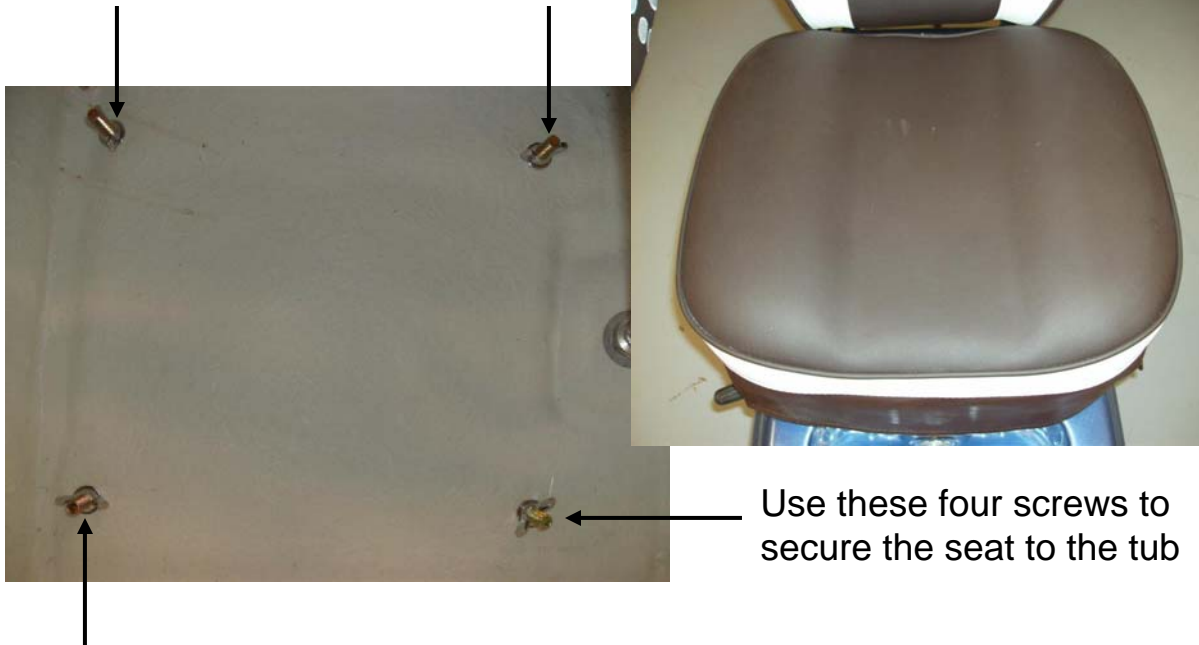
Cold



Lift this handle to slide the seat forward or backward

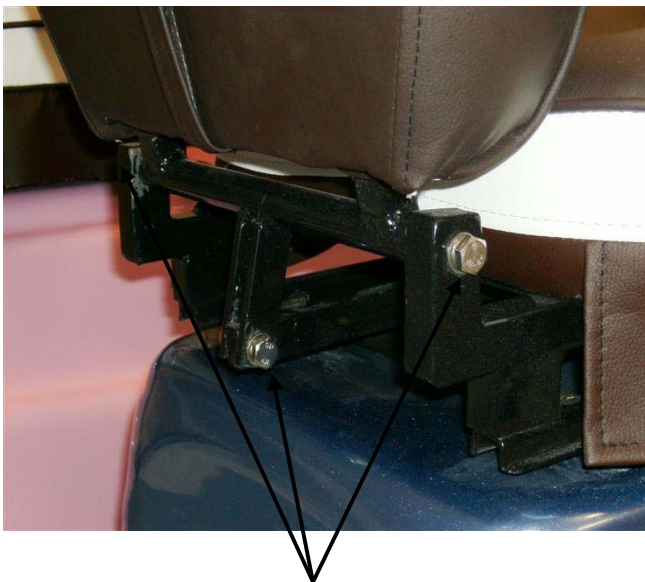
Step 1

Install the seat



Step 2

Install the back



Use these three screws to install the back chair

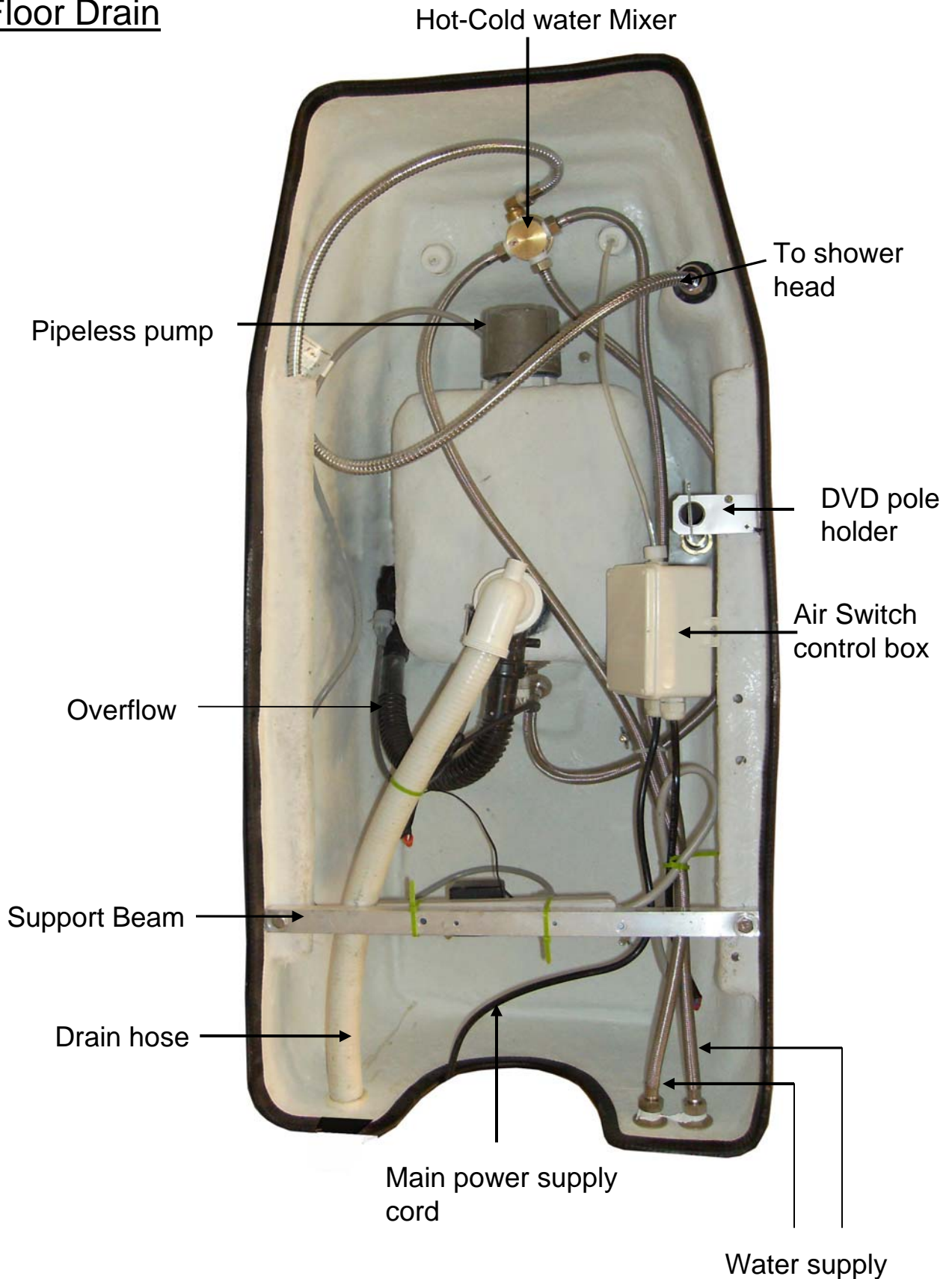
Note



The default angle is good enough. But if new adjustment is needed, then rotate this beam to desire angle of the back.



Floor Drain



Salons which have Wall Drain must use a Drain Pump. The Drain Pump is NOT included in this package. You can contact us or local Nail Suppliers to purchase one.