

Owner's manual

Table of Contents

Inspection of the Spa Zi - model Z-430	3
Introduction	4
Specification	5
Identified parts	6
Spa Installation & Fiber Glass arm assembly Instruction	7
Safety Instruction	8
Health risk warning	9
Operation & use Adjust footrest	10
Cleaning & Maintenance	11
Warranty & Service	12

Introduction

Spa Zi would like to thank you for your purchase of Z-430. With impressive design and highly quality control production, Z-430 of Spa Zi surpasses industry standard for performance and comfort.

With Spa Zi Z-430, you can be assured of uncompromised cleaning standard with safe pipeless technology; Pipeless jet features a convenient, removable screen plate to allow easy cleaning. You will be pleased with our world-class massage chair, a full function of kneading, tapping, rolling system that provide your clients the most relaxing moment. All parts in Z-430 are made to the highest safety standard.

With minimal maintenance and care, your Spa Zi Z-430 will give you years of carefree service.

Specifications:

. Dimension: (with seat back)	55" L x 29" W x 53" H
. Net weight:	141 lbs
. Shipping weight:	163 lbs
. Capacity of tub:	5 US gallons
. Spa Base:	Fiber glass with steel frame
. Power source:	120V AC, 12 Amp, 60 Hz



Identified parts.



1. Chair with massage system
2. Hand shower
3. Water spout
4. On/Off Air Switch
5. Massage & recline control
6. Hot & Cold mixing valve

7. Adjustable footrest
8. Air control
9. LED light
10. Drain plug
11. Drain control Knob
12. Jet motor

Spa Installation Instruction:

Electrical Service

An 120 V, 60 Hz, 12 Amp GFCI protected grounded circuit must be used to supply power to the Spa Zi Z-430. The Service must performed by qualified licensed electrician.

Water Supply

All plumbing connections must conform to local codes.

Hot water supply temperature

The hot water supply temperature must not exceed 150 degree F (65 degree C).
Adjust your hot water heater accordingly.

Hot and Cold water supply lines

Carefully connecting the coming water Supply lines to the appropriate hoses located on the back of the Z-430. It is recommended to shut off all valves during installation.

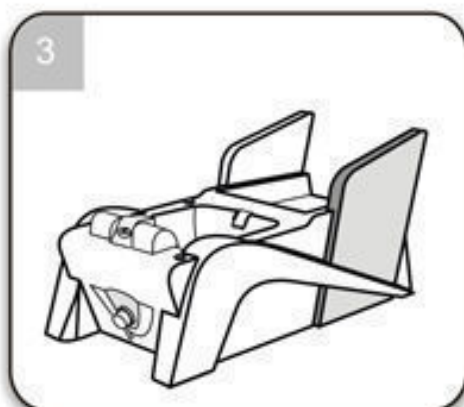
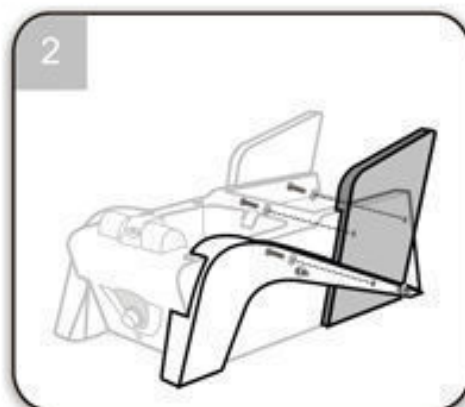
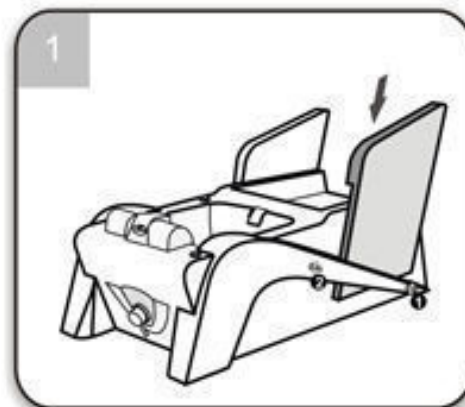
Fiber glass arm assembly instruction:

Loosen two (2) screws ❶ & ❷

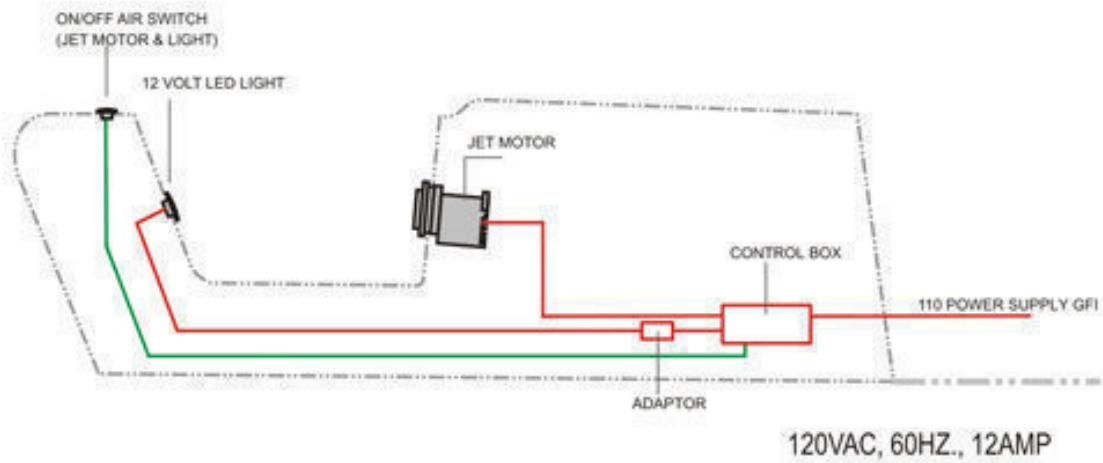
as show in Fig. 1

Slide slowly the fiberglass arm
into the slot as shown in Fig. 1

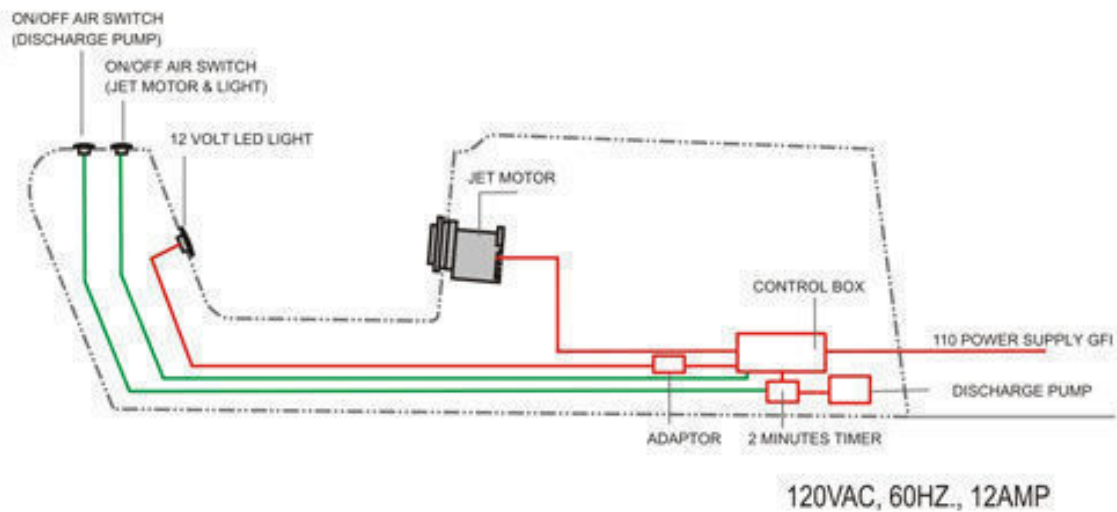
Secure the arm by bolts provided
as shown in Fig. 2 & 3



Electric wiring diagram- w/o Drain pump



Electric wiring diagram- with Drain pump



Massage chair assembly: *(See details in chair user's manual)*



Drain line Installation:

Warning

The Spa must be installed by a qualified, licensed plumber.
Failure to comply may result in serious injuries and
Warranty will be voided.

- **Gravity drain:**
Spa Zi Z-430 uses a standard gravity drain. A floor drain is recommended
P-Trap is supplied.
- **Discharge pump:** (Optional)
Discharge pump is installed by manufacturer

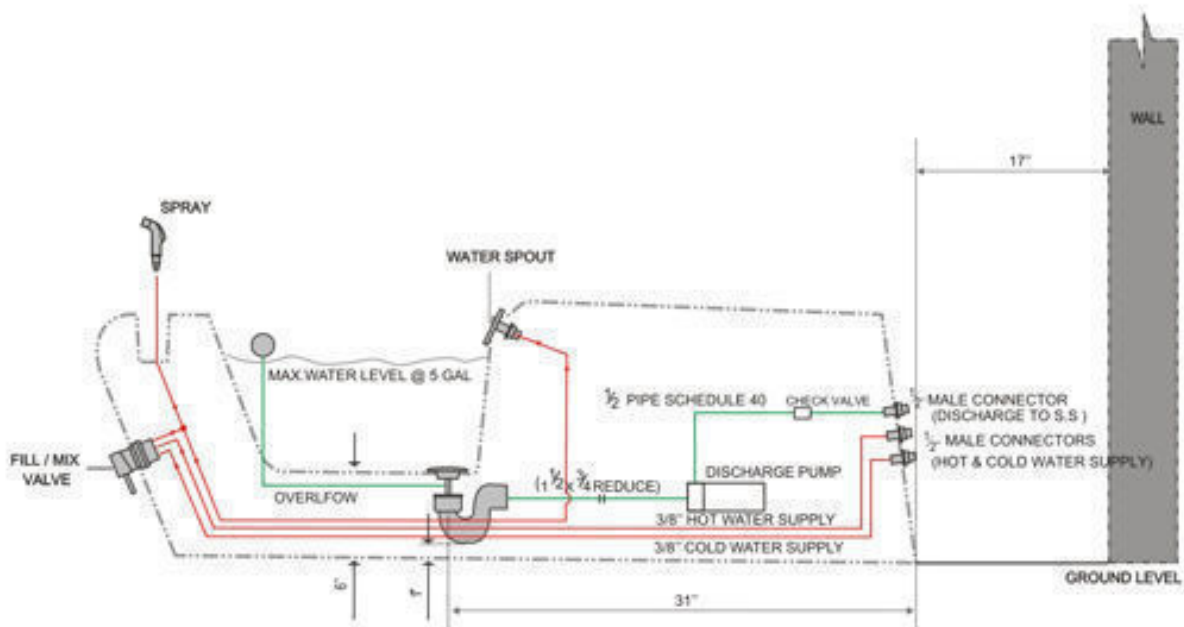
Safety instruction

Caution: Basic precaution should always be observed, including the followings:

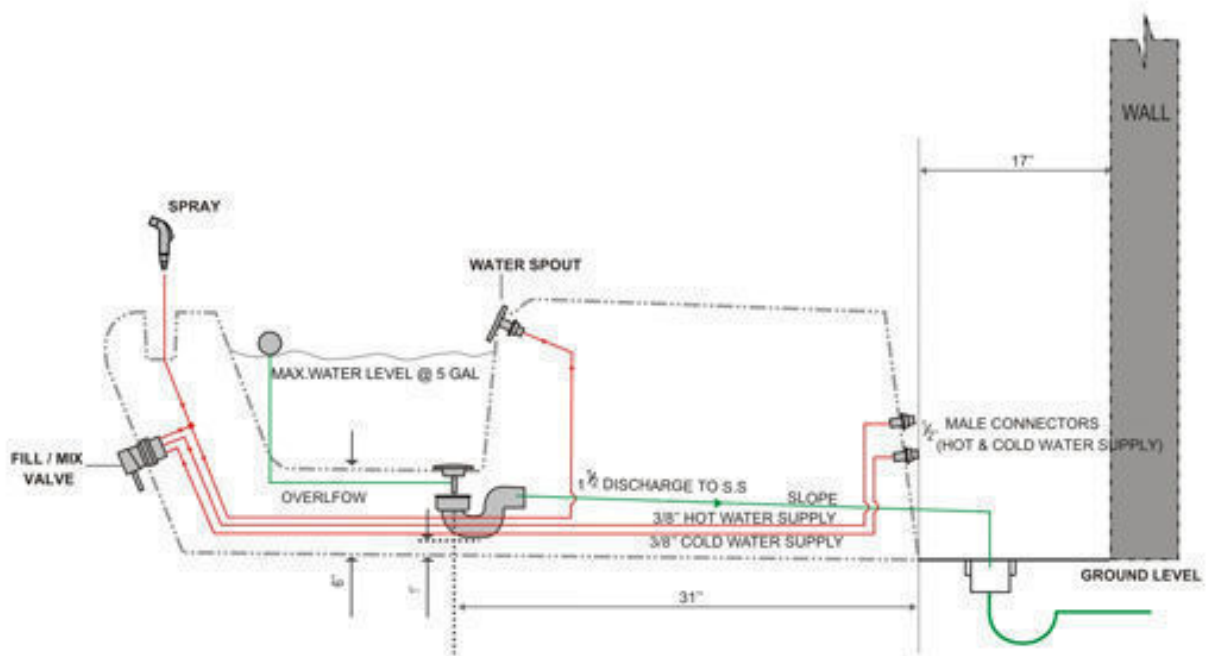
Those with the following conditions, but no limited to, should consult with their physician prior to using this product:

- A - Phalignant tumor
 - B - Heart disease
 - C - Back disease or back trouble from injury by accident.
-
- Always enter and exit pedicure spa slowly and carefully.
 - Do not permit children to use this unit unless they are supervised at all time.
 - Do not use outdoors
 - Do not use this unit if abnormal sound is heard.
 - Make sure all operation switches are in OFF position before connecting the power cord to an electrical outlet.

Pump Drain Installation



Gravity Drain Installation



Health risk warning

Individuals whose feet or legs are inflamed or have open wounds should not be allowed to use the pedicure spa at any time.

Nail technicians should advise clients to consult their physician before using the pedicure spa if there is any sign of fungal infection, swelling, fracture, or persistent pain. In some cases diabetics may experience improved circulation in their feet, but should first consult their physician prior to receiving a pedicure. The client's massage and pedicure spa experience should be pleasant and comfortable.

Warning

Grounding instructions and methods:

We strongly recommend that all electrical outlets connected to the pedicure spas to include a GFCI device (Ground Fault Circuit Interrupters) in order to reduce the risk of electric shock.

In the event of break down or malfunction, the grounding provides a path of the least resistance for electrical current to reduce the risk of electric shock.

Operation and use

1 - Fill Sink:

Your Spa Zi Z-430 is provided with a single hot and cold mixing valve, located on the Front Center of the Spa. This is a pressure balance valve that requires you to lift the handle to start the water flow and turn the valve to the temperature level desired. Fill water until the jet motor is completely submerged.

2 - Start

Press ON / OFF power button, located next to the footrest, to turn jet motor and Spa light. To stop the whirlpool function, press the button again.

3 - Adjust air control

The air control button is situated on the Spa base, just under the chair. You can control the supply of air to the jet motor by turning this chrome knob in a clockwise direction.

4 - Hand shower

The Spa Zi is equipped with a self held sprayer, located under to footrest. To activate the hand shower pull the hand shower, lift handle of hot and cold mixing valve and depress the thumb control on the sprayer handle.

5 - Adjust footrest

Spa Zi allows you to adjust the height of the footrest by lifting its front end up. To have the footrest back to normal position, push the footrest side way (see picture below).

UP Position



Lift up the Footrest

NORMAL Position



Push Footrest to the left and press down

6 - Drain whirlpool sink

A - Gravity Drain

Open the drain plug by turning the control knob on the far right of Spa base.

B - Discharge pump (Optional)

Open the drain plug by turning the control knob. Press discharge pump button, located on front side of spa base.

7 - Massage chair

Please see chair Use's Manual for operation and use of the chair.

Cleaning & Maintenance

Pedicure Spa owner should always contact your local governing agency for their specific cleaning, disinfecting requirements and regulations for pedicure spas. For your clients safety, always use the regulations as a minimum standard for cleaning and disinfecting. Combining your state's standards with the regimen listed below may provide your clients with a safe and healthy pedicure spa environment experience.

See Exhibit A for the completed list of state board contacts

Below is the recommended Cleaning and Disinfection Procedures for Foot Spa Basins in Salons by Environmental Protection Agency (EPA) - December 2006

Customer precautions - protecting the client

1. **Check the condition of the client's feet and legs:** If open sores or skin wounds are present (including insect bites, scratches, scabbed-over wounds, or any condition that weakens the skin barrier), explain to the client why they should not use the foot bath.
2. **Complete pedicure or wax after the foot bath soak:** Any procedure that risks damage to a client's skin should not be done before soaking feet in the foot spa basin.

Step by step instructions for disinfecting pedicure foot spa equipment

After Each Client: (this can take place any time after the client's feet are out of the footbath, while feet are massaged, toes are painted, or other opportunities)

1. Drain the water from the foot spa basin or bowl and remove any visible debris.
2. Clean the surfaces of the foot spa with soap or detergent, rinse with clean water, and drain.
3. After cleaning, disinfect* the surface with an EPA-registered hospital disinfectant (for description) according to the manufacturer's directions on the label. Surfaces must remain wet with the disinfectant for **10 minutes or the time stated on the label**, which may be shorter.
* For whirlpool foot spas, air-jet basins, "pipe-less" foot spas, and other circulating spas: It is best to disinfect by filling the basin with clean water, adding the appropriate amount of liquid disinfectant, and turning the unit on to **circulate** the disinfectant for the entire contact time.
4. After disinfection, drain and rinse with clean water.

Nightly:

* For whirlpool foot spas, air-jet basins, "pipe-less" foot spas, and other circulating spas:

1. **Remove** the filter screen, inlet jets, and all other removable parts from the basin and clean out any debris trapped behind or in them.
2. Using a brush, **scrub** these parts with soap or disinfectant (following cleaning directions).
3. **Rinse** the removed parts with clean water and place them back in to the basin apparatus.
4. **Fill** the basin with clean water and add an **EPA-registered hospital disinfectant**, following label directions. Turn the unit on and **circulate** the system with the liquid for 10 minutes, or the label- indicated time if different. (The whirlpool mechanism of the tub must be operating for the entire disinfection period so the piping and internal components that contain hidden bacteria are disinfected).
5. **After disinfection, drain, rinse, and air dry.**

* For simple basins (no circulation):

1. **Drain** the basin and remove any visible debris.
2. **Scrub** the bowl with a clean brush and soap for disinfectant (following cleaning directions). **Rinse and drain.**
3. Disinfect basin surfaces with an **EPA-registered hospital disinfectant**, following manufacturer's instruction. Surfaces must remain wet with the disinfectant for 10 minutes or the contact time stated on the label.
4. **Drain** the basin, **rinse** with clean water, and let air-dry.

Important additional measures

- * **Follow your state guidelines and regulations:** Some states require a weekly flush of the whirlpool mechanism with bleach and that the bleach remain in contact for over eight hours. Salons should consult state cosmetology regulations to make sure they are in compliance.
- * **Read all labels and instruction manuals:** Always follow label directions for disinfectant products, and consult operating manuals for foot spa basins. Care should be taken to use appropriate doses of products to prevent damage to foot spas.
- * **Know the condition of your equipment:** If your whirlpool foot spa has not been regularly cleaned and disinfected, you may need to do more than just the maintenance steps listed above to remove bacterial buildup from the system. Consult the foot spa manufacturer for further information. A higher level EPA-registered disinfectant, such as those labeled "Tuberculocides," may be used initially (refer to the listing of these products on the [List B: EPA Registered Tuberculocide Products Effective Against Mycobacterium tuberculosis \(PDF\)](#) (33pp, 167.1 KB). Once the system has been adequately disinfected, regular maintenance with cleaning and use of a hospital disinfectant, as described in this document, may be used.

Warranty & Service

Purchasers **MUST** mail in Registration Form in order to have the warranty to be effective.

Spa Zi warrants to the original purchaser that the new pedicure spa will be defect free during the Standard Warranty Period (listed below). The shipping date and the Serial Number on the back of each spa will justify the start of the warranty period for the product. The warranty is null and void if the pedicure spa is taken from its initial place of installation, or it is not installed in accordance with federal, state or local codes and ordinances. Also, this warranty does not apply if the pedicure spa has been subject to misapplication, improper installation or maintenance, negligence, improper cleaning or other circumstances beyond Spa Zi 's control.

Warranty

1. Limited Three Year warranty on Spa Shell.
2. Limited One Year warranty on the Jet motor.
3. Limited One Year Parts-Only warranty which covers the Hydraulic System, Discharge Pump, Massage System and All Electrical Components.
4. Spa Zi will pay shipping charges on all replacement parts during the first 90 Days of the Warranty Period. After 90 days, the consumer is responsible for all labour and shipping costs incurred.

Exclusions

1. Damage to pump parts and/ or motor parts due to obstruction in plumbing lines etc.
2. Staining, fading or discoloration of fiber glass surfaces due to exposure and / or the use of harmful cleaning agents or chemicals.
3. Staining, fading or discoloration caused by improper or poor water additives not related to the maintenance of proper water are not covered by this warranty.
4. Staining, fading or discoloration of the seat, armrests or footrests.
5. Freight damage without stating on BOL, misuse, neglect, unauthorized repairs, accident, natural disaster and unreasonable use.

Service

1. The Dealer shall forward all warranty-related matters to our Customer Service Department.
2. Serial Number and Original Invoice must accompany all warranty claims.
3. Customers are responsible for shipping defective parts back to Spa Zi. These parts must be packaged correctly in order to protect against any further damage.
4. All parts are to be shipped by UPS Ground Service - average 2-5 days.
5. All defective parts must be shipped back to Spa Zi within 30 days of receiving the new replacement parts or warranty will be void.
6. Any warranty claim that cannot be done if you did not mail in Registration form .
7. Any service performed on the product without Spa Zi authorization will also void the Warranty.
8. Each service call from the customer will be assigned a Claim Number. The Claim Number will stay open until the problem is resolved.

No dealer or other person has any authority to bind Spa Zi to charges or additions to this warranty or its products. Accordingly, Spa Zi is not responsible for such warranties of representations.

STATE	DEPARTMENT/ AGENCY	PHONE	FAX	WEBSITE
Alabama	Board Of Cosmetology	(800) 815-7453 (334) 242-1918	(334) 242-1926	www.aboc.state.al.us
Alaska	Board Of Barbers & Hairdressers	(907) 465-2547	(907) 465-2974	www.dced.state.ak.us/occ/pbah.htm
Arizona	State Board Of Cosmetology	(480)784-4539	(480) 784-4962	www.cosmetology.state.az.us
Arkansas	Arkansas State Board of Cosmetology	(501) 682-2168	(501) 682-5640	http://www.arkansas.gov/cos
California	State Board Of Barbering & Cosmetology	(916) 574-8150	(916) 445-8893	www.barbercosmo.ca.gov
Colorado	Office Of Barber & Cosmetology Licensing	(303) 894-7772	(303) 894-7764	www.dora.state.co.us/barbers_cosmetologists
Connecticut	Dept. Of Public Health	(860) 509-7603	(860) 509-7607	www.dph.state.ct.us/licensure/licensure.htm
Delaware	Board Of Cosmetology & Barbering	(302) 744-4518	(302) 739-2711	www.professionallicensing.state.de.us/boards/cosmetology
District Of Columbia	Board Of Barbers & Cosmetology	(202) 442-4320	(202) 442-4528	None
Florida	Dept. Of Business & Professional Regulation	(850) 487-1395	(850) 921-0038	www.myfloridalicense.com
Georgia	State Board Of Cosmetology	(478) 207-2440	(478) 207-1354	www.sos.state.ga.us/plb/cosmetology
Hawaii	Board Of Barbering & Cosmetology	(808) 586-3000	(808) 586-2874	www.hawaii.gov/dcca/areas/pvl
Idaho	State Board Of Cosmetology	(208) 334-3233	(208) 334-3945	www.ibol.idaho.gov/cos.htm
Illinois	Dept. Of Financial & Professional Regulation	(217) 785-0800	(217) 782-7645	www.idfpr.com
Indiana	Professional Licensing Agency	(317)234-3031	(317) 233-5559	www.in.gov/pla/bandc/cosmetology
Iowa	Board Of Cosmetology Arts & Sciences	(515)281-4416	(515) 281-3121	www.idph.state.ia.us/licensure
Kansas	State Board Of Cosmetology	(785) 296-3155	(785) 296-3002	www.accesskansas.org/kboc
Kentucky	State Board Of Hairdressers & Cosmetologists	(502) 564-4262	(502) 564-0481	www.kbhc.ky.gov
Louisiana	State Board Of Cosmetology	(225) 756-3404	(225) 756-3410	www.lsbclouisiana.gov
Maine	State Board Of Barbering & Cosmetology	(207) 624-8603	(207) 624-8637	www.state.me.us/pfr/_olr
Maryland	Board Of Barbers And Cosmetologists	(410) 230-6320	(410) 333-6763	www.dlir.state.md.us/license
Massachusetts	Board Of Cosmetologists	(617) 727-9940	(617) 727-2197	www.state.ma.us/reg
Michigan	Dept. Of Consumer & Industry Services	(517) 241-9288	(517) 373-3085	www.michigan.gov/cosmetology

Board Of Cosmetology

Minnesota	Dept. Of Commerce, Licensing Div. Attn: Cosmetology	(651) 201-2742	(651) 617-2601	www.bceboard.state.mn.us
Mississippi	State Board Of Cosmetology	(601) 987-6840	(601) 987-6840	www.msbc.state.ms.us
Missouri	State Board Of Cosmetology	(573) 751-1052	(573) 751-8167	www.pr.mo.qgc/cosbar/asp
Montana	Board Of Barbers & Cosmetologists	(406) 841-2333	(406) 841-2323	www.discoveringmontana.com/dli/cos
Nebraska	Dept. Of Health & Human Services Regulation & Licensure Credentialing Div.	(402) 471-2133	(402) 471-3577	www.hhs.state.ne.us/crl/crlindex.htm
Nevada	State Board Of Cosmetology	(702) 486-6542	(702) 369-8064	www.cosmetology.nv.gov
New Hampshire	State Board Of Barbering, Cosmetology & Esthetics	(603) 271-3608	(603) 271-8889	www.nh.gov/cosmet
New Jersey	Board Of Cosmetology & Hairstyling	(973) 504-6338	(973) 648-3536	www.nj.gov/lps/opva
New Mexico	Dept. Of State Division Of Licensing Services	(518) 474-4429	(505) 476-4665	www.dos.state.nm.us
North Carolina	State Board Of Cosmetic Art Examiners	(919) 733-4117	(919) 733-4127	www.cosmetology.state.nc.us
North Dakota	Board Of Cosmetology	(701) 224-9800	(701) 222-8756	http://www.legis.nd.gov/information/acdata/html/title32.html
Ohio	State Board Of Cosmetology	(614) 466-3834	(614) 644-6880	http://www.state.oh.us/cos
Oklahoma	State Board Of Cosmetology	(405) 521-2441	(405) 521-2440	www.cosmo.state.ok.us
Oregon	Board Of Cosmetology	(503) 378-8667	(503) 585-9114	www.hlo.state.or.us
Pennsylvania	Bureau Of Professional And Occupational Affairs	(717) 787-8503	(717) 705-5540	www.dos.state.pa.us/cosmet
Rhode Island	Div. Of Professional Regulation	(401) 222-2511	(401) 222-1272	www.health.state.ri.us
South Carolina	Board Of Cosmetology	(803) 896-4494	(803) 896-4484	www.llr.state.sc.us
South Dakota	Cosmetology Commission	(605) 773-6193	(605) 773-7175	www.state.sd.us/dol/boards/cos
Tennessee	State Board Of Cosmetology	(615) 741-2515	(615) 741-1310	www.state.tn.us/commerce/boards/cosmo/
Texas	Department Of Licensing & Regulation	(512) 463-6599	(512) 475-2871	www.license.state.tx.us
Utah	Occupational & Professional Licensing Div.	(866) 275-3675 (801) 530-6511	(801) 530-6511	www.dopl.utah.gov
Vermont	Board Of Barbers & Cosmetologists	(802) 828-1134	(802) 828-2496	www.vtprofessionals.org

Virginia	Board For Barbers & Cosmetology	(804) 367-8509	(804) 367-6295	www.dpor.virginia.gov
Washington	Dept. Of Licensing, Cosmetology Unit	(506) 664-6626	(506) 664-2550	www.dol.wa.gov/professions.htm
West Virginia	Board Of Barbers & Cosmetologists	(304) 558-2924	(304) 558-3450	www.wvdhhr.org/wvbc
Wisconsin	Barbering & Cosmetology Examining Board	(608) 266-5511	(608) 267-3816	www.drl.wi.gov
Wyoming	Board Of Cosmetology	(307) 777-3534	(307) 777-3681	www.cosmetology.state.wy.us