

OWNERS MANUAL.



IMPORTANT WARNING

INSTRUCTIONS PERTAINING TO A RISK OF FIRE INJURY TO PERSON OR ELECTRIC SHOCK

WARNING: When using this unit, basic precautions should always be followed, including the following:

1. READ AND FOLLOW ALL INSTRUCTIONS
2. WARNING: Risk of accidental injury or drowning. Children or handicapped persons should not use pedicure spa without adult supervision.
3. WARNING: To avoid injury, exercise care when using pedicure spa.
4. WARNING: Risk of electric shock: Do not permit electric appliances (such as hair dryer, lamp, telephone, radio, or television) to be within 5 ft. (1.5) of this unit.
5. DANGER: RISK OF ELECTRIC SHOCK: This unit should be grounded.
6. WARNING: Use the spa only for its intended purpose: to fill and drain appliance for foot and ankle hydro massage. DO NOT use attachments not recommended by manufacturer..
7. RISK OF ELECTRIC SHOCK: Disconnect from the electrical supply before servicing.

WARNING

1. DO NOT reach any electrical object that has fallen into water. Unplug immediately.
2. DO NOT drop or insert anything into jet opening.
3. DO NOT operate this unit without the complete jet assembly installed or without water filled 1 inch above the jets.
4. DO NOT overfill the basin.
5. DO NOT stand on or in the basin, or on the foot rest.
6. DO NOT leave this appliance unattended when in operation.
7. Keep the electrical cord away from heated surfaces.
8. Connect this appliance only to a properly grounded outlet.
9. To avoid injury, exercise care when entering or exiting the pedicure spa.
10. It is important to clean and disinfect the jets and basin after every use. Unless thoroughly cleaned after each use, bath residue will buildup within the jets and on the surface area of any whirlpool pedicure spa, which can promote the growth of infectious bacteria.
11. Hydrotherapy should be pleasant and comfortable. Should you experience any pain or discomfort while using the pedicure spa, discontinue use immediately and consult your physician.
12. Consult your physician if your diabetic, have poor circulation, or if any area of your feet or legs is inflamed, has an open wound or if you have any questions whether you should be using hydro massage equipment.
13. Pro Spa recommends a qualified plumber and electrician install your pedicure spa.
14. Water supply temperature to the spa MUST NOT exceed 106 F (41 C). Water temperature in excess of 106 F (41 C) may be injurious to users health. Check water temperature and adjust prior to use.

INSTALLER / OWNER BEARS ALL RESPONSIBILITIES TO COMPLY WITH STATE AND LOCAL CODES WHEN INSTALLING THIS PRODUCT. FAILURE TO COMPLY WITH THESE INSTRUCTIONS MAY VOID WARRANTY.

INSTALLATION & UTILITY INFORMATION

Electrical Service:

A 120V, 60 Hz, 15 Amp GFCI protected grounded circuit must be used to supply power to the pedicure spa. (220V if ordered in 220V configuration)

Water Supply:

All plumbing connections must conform to local codes.

Normal water pressure of 30 to 80 PSI is required to correctly fill the basin to the proper level.

The hot water supply temperature must not exceed 150 F (65 C). Adjust your hot water heater accordingly.

For hot and cold water supply fittings and power drain fittings location, see figure 1 below.

Carefully connect the incoming water supply lines to the appropriate fittings located on the back of the pedicure spa. Shut-off valves are recommended.

Backflow Protection Devices for Facets with Side Spray; Check valves comply ANSI/ASME A112.18.3M, A112.18.1M, and CSA B125

ANSI/ASME A112.18.3M (Performance Requirements for Backflow Protection Devices and Systems in Plumbing Fixture Fittings) is applicable to plumbing fixture fittings with outlets not protected by an air gap. included in the possible range of applications are fittings with hose connected outlets, fittings with pullout spout, hand held showers, shampoo fittings and deck-mounted fittings. ASME A112.18.3M is now referenced in ASME A112.18.1M (Plumbing Fixture Fittings) and CSA B125. Check valves are listed to both standards with the Canadian Standards Association, IAPMO and UL.

ANSI - American National Standards Institute

ASME - American Society of Mechanical Engineers

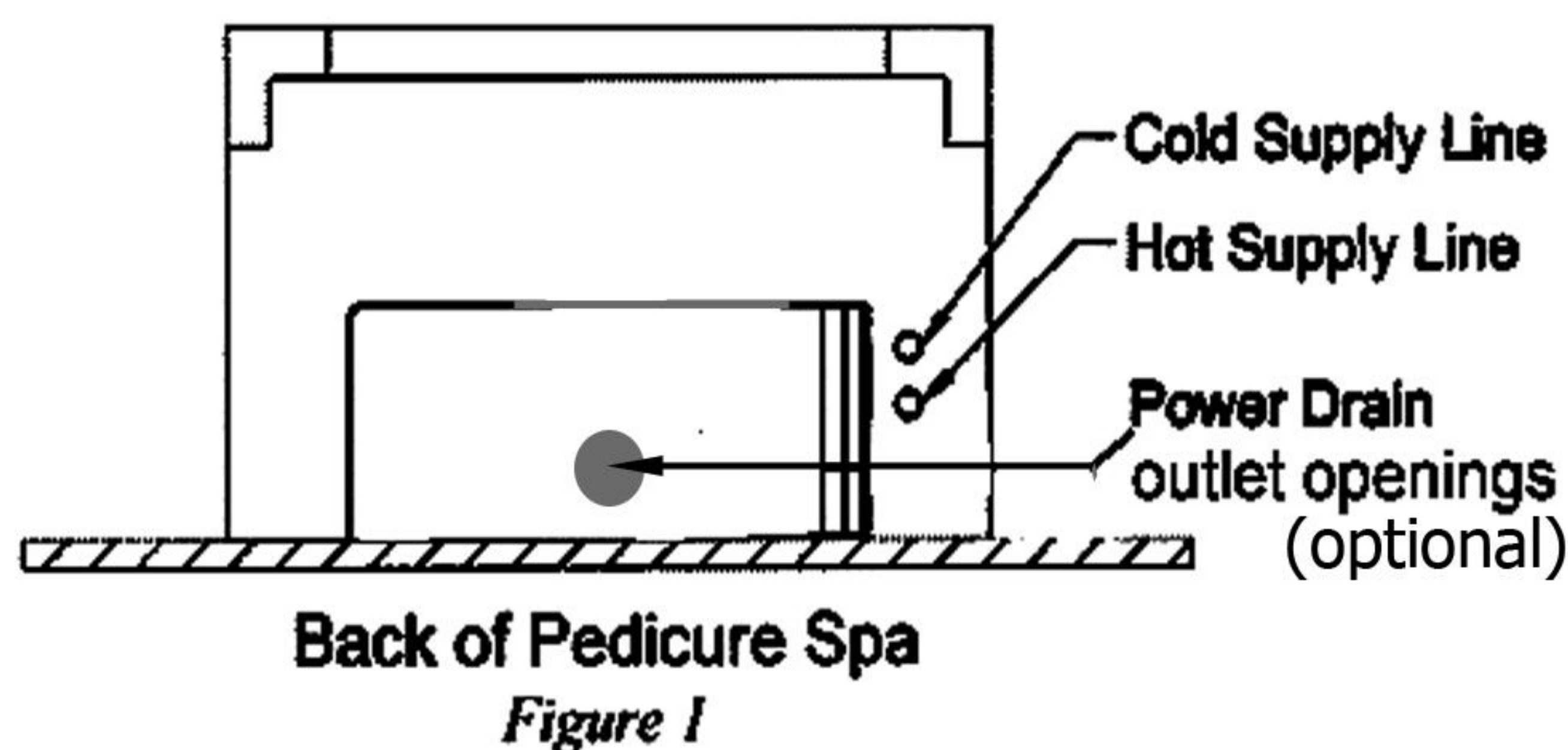
CSA - Canadian Standards Association

IAPMO - International Association of Plumbing and Mechanical Officials

UL - Underwriters Laboratory

The pedicure spa drain must meet local plumbing codes. Check valve for drain (not provided) must be installed by a licensed plumber.

Pedicure spa must be securely fastened to the floor as shown in figure 2 below. Fasten the pedicure spa to the floor with at least two fasteners, one in the middle plastic support and one in the rear plastic support.



OPERATING INSTRUCTIONS

NOTE: Before activating the Pipeless™ system, make sure the basin is clean and disinfected.

TO FILL

1. Close the overflow/waste control by turning it clockwise.
2. Lift upwards on the faucet/mixing handle located on the front of the Pedicure Spa.
3. Turn the handle in a counter-clockwise direction for warm water or clockwise for cold as indicated by the red (hot) and blue (cold) markings around the handle.

4. Fill the basin to approximately 1" (25 mm) above both jets.

Note: both jets must be totally submerged in order to function properly.

5. If during operation of the whirlpool, water level decreases, simply add more water.

TO START

1. Push the hydro-jet On/Off control button, then release.
2. The 2 speed on/off control button activates the hydro-jet.
3. Pushing once operates the hydro-jets on high speed, the second "push" lowers the hydro-jets to medium speed. Pushing three times deactivates the unit.

TO DRAIN

1. Do not drain the tub until the hydro-jet are OFF.
2. Turn the overflow/waste control counter-clockwise until it stops. This lifts the drain stop and drains water from the tub. If the pedicure spa is equipped with the optional Power Drain Pump feature, open the drain by turning the drain handle in a counter-clockwise direction until it stops. Wait 10 seconds.
3. Press the button marked "Discharge" on the front panel. The water level will lower as water is pumped out of the basin.
4. Turn the pump off by pressing the "Discharge" button on the front panel once the basin is fully drained.

(Note: the PDP will automatically shut off after 2-1/2 minutes. We recommend turning off the pump manually if all water has drained before automatic shut-off).

WARNING: It is extremely important to follow the cleaning instructions located on the following page. Failure to clean the pedicure spa adequately can result in bacterial contamination and cause the pedicure spa to not work properly. Please consult your local and state codes concerning pedicure chair cleaning for further requirements.

CARE AND MAINTENANCE

BASIN, SHROUD, AND DRAIN

Approved cleaners: Clean with a mild liquid detergent and warm water solution.

- ♦ Paint, tar, or other difficult stains can be removed with paint thinner, turpentine, or isopropyl alcohol (rubbing alcohol). Lightly wipe the stain with a clean cloth which has been moistened with solution. Blot the area with a dry cloth and allow to dry.
- ♦ To avoid discoloration, cleaners containing petroleum distillates must not remain on the surface.
- ♦ To avoid scratching and dulling of the surface, never use abrasive cleaners
- ♦ Major scratches and gouges will require professional refinishing.

CHAIR AND FABRIC

- ♦ Approved cleaners: Spot clean with mild liquid detergent and warm water, and dry air. For stubborn stains use an alcohol-based solutions like 409.
- ♦ Recommend Disinfectants: Pro Spa chair disinfectant
- ♦ Dry cleanable by conventional methods using commercial dry cleaning solvent.
- ♦ Ordinary dirt, smudges and water soluble stains, such as coffee, tea, ice, soft drinks, milk, beer, wine, and other can be removed with mild soap an water. Use a clean cloth or soft sponge to dab the stain with the solution. Remove the soap solution by wiping the area with cloth and clean water. Dry with a soft lint free cloth or towel.
- ♦ Very stubborn stains or non-water soluble stains can be removed with a mild solvent such as naphtha (lighter fluid, paint thinner). Lightly wipe the stain with a clean cloth which has been moistened with solvent. Blot the area with a dry cloth and allow to dry.
- ♦ Many ink and magic marker stains can be removed using a 50/50 solution of Wisk detergent and rubbing alcohol. Dab lightly with a cloth which has been moistened with solution. As the ink loosens, blot the area with a dry cloth. Repeat as necessary. Rinse with a cloth dampened with clean water, and dry with a soft cloth.
- ♦ Avoid using cleaner containing abrasives or bleach. Disinfectants can be used provided they are evaluated beforehand.

WARNING: Do not place nail care products on the pedicure spa.

WARNING: Extended exposure to chemicals can damage the pedicure spa, shroud and/or fabric. Failure to comply with these instructions can cause damage to the pedicure spa and void the warranty.

CLEANING/DISINFECTION

Please check with your state board for required cleaning and disinfecting procedures. It is extremely important to clean and disinfect your pedicure spa **after each pedicure and after the last pedicure of the day**. Regular cleaning will help keep your pedicure spa in good working condition. Proper and continuous cleaning will kill harmful bacteria and germs that can cause infection.

Each jet assembly can be easily removed from it's casing and reassembled by following the steps shown in the illustration below.

PREPARATION & CLEANING

- ♦ Drain the bathing well area of all water.
- ♦ Rotate the jet assemblies counter clockwise and remove them from the jet case.
- ♦ Disassemble the jet assemblies and place them in the sink.
- ♦ Use a clean cloth and a non-abrasive antibacterial cleaner to clean the jet assembly removing any visible soil.
- ♦ Rinse the jet assembly pieces with tap water using the hand shower.

DISINFECTION

- ♦ Spray the surface of the basin, jet cases, jet assembly pieces, drain stopper and overflow mechanism until thoroughly coated with EPA registered disinfectant
- ♦ Once coated, allow the pieces to set for required disinfection period
- ♦ Rinse disinfectant from all surfaces.

RE-ASSEMBLY

- ♦ Dry the jet assembly pieces, jet cases, basin, drain, stopper, overflow mechanism and remove any pooled water with a clean cloth.
- ♦ Reassemble the jet assemblies and reinsert them into jet cases, rotate them in a clockwise manner to securely lock them into position.

NEVER use abrasive cleaners on any surface area.

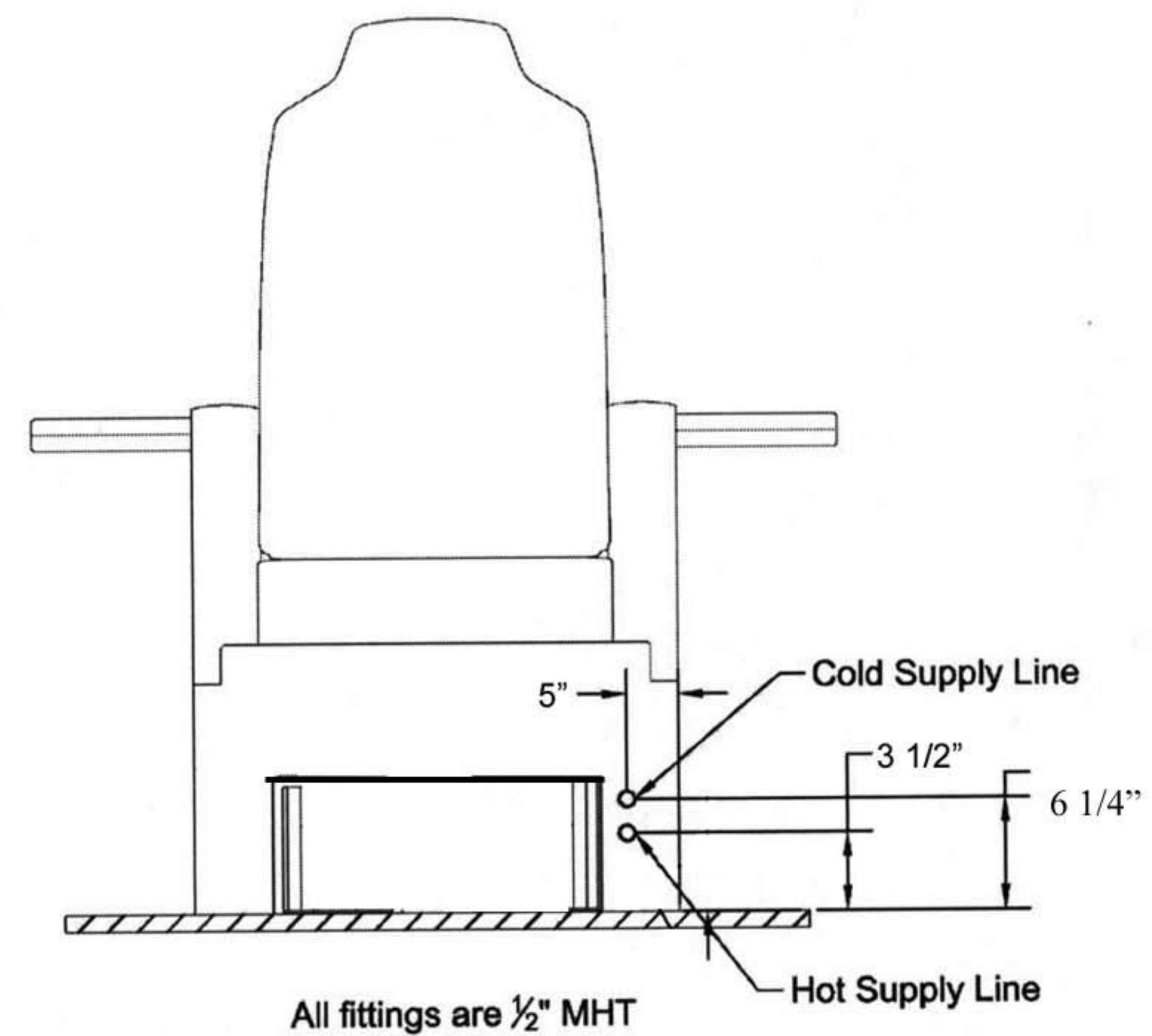


Illustration #1

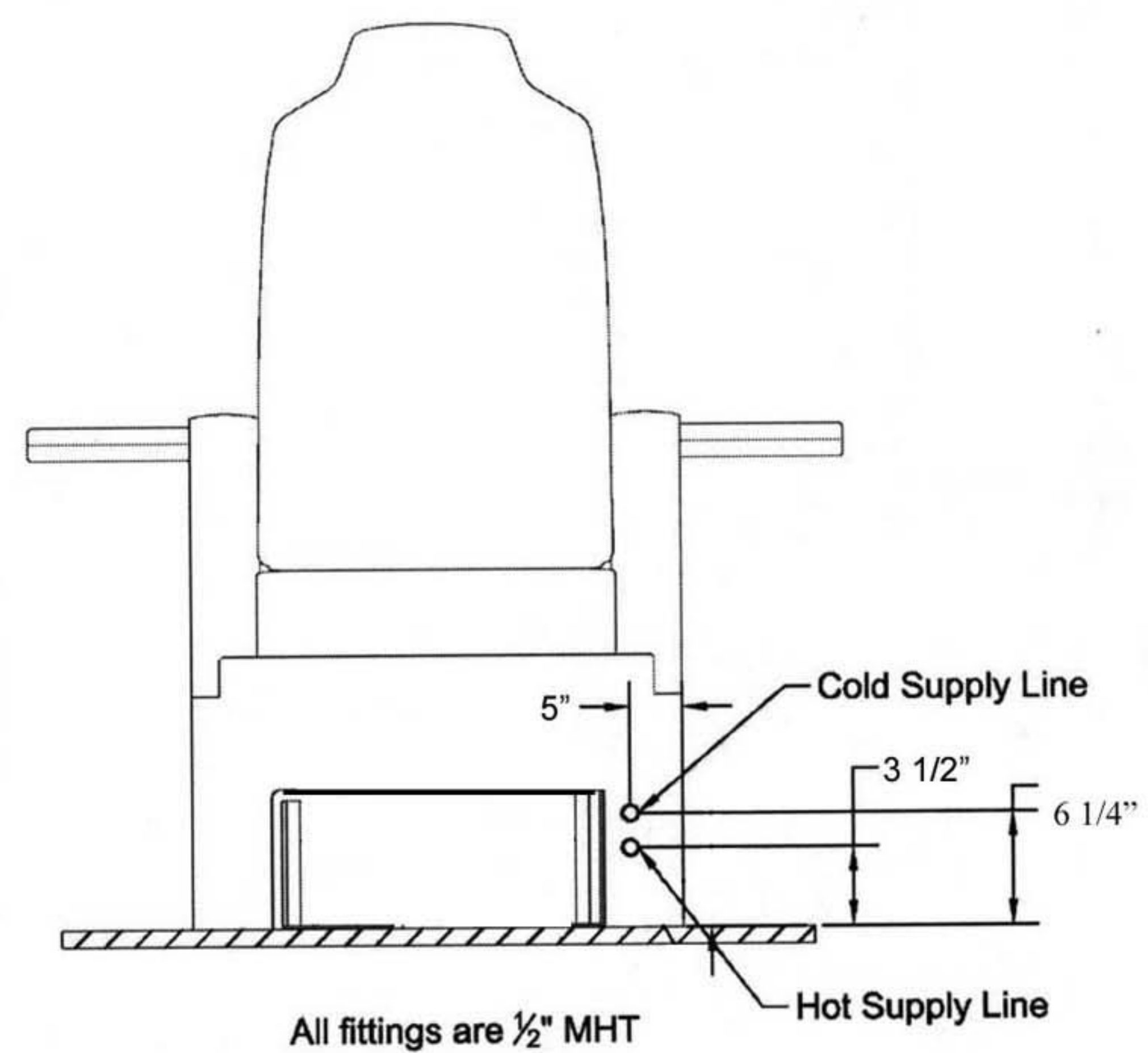


Illustration #2

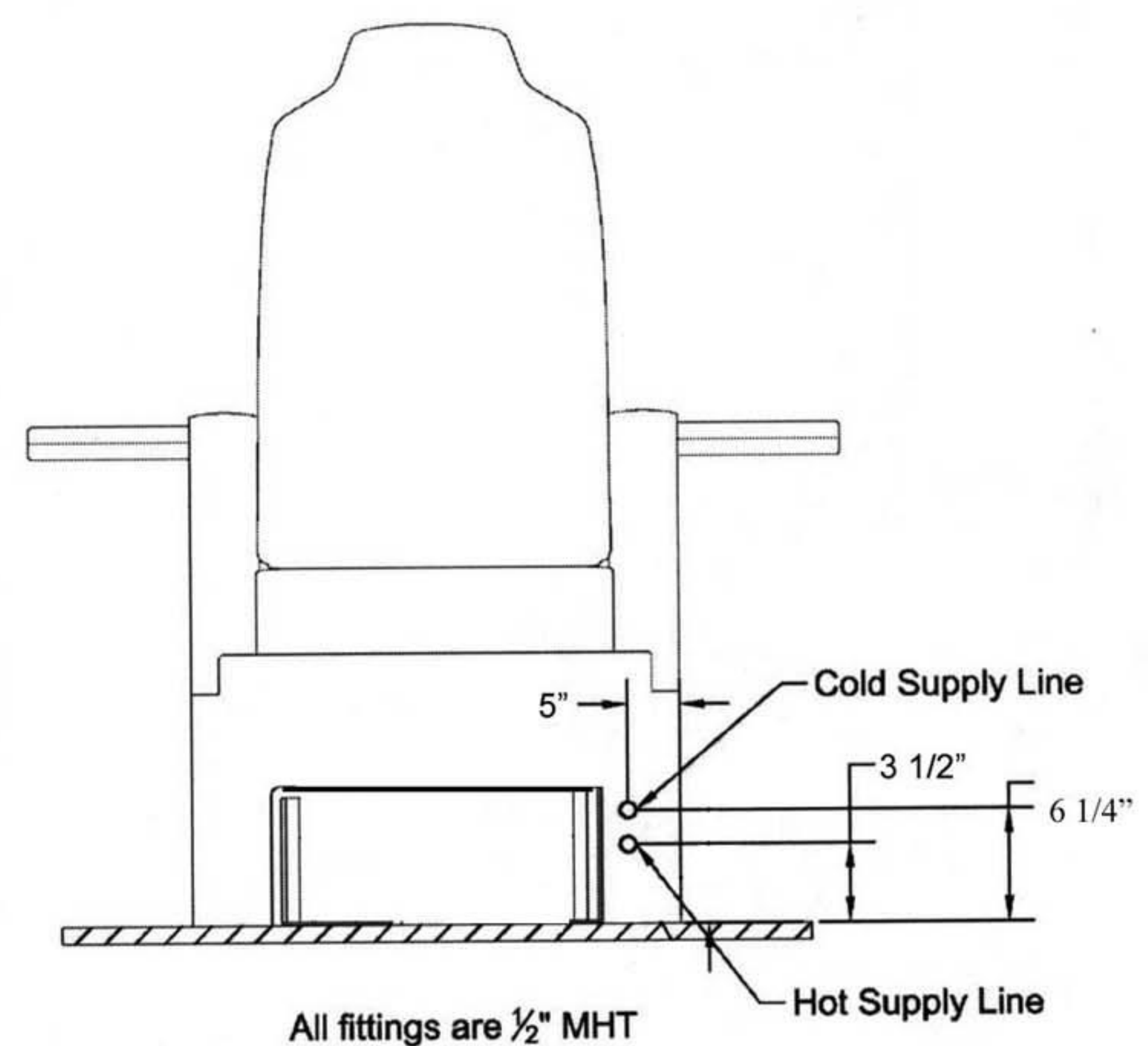
Pro 1000 Base Dimensional



Pro 3000 Base Dimensional

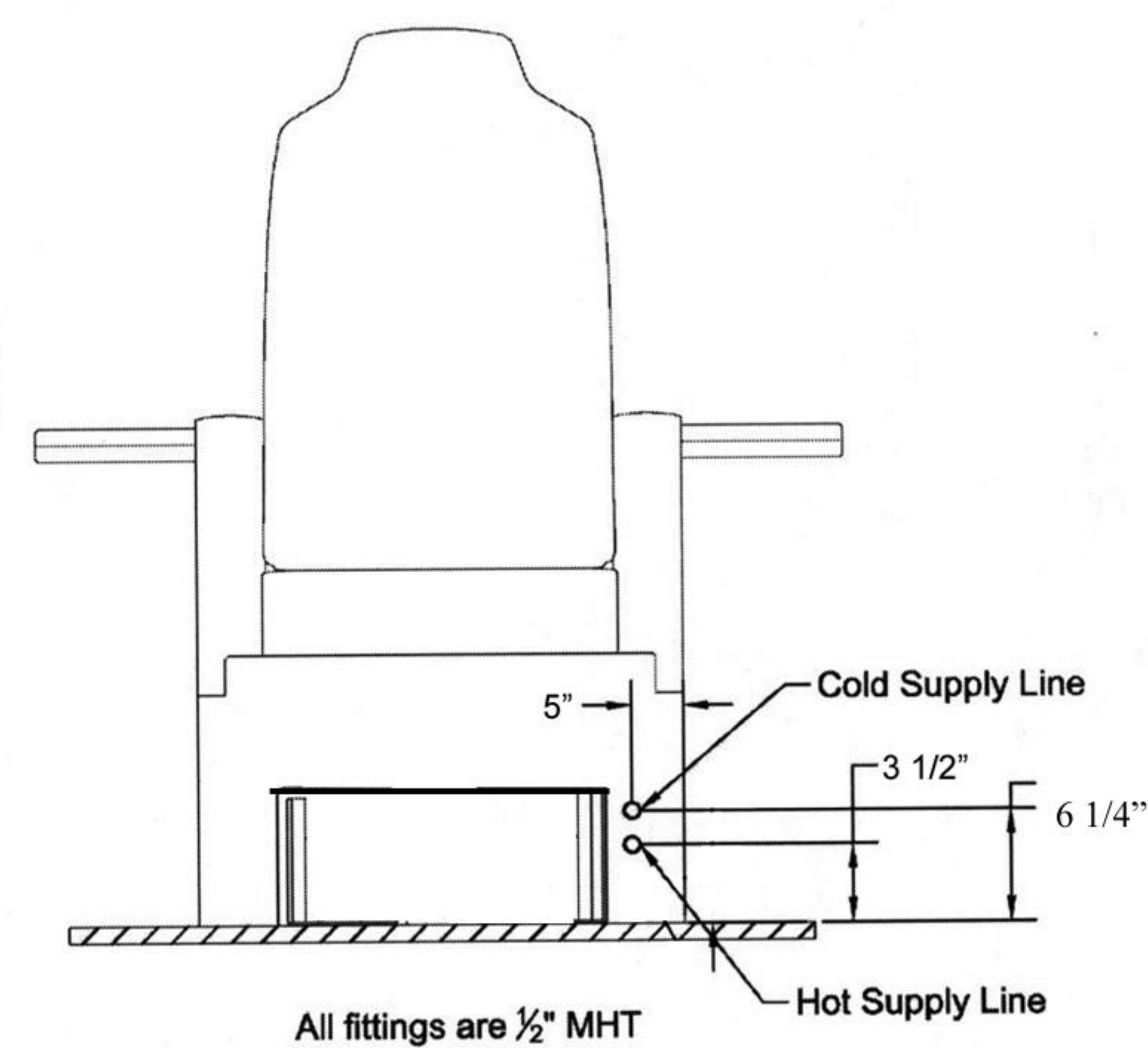
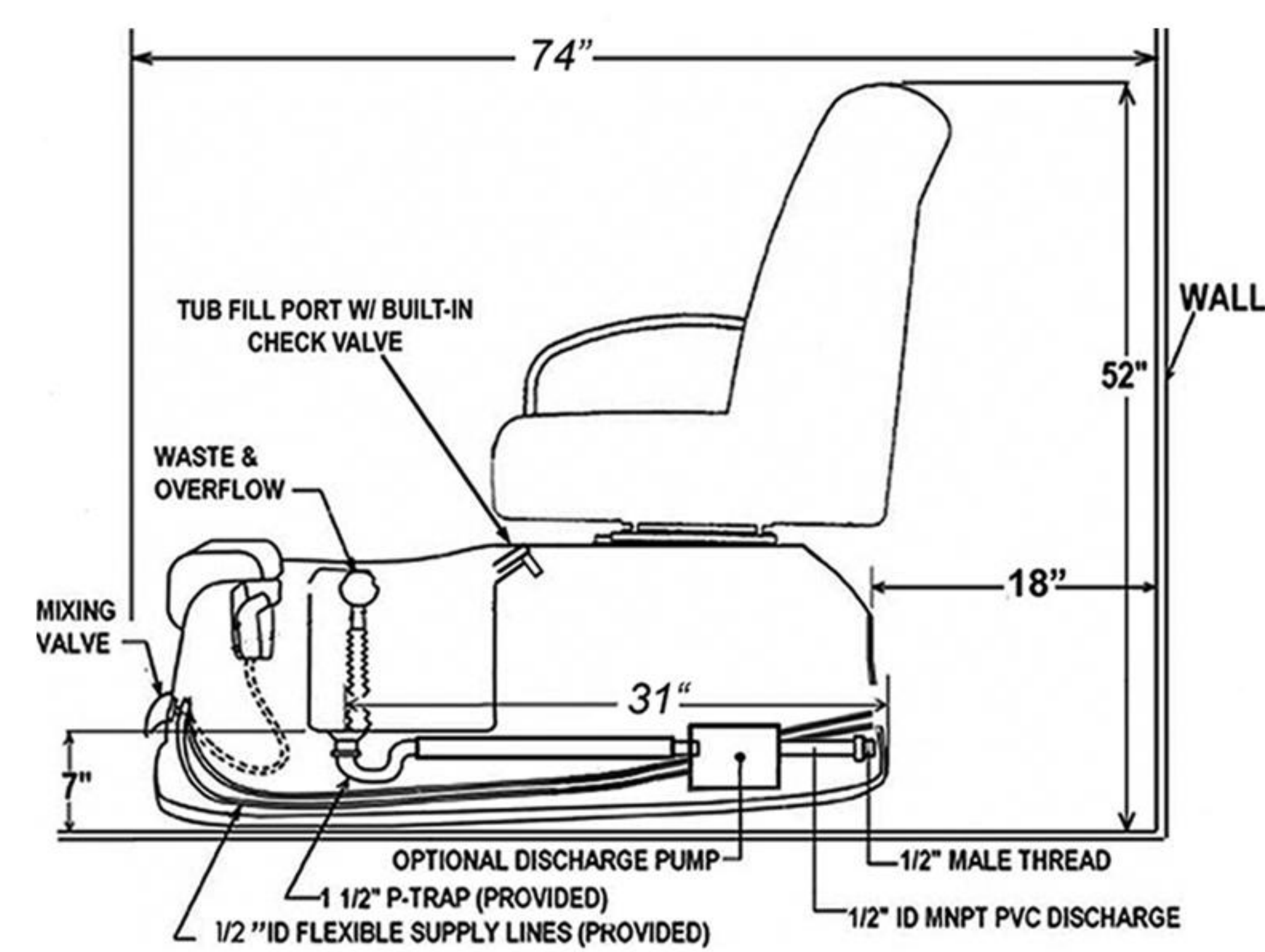


Paris Base Dimensional

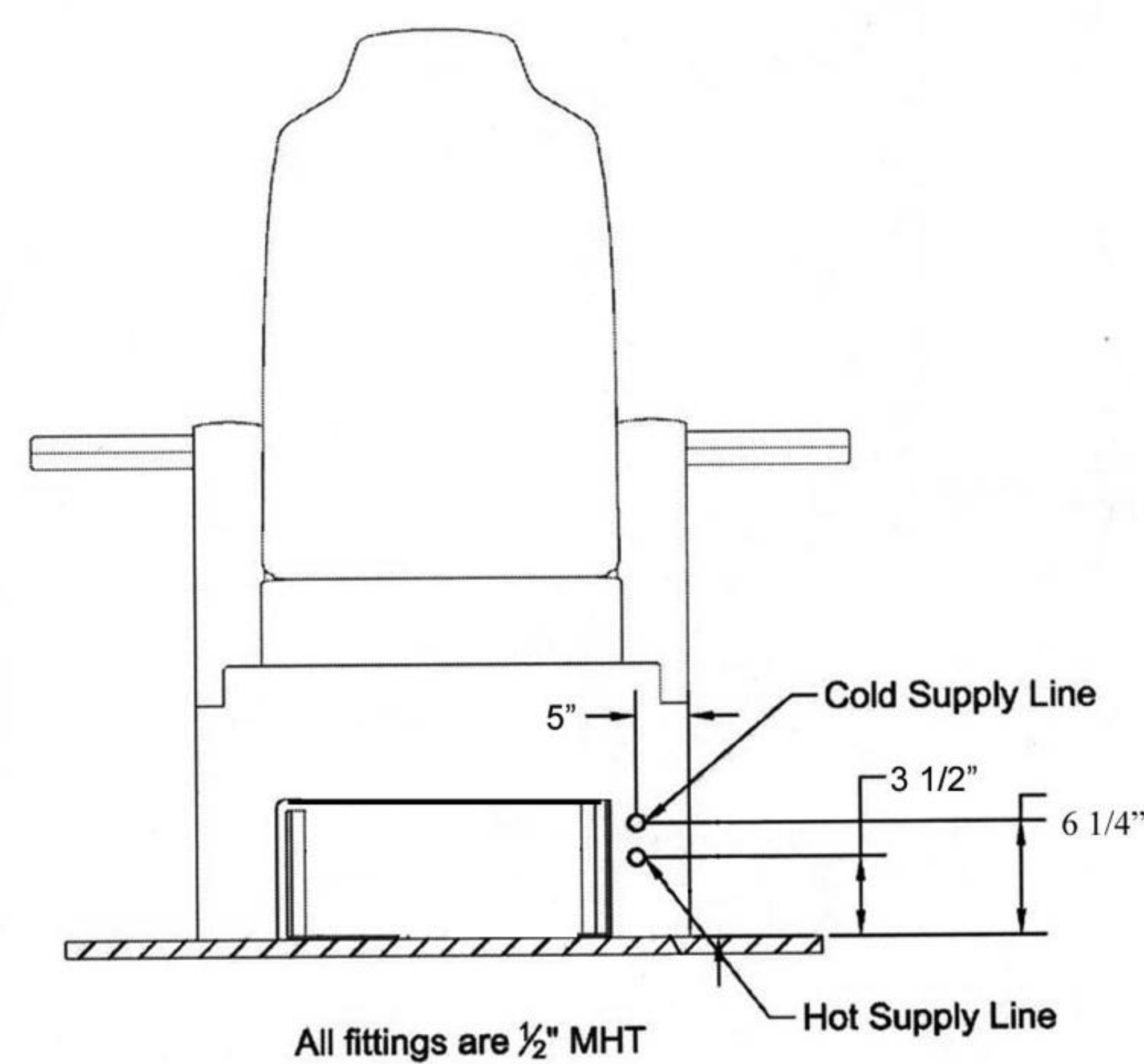
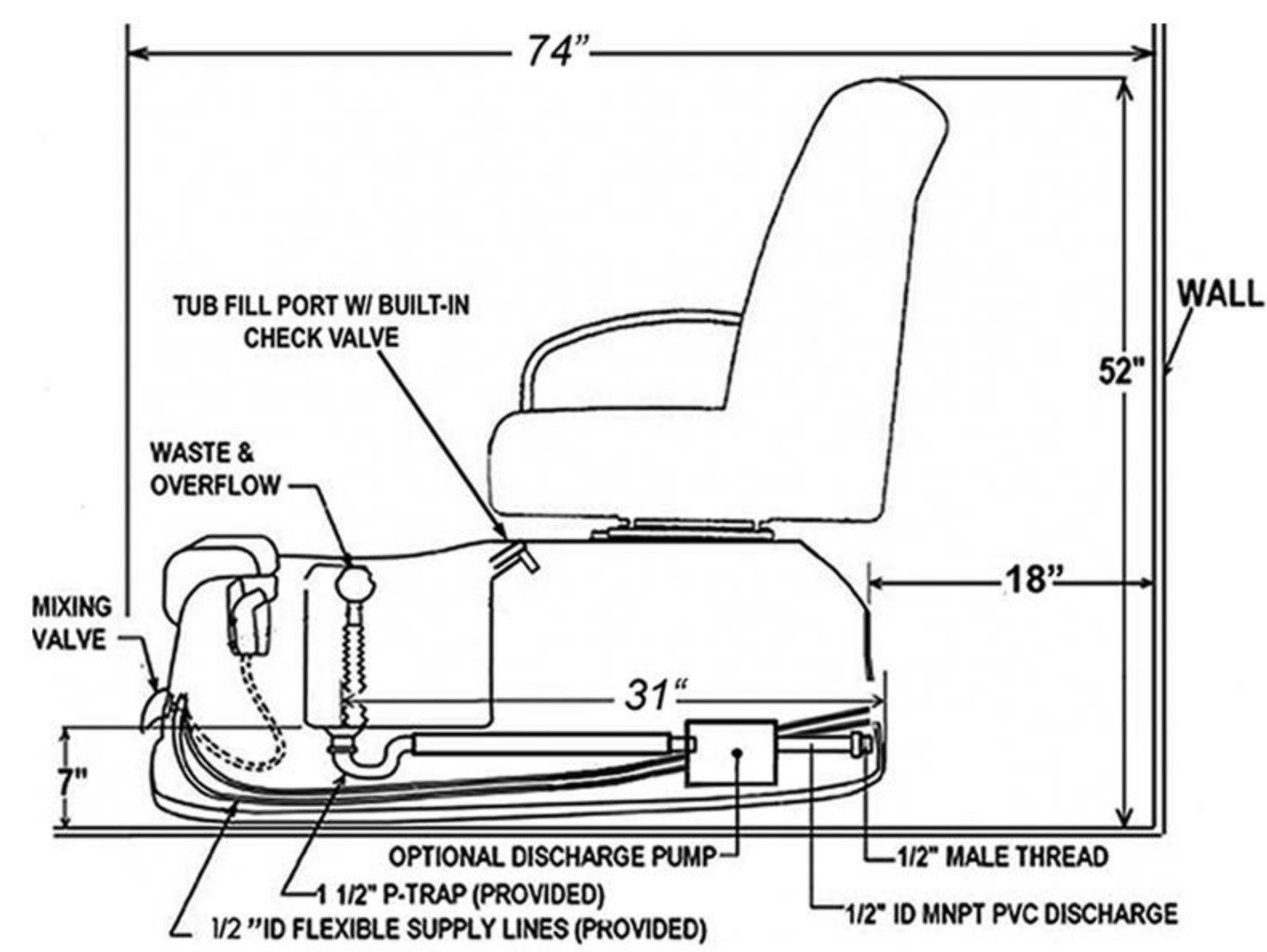


DIMENSIONAL DRAWING

Napoleon Dimensional



Hummer Dimensional



SPECIFICATIONS

The Pro 1000 Specification

Overall dimensions without accessories, seat upright: 56"L x 28 1/2"W x 54"H

Empty weight: 150 lbs

Shipping weight: 200 lbs

Capacity of basin: 5 U.S. Gallons (24.57)

Construction: Gel coating with fiberglass, self-contained, pre-plumbed

Chair Upholstery: 98% vinyl, 2% polyurethane

Pipeless Whirlpool System: 2 patented jets with removable impeller caps, 115V, 60Hz, 2 Amp

The Pro 3000 Specification

Overall dimensions without accessories, seat upright: 55"L x 29"W x 54"H

Empty weight: 150 lbs

Shipping weight: 200 lbs

Capacity of basin: 6.5 U.S. Gallons

Construction: Rcrylic reinforced with fiberglass, self-contained, pre-plumbed

Chair Upholstery: 98% vinyl, 2% polyurethane

Pipeless Whirlpool System: 2 patented jets with removable impeller caps, 115V, 60Hz, 2 Amp

The Napoleon Specification

Overall dimensions without accessories, seat upright: 55"L x 28"W x 52"H

Empty weight: 150 lbs

Shipping weight: 200 lbs

Capacity of basin: 5 U.S. Gallons (24.57)

Construction: Gel coating with fiberglass, self-contained, pre-plumbed

Chair Upholstery: 98% vinyl, 2% polyurethane

Pipeless Whirlpool System: 2 patented jets with removable impeller caps, 115V, 60Hz, 2 Amp

SPECIFICATIONS

The Hummer Specification

Overall dimensions without accessories, seat upright: 56”L x 28 1/2”W x 54”H

Empty weight: 150 lbs

Shipping weight: 200 lbs

Capacity of basin: 5 U.S. Gallons (24.57)

Construction: Gel coating with fiberglass, self-contained, pre-plumbed

Chair Upholstery: 98% vynil, 2% polyurethane

Pipeless Whirlpool System: 2 patented jets with removable impeller caps, 115V, 60Hz, 2 Amp

The Paris Specification

Overall dimensions without accessories, seat upright: 51”L (130cm) x 32”W (81 cm) x 56”H (142cm)

Shipping Dimensions: 55”L (140cm) x 35”W (89cm) x 44”H (112cm)*

Empty weight: 200 lbs

Shipping weight: 210 lbs

Capacity of basin: 5 U.S. Gallons

Construction: Acrylic reinforced with fiberglass, self-contained, pre-plumbed

Chair Upholstery: 98% vynil, 2% polyurethane

Pipeless Whirlpool System: 2 patented jets with removable impeller caps, 115V, 60Hz, 2 Amp

LIMITED WARRANTY

PRO SPA manufactures the Pipeless™ Pedicure Spa with the highest standards for quality materials and workmanship accordingly; PRO SPA expressly warrants their products as follows:

To the **original owner** of the Pipeless™ Pedicure Spa (herein called “pedicure spa”):
PRO SPA may repair or replace, at its option, any pedicure spa found to be defective in material or workmanship upon inspection by an authorized representative of PRO SPA.
This warranty covers the following components for the following time periods:

- . Whirlpool Jets: One (1) year from date of shipment.
- . All other components: One (1) year from date of shipment.
- Labor: For a period of 30 days from the date of purchase, if this product is determined to be defective, PRO SPA INC. will repair the product at no charge.
- Parts: After 30 days from date of purchase, we will ONLY cover and replace parts up to one (1) year from date of purchase. We require the product be return back to our distributor location before we send any replacement out.

The exchange of a pedicure spa is limited to supplying a replacement pedicure spa of comparable style and size. PRO SPA may, at its own discretion, use refurbished parts or pedicure spas for replacement purposes. **Owner must pay all labor and shipping charges necessary to replace or repair the pedicure spa. NO CONSEQUENTIAL, INCIDENTAL, OR CONTINGENT DAMAGES WILL BE ALLOWED WHATSOEVER.** This warranty is null and void if the pedicure spa is removed from its place of initial installation, or is not installed in accordance with federal, state or local codes and ordinances. Furthermore, this warranty does not apply if the pedicure spa has been subject to misapplication, improper installation or maintenance, negligence, improper cleaning or other circumstances beyond PRO SPA's control.

Immediately upon receipt, inspect the entire unit for any obvious damage BEFORE using. Should inspection reveal any damage or defect in the finish, do not use the Pedicure Spa. PRO SPA responsibility for shipping damage ceases upon delivery of the product in good order to the carrier. Refer any claim for damage to the carrier.

NOT COVERED

- 1) Damage to motor parts and/or pump parts due to obstruction in plumbing lines, etc...
- 2) Staining, fading or discoloration of plastic surfaces due to exposure and/or the use of harmful cleaning agents or chemicals.
- 3) Staining, fading or discoloration caused by improper or poor water additives not related to maintenance of proper water are not covered by this warranty.
- 4) Malfunctions or damage caused by improper installation; including not meeting local and state plumbing, electrical and building codes.
- 5) Staining, fading or discoloration of the vinyl seat, armrests or footrest.
- 6) Damage resulting from standing in the basin.
- 7) Unauthorized repairs.
- 8) This warranty does not apply to damage from misuse, neglect, **normal wear and tear**, weathering, loss or damage due to transport of the goods.
- 9) **Berkline** spa chair is not cover under this warranty.