

Shampoo Bowl Installation

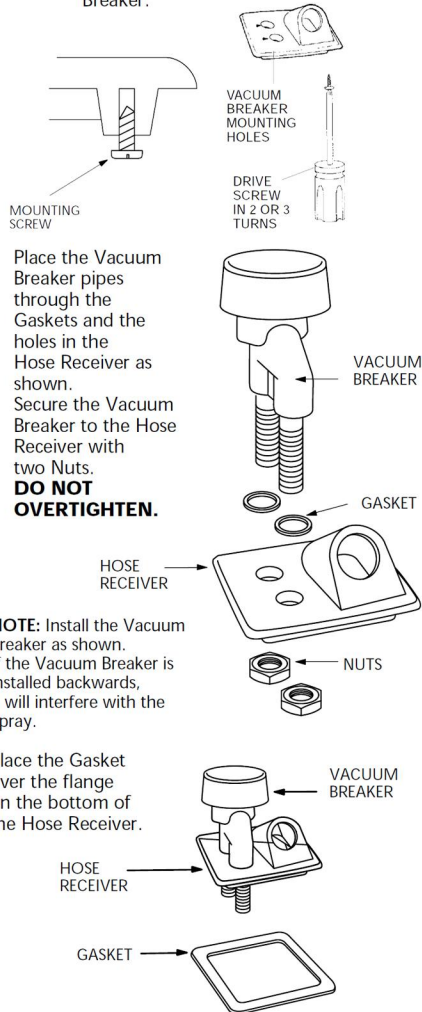
ATTACH HOSE RECEIVER TO BOWL

To make Hose Receiver installation easier, complete these steps to cut screw threads in the mounting holes:

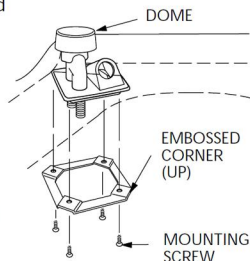
- S Take a Mounting Screw and drive it 2 or 3 turns into one hole.
DO NOT OVERTIGHTEN.
- S Remove the Screw.
- S Repeat for all four (4) mounting holes.

If the Bowl is not equipped with a Vacuum Breaker, proceed to Step 4.

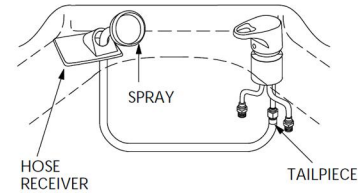
***NOTE:** If you ordered a Vacuum Breaker, your Hose Receiver will have two holes for mounting the Vacuum Breaker.



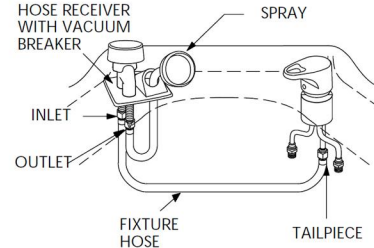
Place the Hose Receiver in the Bowl with the large hole in the dome facing the front of the Bowl. Install the Mounting Bracket on the bottom side of the Bowl with four (4) embossed corners facing upward, against the bottom of the Bowl. Secure with four (4) Screws.
DO NOT OVERTIGHTEN.



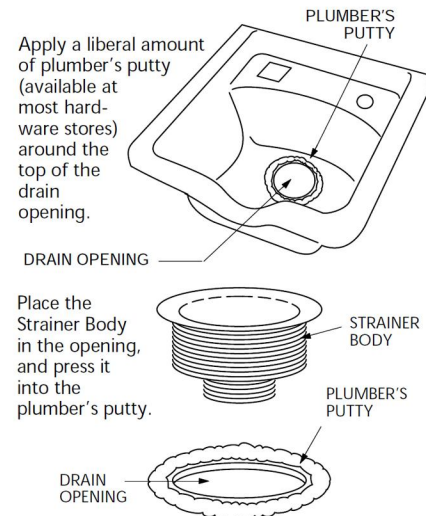
If your Bowl is *not* equipped with a Vacuum Breaker attach the Spray Hose connector to the fixture tailpiece.



If your Bowl is equipped with a Vacuum Breaker, connect one end of the Fixture Hose to the inlet side of the Vacuum Breaker. Connect the other end to the Fixture Tailpiece. Attach the Spray Hose connector to the Vacuum Breaker outlet.



INSTALL THE DRAIN ASSEMBLY

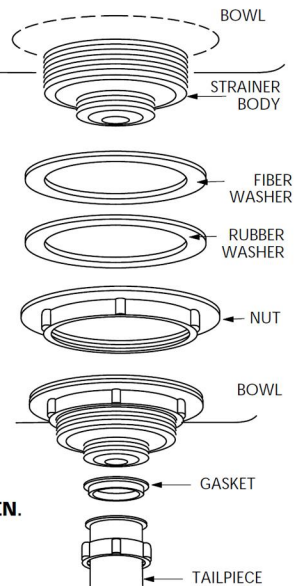


From the underside of the Bowl, place the Fiber and Rubber Washers over the Strainer Body. Secure the Strainer Body with the Nut.

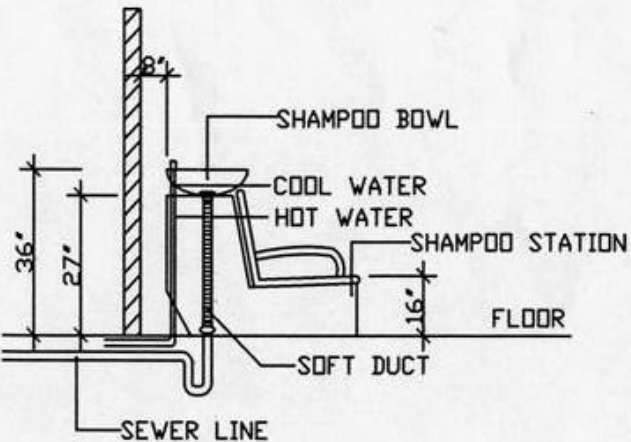
DO NOT OVERTIGHTEN. When the Strainer Body is tightened securely to the Bowl, clean off any excess plumber's putty.

Attach the Gasket and Tailpiece to the Strainer Body.

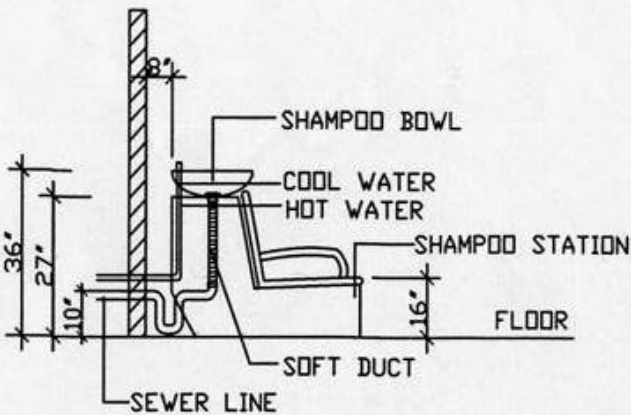
DO NOT OVERTIGHTEN.



Shampoo Unit Installation



SHAMPOO STATION PLUMBING UNDERGROUND MOUNT
(SIDE WASH)



SHAMPOO STATION PLUMBING WALL MOUNT
(SIDE WASH)

Shampoo bowl fixtures installation

